


## Panoramic Mountain Views of the Front Range & Downtown Denver



 Single Family

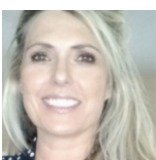
 3091 SQFT

 4 Beds

 4/1 Baths

## PROPERTY DETAILS

VIEWS, Views, views!!! Panoramic Mountain Views from Pikes Peak in Colorado Springs to Longs Peak in Estes Park and the city of Denver!! Huge corner lot in Cul-de-sac at the top of the Whispering Pines Community. Xeriscaped back and side yard for low maintenance and water usage. Enjoy the views in the Open concept Great room, kitchen and Dining room. Stainless Steel appliances, 5 burner gas stove & a touch less faucet in kitchen. Beautiful hard wood floors on main level. Granite counter tops and Storage throughout. Mudroom with large pantry, coat closet, Built in Hall Tree with cubby's and a desk/work space. Up stairs laundry room. Finished Walkout Basement has 2nd washer/dryer hookups and rough ins for wet bar or 2nd kitchen, full 4th bathroom & 4th bedroom plus storage, could be private guest suit. Award winning school district, walking trails, community pool and parks. Easy commute to DTC & Downtown Denver. Relax on the deck while watching the sun set. This Home is a Must See!



**Jamie Dilts**  
720-347-7654  
jamie@stepsre.com

