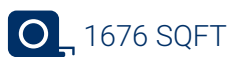




Single Family



1676 SQFT



3 Beds



2 Baths

PROPERTY DETAILS

New, but better!! New price - check it out! Popular Arlington ranch features elegant and spacious 1 level living with model home upgrades. Sellers found the property w/acreage they were dreaming of, so their loss is your gain! Gourmet kitchen, double ovens, walk-in pantry! Stacked stone fireplace. Open floor plan offers master suite plus 2 more bedrooms and an additional full bath. Upgraded lighting, paint details, window coverings and 220 in garage for tools or car charger. Electronic set up includes Safe Haven package in place. All landscaping is done. Would be an easy lock and leave property. Low maintenance living with no HOAs. Great community. This lovely home is a must-see!



Beverly Tompkins
303-523-4343
cloud_nine@q.com



Scan code
for more
property
details





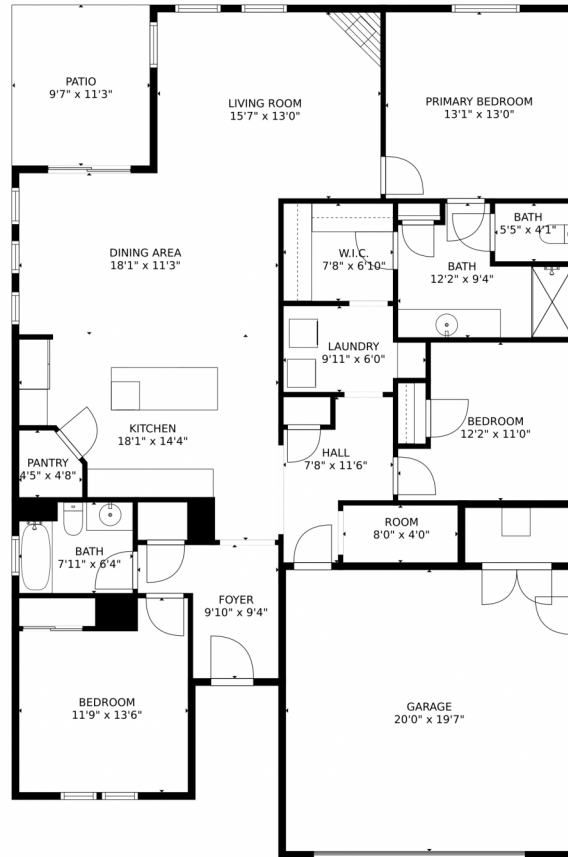
Beverly Tompkins
303-523-4343
cloud_nine@q.com



Scan code
for more
property
details



15644 Syracuse Way, Thornton, CO 80602 – Main Level



GROSS INTERNAL AREA
FLOOR 1: 1605 sq. ft. EXCLUDED AREAS:
GARAGE: 392 sq. ft. PATIO: 108 sq. ft.
TOTAL: 1605 sq. ft.
MEASUREMENTS CALCULATED BY V1Photos.COM ARE DEEMED HIGHLY RELIABLE BUT NOT GUARANTEED.



Disclaimer: Sizes and Dimensions are Approximate, Actual May Vary.



Beverly Tompkins
303-523-4343
cloud_nine@q.com

