




10433 West Peakview Place  
Littleton, CO 80127

MLS # 2994370



 Single Family

 2200 SQFT

 3 Beds

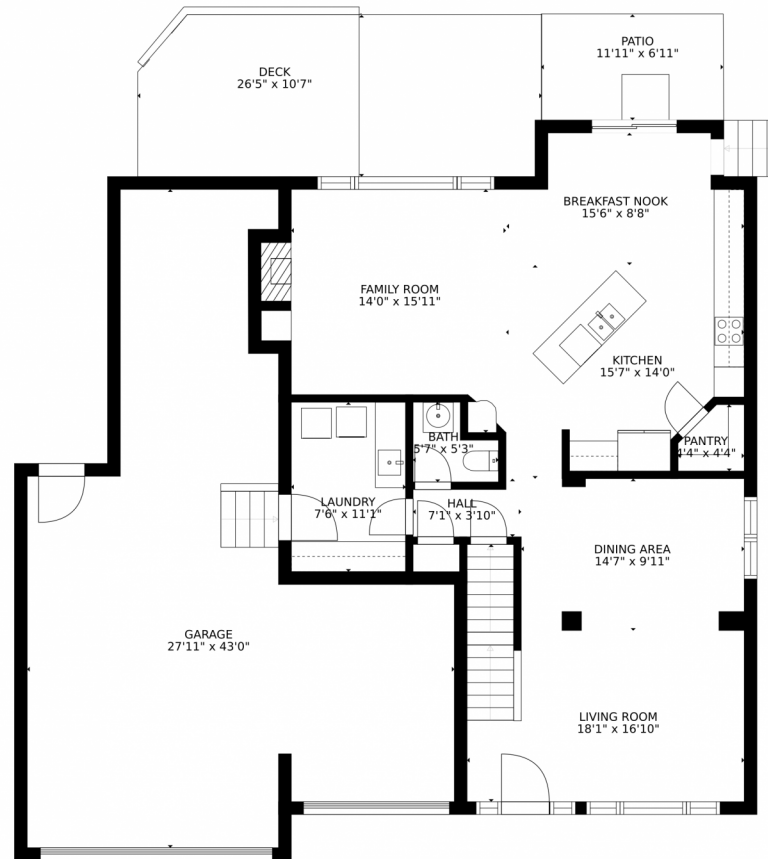
 3 Baths



**Danielle Marcus**  
303-669-7974  
danielle@themarcusteam.com  
<https://www.themarcusteam.com>



# 10433 West Peakview Place, Littleton, CO 80127 – Main Level



### Estimated areas

GLA FLOOR 1: 0 sq. ft, excluded 1072 sq. ft.  
GLA FLOOR 2: 1191 sq. ft, excluded 1171 sq. ft.  
GLA FLOOR 3: 1092 sq. ft, excluded 109 sq. ft.  
Total GLA 2283 sq. ft, total scanned area 4635 sq. ft.

SIZES AND DIMENSIONS ARE APPROXIMATE, ACTUAL MAY VARY.



Disclaimer: Sizes and Dimensions are Approximate, Actual May Vary.



**Danielle Marcus**

303-669-7974

[danielle@themarkusteam.com](mailto:danielle@themarkusteam.com)

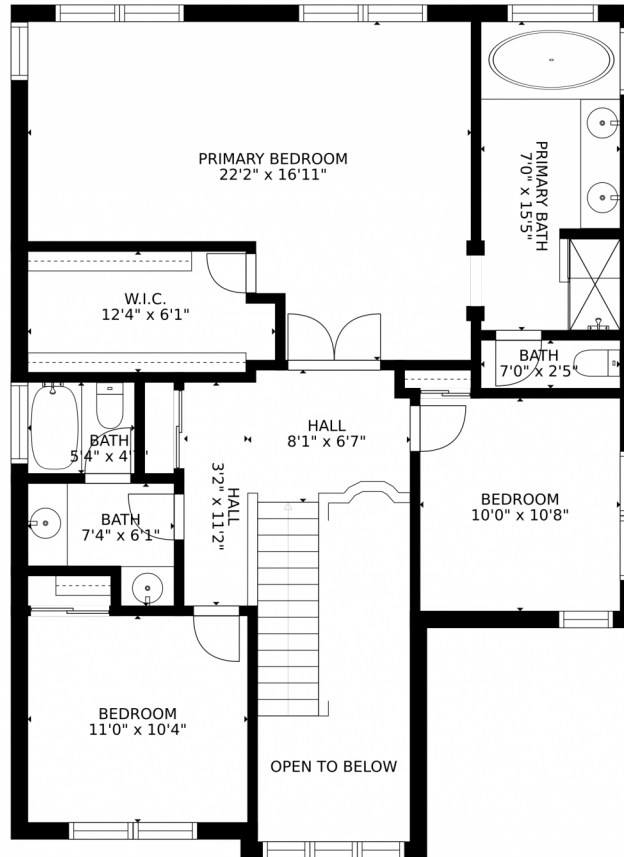
<https://www.themarkusteam.com>



Scan code  
for more  
property  
details



10433 West Peakview Place, Littleton, CO 80127 – Second Level



Estimated areas

GLA FLOOR 1: 0 sq. ft., excluded 1072 sq. ft.  
GLA FLOOR 2: 1191 sq. ft., excluded 1171 sq. ft.  
GLA FLOOR 3: 1092 sq. ft., excluded 109 sq. ft.  
Total GLA 2283 sq. ft., total scanned area 4635 sq. ft.

SIZES AND DIMENSIONS ARE APPROXIMATE, ACTUAL MAY VARY.



Disclaimer: Sizes and Dimensions are Approximate, Actual May Vary.



Danielle Marcus

303-669-7974

danielle@themarkusteam.com

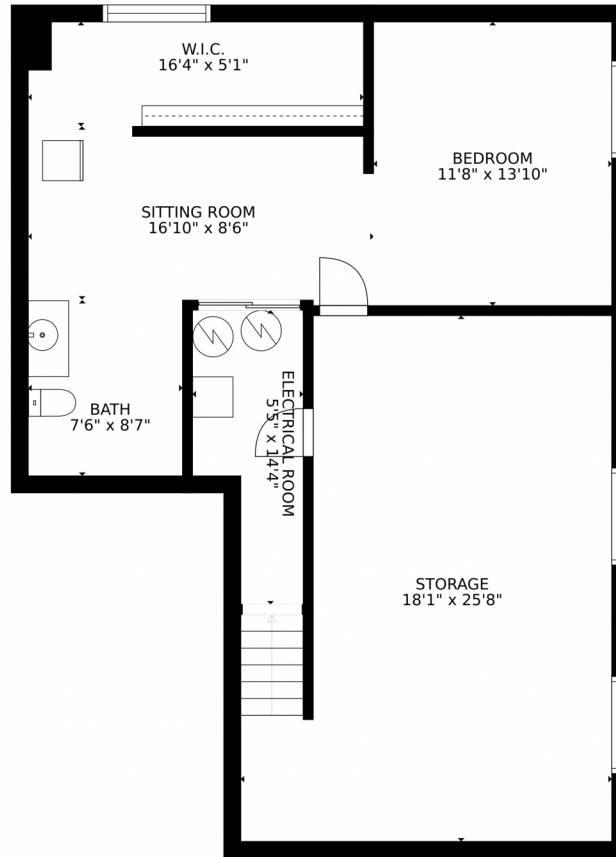
<https://www.themarkusteam.com>



Scan code  
for more  
property  
details



# 10433 West Peakview Place, Littleton, CO 80127 – Lower Level



### Estimated areas

GLA FLOOR 1: 0 sq. ft, excluded 1072 sq. ft.  
GLA FLOOR 2: 1191 sq. ft, excluded 1171 sq. ft.  
GLA FLOOR 3: 1092 sq. ft, excluded 109 sq. ft.  
Total GLA 2283 sq. ft, total scanned area 4635 sq. ft.

SIZES AND DIMENSIONS ARE APPROXIMATE, ACTUAL MAY VARY.



Disclaimer: Sizes and Dimensions are Approximate, Actual May Vary.



**Danielle Marcus**

303-669-7974

[danielle@themarkusteam.com](mailto:danielle@themarkusteam.com)

<https://www.themarkusteam.com>



Scan code  
for more  
property  
details



# 10433 West Peakview Place, Littleton, CO 80127 – All Levels



### Estimated areas

GLA FLOOR 1: 0 sq. ft, excluded 1072 sq. ft.  
GLA FLOOR 2: 1191 sq. ft, excluded 1171 sq. ft.  
GLA FLOOR 3: 1092 sq. ft, excluded 109 sq. ft.  
Total GLA 2283 sq. ft, total scanned area 4635 sq. ft.

SIZES AND DIMENSIONS ARE APPROXIMATE, ACTUAL MAY VARY.



Disclaimer: Sizes and Dimensions are Approximate, Actual May Vary.



**Danielle Marcus**

303-669-7974

danielle@themarkusteam.com

<https://www.themarkusteam.com>



Scan code  
for more  
property  
details

