

 Single Family
  2209 SQFT
  3 Beds
  1 Baths
  2 Car
  0.13 Acre

## PROPERTY DETAILS

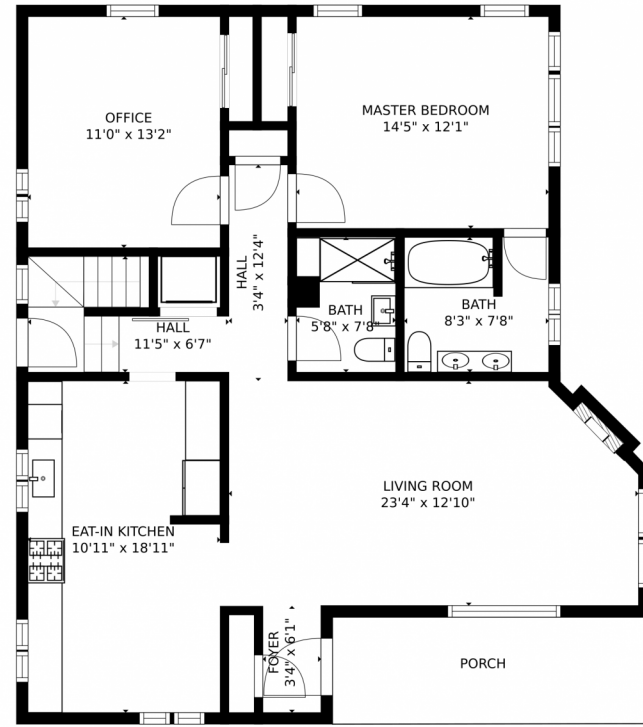
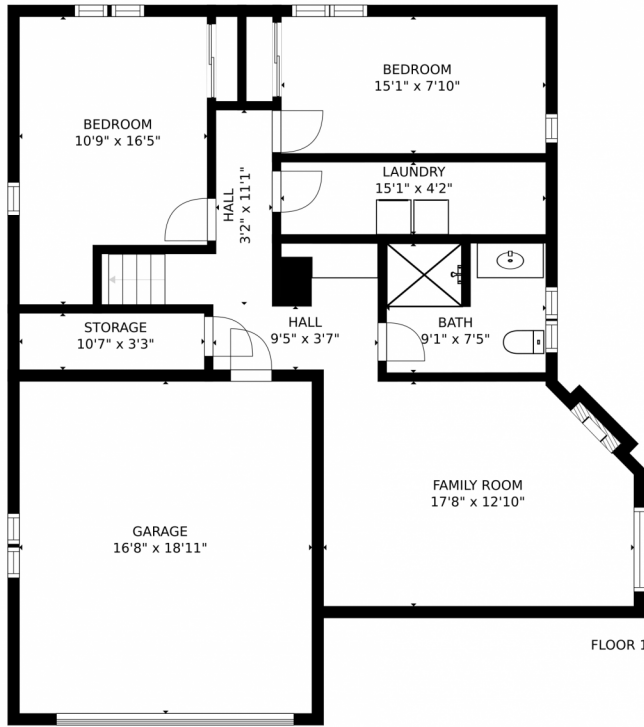
Perched on a hill providing unmatched views of the entire front range, from Pikes Peak to Longs Peak, including the Denver Cityscape. Awe inspiring views are only the beginning in this completely re-imagined home. As you approach notice the completely overhauled front yard is carefree with drip and full sprinkler systems. Stroll in the front door and notice the attention to detail melding the old with the new, original door hardware, trim, and arched doorways are timeless to this contemporary farmhouse. Two large family rooms, each with their own gas fireplace offer roomy yet cozy gathering spaces. The enormous and expanded eat in kitchen will quickly become the favorite room in the house featuring solid wood cabinetry, marble countertops, Frigidaire professional SS appliance package, live edge shelving, and exposed brick. The sun-drenched master suite offers a huge bathroom with a dual vanity and its own storage. Incredible office, or, add a wardrobe and turn it into a bedroom, large ¾ bath and an upstairs laundry round out the main floor. The lower level offers a 2nd Laundry room, the 2nd family room with a gas fireplace, two spacious bedrooms and ¾ bath, along with the garage. Everything is new, electrical, HVAC, plumbing, windows, landscaping, driveway, roof, retaining walls and flow. This home provides the lifestyle that you dream of, fantastic outdoor space with views, wonderful layout and a stone's throw to downtown, fantastic dining, transportation culture and recreation. Sod is being installed 5/14-5/15!



**Brad Colburn**  
 303-618-0109  
 brad@madisonprops.com  
<http://www.runbuysell.com>



# 2650 N Steele Street, Denver, CO 80205 – All Levels



SIZES AND DIMENSIONS ARE APPROXIMATE, ACTUAL MAY VARY.

Disclaimer: Sizes and Dimensions are Approximate, Actual May Vary.

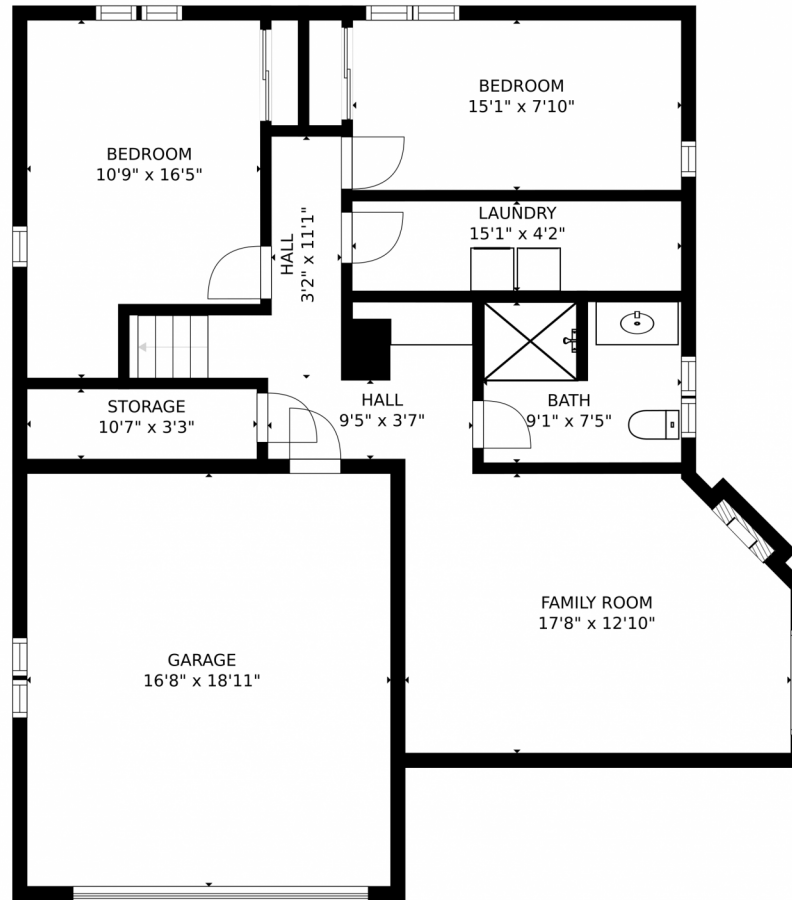


**Brad Colburn**  
303-618-0109  
brad@madisonprops.com  
<http://www.runbuysell.com>



Scan code  
for more  
property  
details

2650 N Steele Street, Denver, CO 80205 – Basement



SIZES AND DIMENSIONS ARE APPROXIMATE, ACTUAL MAY VARY.

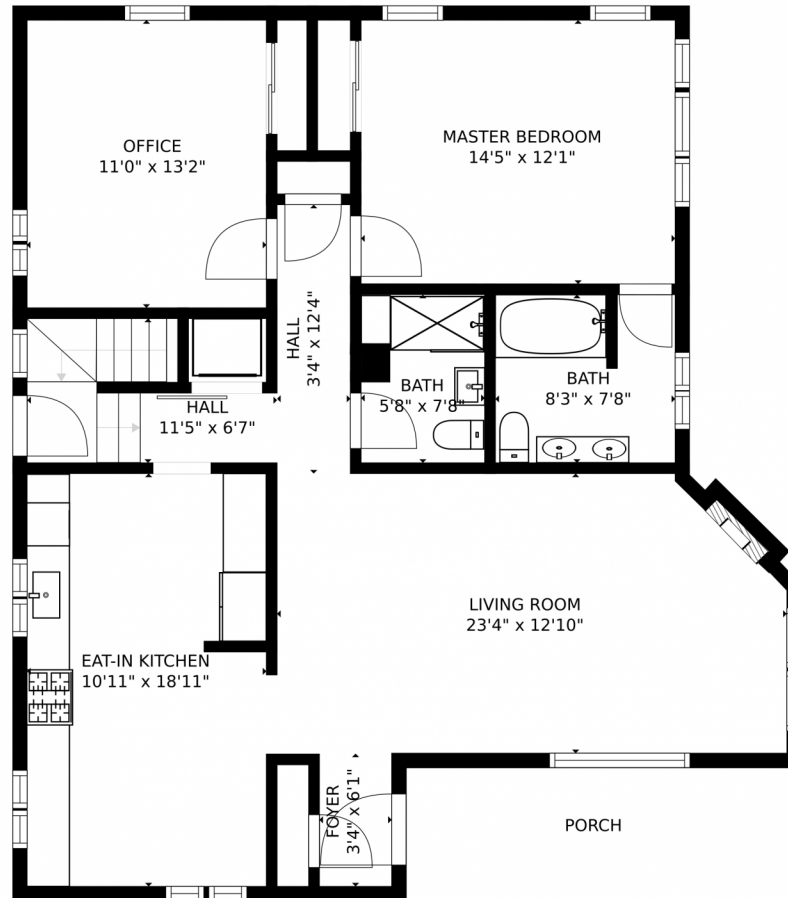
Disclaimer: Sizes and Dimensions are Approximate, Actual May Vary.



**Brad Colburn**  
303-618-0109  
brad@madisonprops.com  
<http://www.runbuysell.com>



2650 N Steele Street, Denver, CO 80205 – Main Level



SIZES AND DIMENSIONS ARE APPROXIMATE, ACTUAL MAY VARY.

Disclaimer: Sizes and Dimensions are Approximate, Actual May Vary.



**Brad Colburn**  
303-618-0109  
brad@madisonprops.com  
<http://www.runbuysell.com>

