



Townhouse



3914 SQFT



3 Beds



3/1 Baths



2 Car

PROPERTY DETAILS

In the heart of Cherry Creek North, this stunning home has been tastefully reimagined, melding old world charm with today's modern feel and conveniences. The moment you walk through the door, you'll feel the serenity of being home. Beauty abounds from the step-down living room and fireplace, the bay window floods the dining room with sunshine, fully updated kitchen flows directly into the family room. Dine 2 blocks away at Cucina Calore or the new Le Bilboquet, alternatively, cook at home and enjoy the evening on your private patio. 2 ovens, honed granite counters, glass front cabinets and a huge island this is bound to become your favorite room in the house. The upgraded master bath is a haven from the day. Draw a bath in the huge soaking tub, dual-head shower, dual sinks, and separate vanity allow plenty of space to wind down. Another en-suite bedroom and laundry complete upstairs. The basement has endless possibilities, rec space makes a great theater, office, or play-room. An additional bedroom, ¾ bath and flex space could be used for a home gym, art studio or craft room. Huge attached 2 car garage. Come take a look at the lifestyle provided by this home in the middle of all Cherry Creek North as to offer.



Brad Colburn

303-618-0109

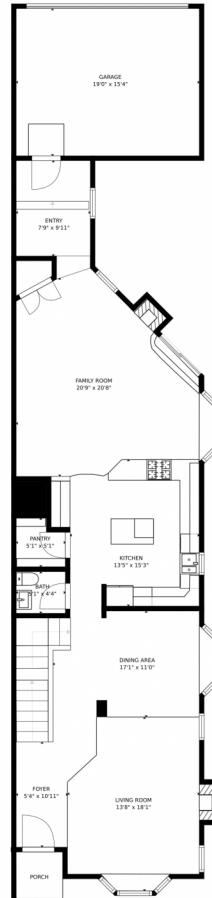
brad@madisonprops.com

<http://www.runbuysell.com>

Scan code
for more
property
details



356 Steele Street, Denver, CO 80206 – Main Level



SIZES AND DIMENSIONS ARE APPROXIMATE, ACTUAL MAY VARY.

Disclaimer: Sizes and Dimensions are Approximate, Actual May Vary.



Brad Colburn
303-618-0109
brad@madisonprops.com
<http://www.runbuysell.com>



Scan code
for more
property
details



SIZES AND DIMENSIONS ARE APPROXIMATE, ACTUAL MAY VARY.

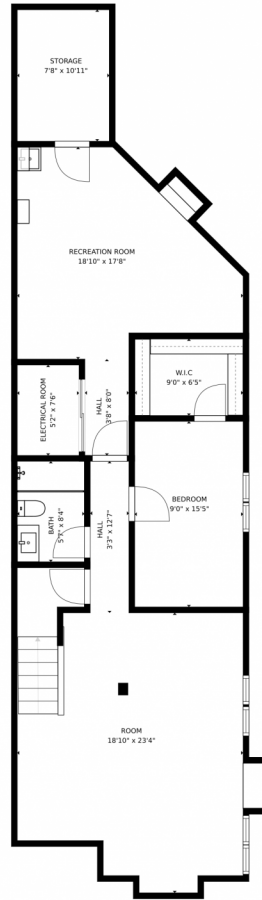
Disclaimer: Sizes and Dimensions are Approximate, Actual May Vary.



Brad Colburn
303-618-0109
brad@madisonprops.com
<http://www.runbuysell.com>



356 Steele Street, Denver, CO 80206 – Basement



SIZES AND DIMENSIONS ARE APPROXIMATE, ACTUAL MAY VARY.

Disclaimer: Sizes and Dimensions are Approximate, Actual May Vary.



Brad Colburn
303-618-0109
brad@madisonprops.com
<http://www.runbuysell.com>



356 Steele Street, Denver, CO 80206 – All Floors



SIZES AND DIMENSIONS ARE APPROXIMATE, ACTUAL MAY VARY.

Disclaimer: Sizes and Dimensions are Approximate, Actual May Vary.



Brad Colburn
303-618-0109
brad@madisonprops.com
<http://www.runbuysell.com>



Scan code
for more
property
details