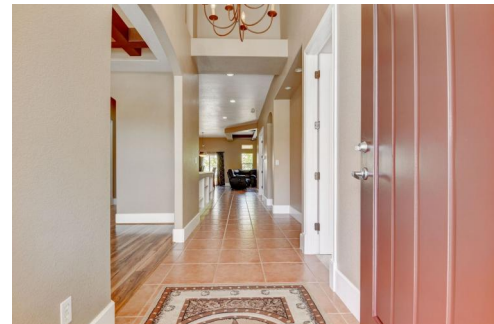




343 Mesa Street
 Brighton, CO 80601
COMMUNITY: Pheasant Ridge

MLS # 4638132
PRICE \$466,000

Rare Pheasant Ridge Custom former show RANCH home!



Single Family 2214 SQFT 4 Beds 2 Baths 3 Car 0.16 Acre

PROPERTY DETAILS

A former show-home, this is one of a very few incredible custom built homes in this prestigious neighborhood, with many special features. Open and spacious floor plan. Spectacular open custom kitchen with large island and eating space, with tons of high-end cabinets, upgraded appliances, including gas range and double oven. Huge basement with large finished bedroom/walk-in closet. Oversized tandem garage with extra high ceiling and side entry. Excellent location, near parks, schools, community college, shopping, downtown Brighton, and easy access via I-76, Hwy. 85 and I-25.



Ron Thorne
 303-880-8984
 ron@thornehomes.com
<http://www.viewdenverhomesforsale.com>

Scan code for more property details

