



10255 Deerfield Street
Firestone, CO 80504



Single Family



4355 SQFT



4 Beds



3/1 Baths



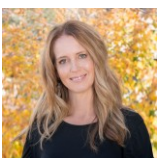
3 Car



0.21 Acre

PROPERTY DETAILS

Stunning Custom Home w/ ALL the upgrades & epic Mountain views! You MUST see this house to appreciate all the details. Open floor plan w/ soaring ceilings, custom lighting & fresh paint. Custom kitchen w/ granite counters, S/S & custom hood, cute pantry, eat in dining & large dining room. HUGE family room opens to inviting covered deck overlooking Harney Park & mountain views. Main floor master w/ attached 5 pc. bath, walk in closet. Upstairs features new carpet, 3 bedrooms, HUGE Rec room, updated baths. Unfinished walkout basement offers tons of storage, flex space & future expansion. Opens to large patio, zeroscape yard, & built in gas lines for fire pit and BBQ. Large Landry room & 1/2 bath on main. 3 car attached garage completely dry-walled, finished & epoxy floor, dream garage. Close to trails, backs to park with Food and Flick nights, Amazing views of Fireworks from your patio and more. This house is everyone's dream home move in ready.



Terri Ellerington

303-929-8116

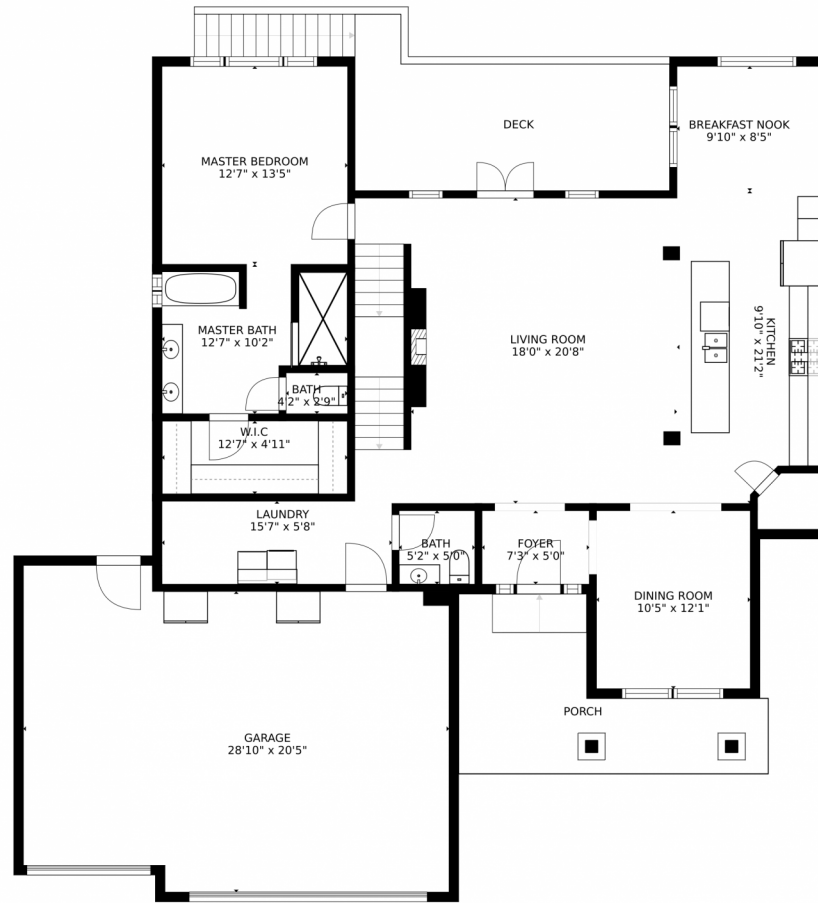
terri@elevated-team.com

<https://www.remax.com/real-estate-agents/terri-ellerington-louisville-co/10205130>

Scan code
for more
property
details



10255 Deerfield Street, Firestone, CO 80504 – Main Floor



SIZES AND DIMENSIONS ARE APPROXIMATE, ACTUAL MAY VARY.

Disclaimer: Sizes and Dimensions are Approximate, Actual May Vary.



Terri Ellerington

303-929-8116

terri@elevated-team.com

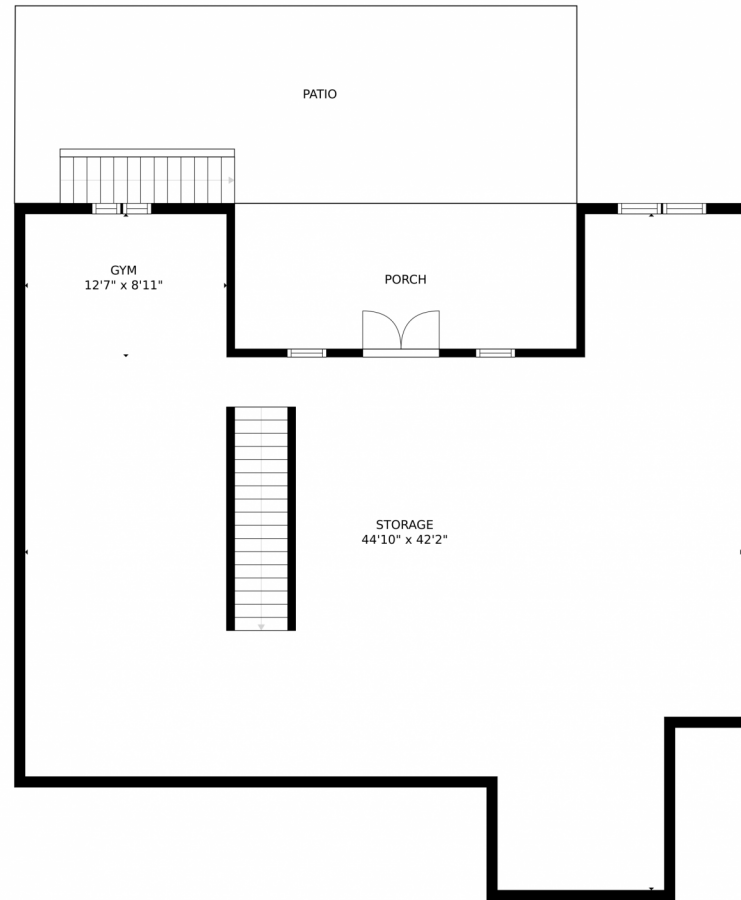
<https://www.remax.com/real-estate-agents/terri-ellerington-louisville-co/102051301>



Scan code
for more
property
details



10255 Deerfield Street, Firestone, CO 80504 – Lower Level



SIZES AND DIMENSIONS ARE APPROXIMATE, ACTUAL MAY VARY.

Disclaimer: Sizes and Dimensions are Approximate, Actual May Vary.



Terri Ellerington

303-929-8116

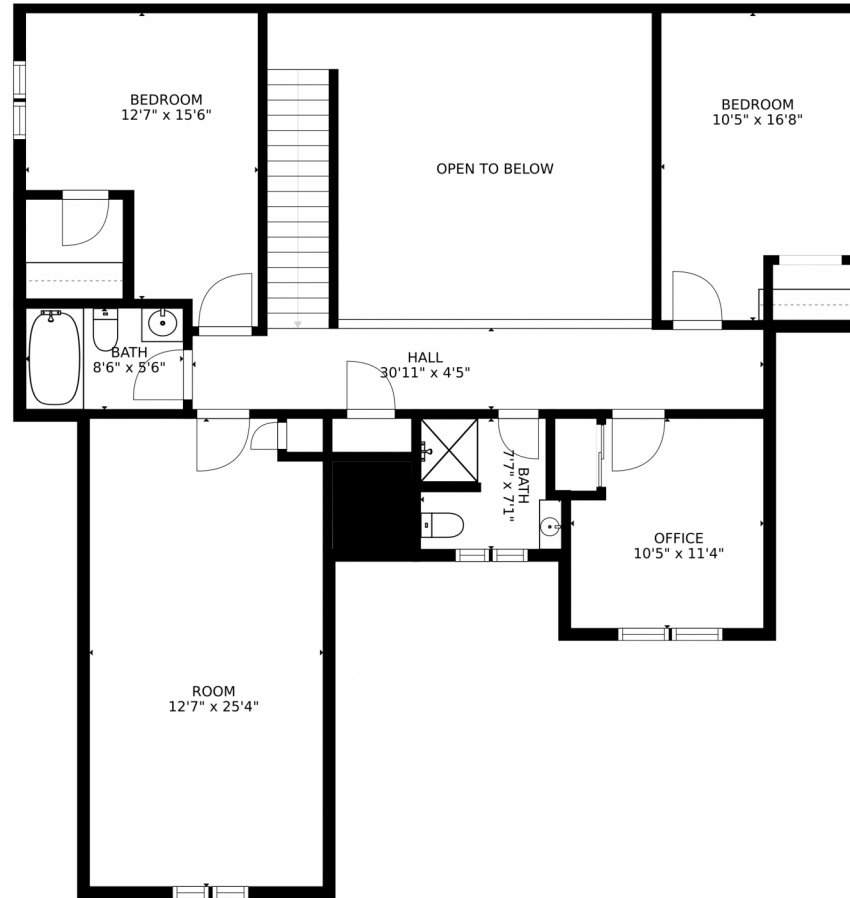
terri@elevated-team.com

<https://www.remax.com/real-estate-agents/terri-ellerington-louisville-co/102051301>



Scan code
for more
property
details

10255 Deerfield Street, Firestone, CO 80504 – 2nd Floor



SIZES AND DIMENSIONS ARE APPROXIMATE, ACTUAL MAY VARY.

Disclaimer: Sizes and Dimensions are Approximate, Actual May Vary.



Terri Ellerington

303-929-8116

terri@elevated-team.com

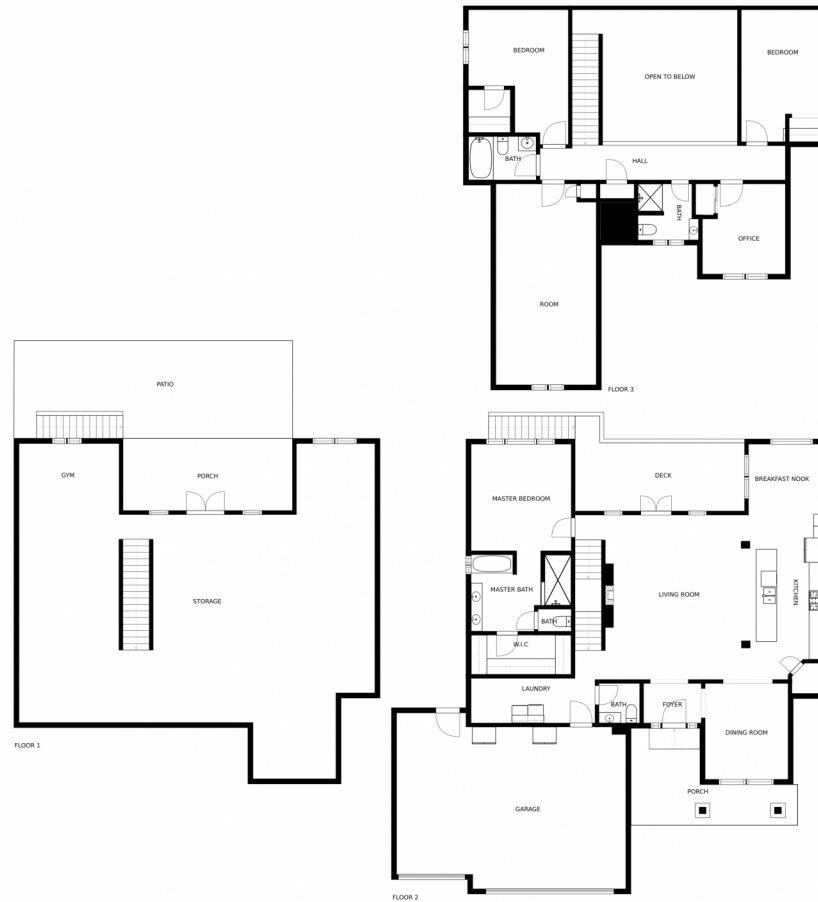
<https://www.remax.com/real-estate-agents/terri-ellerington-louisville-co/102051301>



Scan code
for more
property
details



10255 Deerfield Street, Firestone, CO 80504 – All Floors



SIZES AND DIMENSIONS ARE APPROXIMATE, ACTUAL MAY VARY.

Disclaimer: Sizes and Dimensions are Approximate, Actual May Vary.



Terri Ellerington
303-929-8116
terri@elevated-team.com
<https://www.remax.com/real-estate-agents/terri-ellerington-louisville-co/102051301>



Scan code
for more
property
details