



Townhouse



1472 SQFT



2 Beds



2/1 Baths



1 Car



0.02 Acre

## PROPERTY DETAILS

Why wait for new construction when you can move right into this absolutely perfect end-unit Townhome, which is centrally located in Dublin Terrace. As you enter the home you will be taken aback when you see the spacious living room with a large front window combined with recessed lighting with emphasis on the 14' vaulted ceilings! The living room area leads down to the mudroom and one car attached garage with an additional parking space and bonus built in storage storage space that takes up almost the whole length of the home - fully insulated with a concrete floor. Head upstairs to the second floor to the kitchen any chef would love to create meals in with granite countertops, add bar stools or not with modern cabinets, stainless steel appliances and gas stove, pantry and spacious dining room, with a large window this is truly the heart of the home! A half bath ideal which is ideal for guests and then just off of the kitchen and through the sliding glass door is the private patio with amazing views, large enough for a BBQ, fire pit and chairs, just imagine entertaining here! The upper level features a huge master bedroom with a walk-in closet and an attached en-suite with a walk-in shower and double vanities! Bedroom #2 is also on this level boasting 2 large closets and a large window and there is also a full bathroom! The Laundry is also conveniently located on the upper level! This gorgeous Townhome is better than new and conveniently located just off Powers corridor with



**Tonie Benetti**

303-210-7336

tonie@tbkrealstate.com

<https://www.tbkrealstate.com>

Scan code  
for more  
property  
details



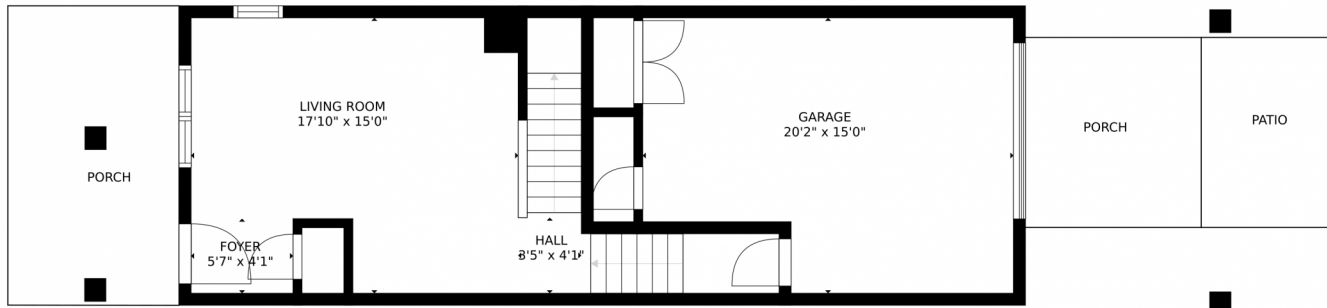
plenty of restaurants and ample shopping to enjoy! Check it out and do not miss this amazing opportunity. All information deemed reliable Buyer and Agent to verify. MOVE IN READY COULD BE A PERFECT FIRST HOME OR AN EXCELLENT RENTAL HOME IS IN PRISTINE CONDITION! DO NOT MISS OUT ON THIS OPPORTUNITY!



**Tonie Benetti**  
303-210-7336  
tonie@tbkrealstate.com  
<https://www.tbkrealstate.com>



6575 Pennywhistle Point, Colorado Springs, CO 80923 – Main



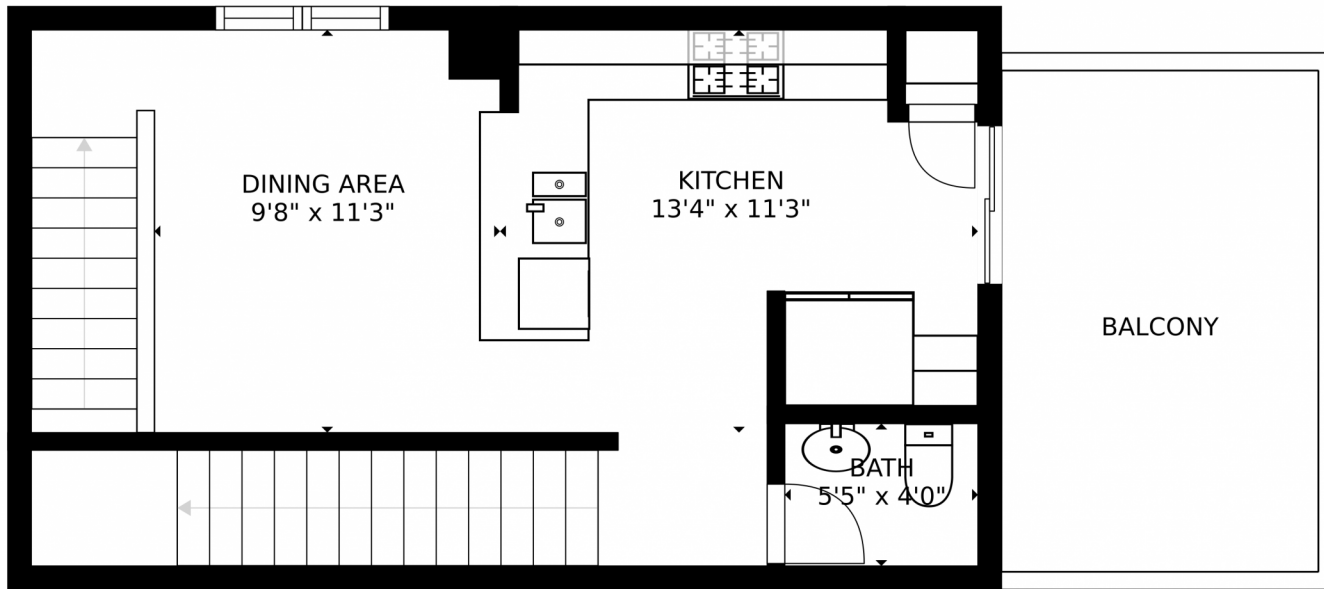
SIZES AND DIMENSIONS ARE APPROXIMATE, ACTUAL MAY VARY.

Disclaimer: Sizes and Dimensions are Approximate, Actual May Vary.



**Tonie Benetti**  
303-210-7336  
tonie@tbkrealstate.com  
<https://www.tbkrealstate.com>





SIZES AND DIMENSIONS ARE APPROXIMATE, ACTUAL MAY VARY.

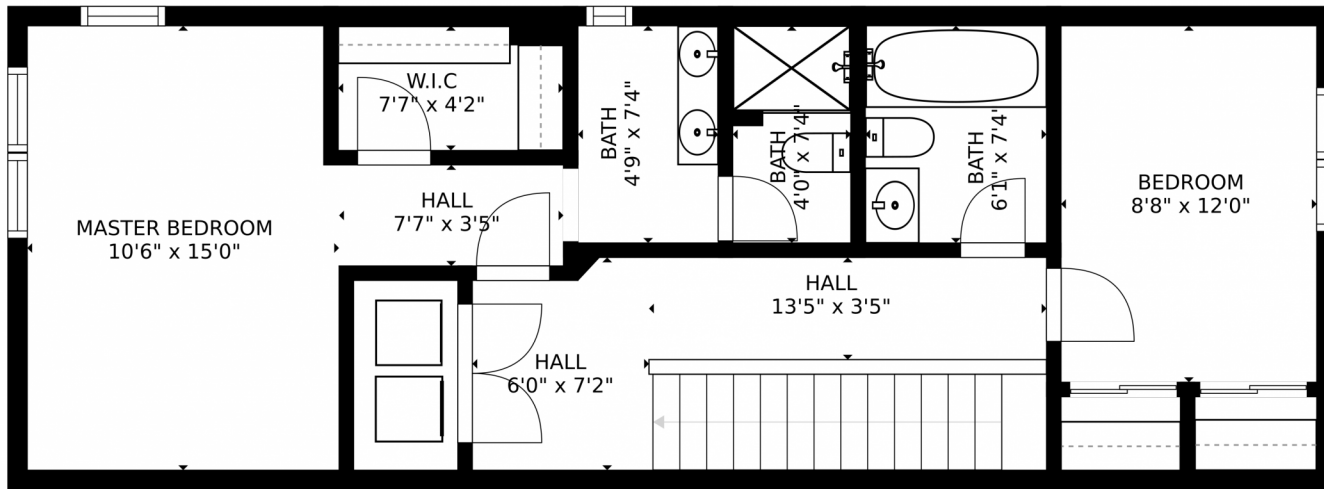
Disclaimer: Sizes and Dimensions are Approximate, Actual May Vary.



**Tonie Benetti**  
303-210-7336  
tonie@tbkrealstate.com  
<https://www.tbkrealstate.com>



6575 Pennywhistle Point, Colorado Springs, CO 80923 – Level 3



SIZES AND DIMENSIONS ARE APPROXIMATE, ACTUAL MAY VARY.

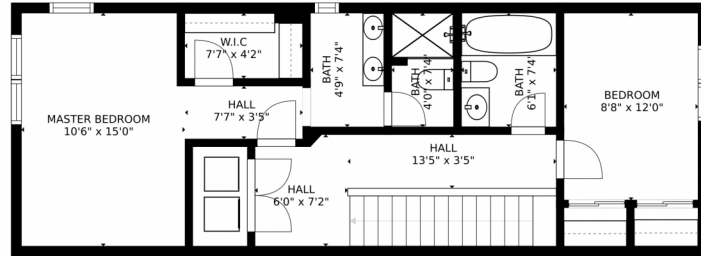
Disclaimer: Sizes and Dimensions are Approximate, Actual May Vary.



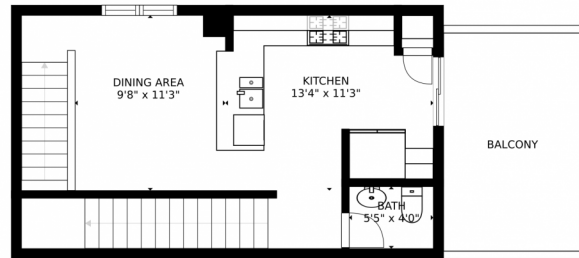
**Tonie Benetti**  
303-210-7336  
tonie@tbkrealstate.com  
<https://www.tbkrealstate.com>



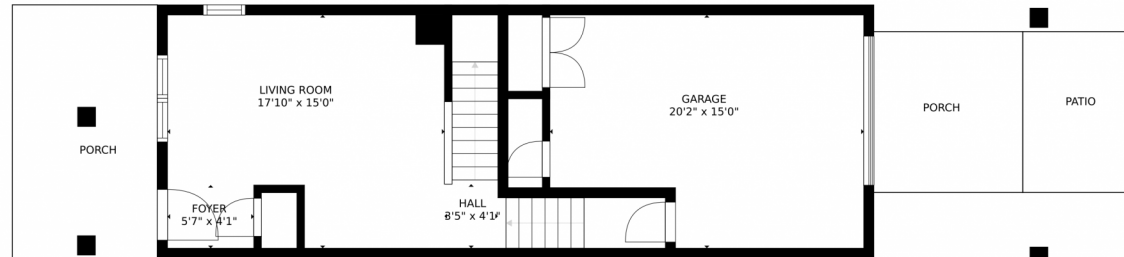
# 6575 Pennywhistle Point, Colorado Springs, CO 80923 – All Levels



FLOOR 3



FLOOR 2



FLOOR 1

SIZES AND DIMENSIONS ARE APPROXIMATE, ACTUAL MAY VARY.

Disclaimer: Sizes and Dimensions are Approximate, Actual May Vary.



**Tonie Benetti**  
303-210-7336  
tonie@tbkrealstate.com  
<https://www.tbkrealstate.com>

