



332 Quarter Circle Lane
 Evergreen, CO 80439
 COMMUNITY: Soda Creek

PRICE \$1,250,000



Single Family



5874 SQFT



4 Beds



3/3 Baths



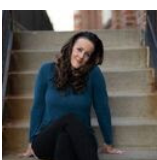
3 Car



10.08 Acre

PROPERTY DETAILS

Welcome Home!! Beautiful 10 acre mountain property is just waiting for you to make it your own! This property has so much to offer - zoned for agriculture! The 5,874 square foot house has four large bedrooms and 6 bathrooms. When you enter the front doors you have a formal dining room to your left, and a formal living room to your right. There is a large family room with a gorgeous vaulted ceiling and so much natural light, and stunning views from every room! The recently-updated kitchen offers many options for seating - a breakfast nook where you can enjoy a meal while taking in the view, or you can engage in a conversation while seated at the bar height island counter. Owners added beautiful granite countertops, stone backsplash, and some amazing copper details you don't want to miss! This house offers 3 decks for you to relax and enjoy the



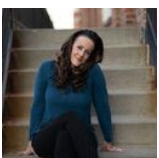
Kimberly Regen
 720-320-0733
 kim@tclipse97.net



Scan code
 for more
 property
 details



amazing views!! Easy access to I-70 for commute into Denver or heading to the slopes in the winter!



Kimberly Regen
720-320-0733
kim@tclipse97.net



Scan code
for more
property
details

