



5422 Grand Fir Way  
 Parker, CO 80134  
 COMMUNITY: Timbers at the Pinery

MLS # 6515041  
 PRICE  
 \$1,175,000



Single Family   5316 SQFT   5 Beds   4/1 Baths   3 Car

## PROPERTY DETAILS

Incredible custom 2-story, 5 bed/5 bath home on one of the most sought-after streets in the Timbers. The home sits at the top of the hill on a meticulously landscaped homesite that backs to open space with spacious forest and mountain views. Upscale features include solid 8' alder doors, custom millwork throughout, recently replaced carpet and burnished wide-plank hardwood flooring, multiple fireplaces to cuddle up in front of on those cold Colorado nights, knotty alder cabinets, wrought iron railings, custom light fixtures, maintenance-free tree deck & so much more. The chef's kitchen delights with knotty-alder cabinets, Bosch and GE profile appliance package including built-in refrigerator and freezer, 5-burner gas stovetop, double ovens, microwave, and wine cooler. The recently finished custom walk-out basement with surround sound, gas fireplace, kitchenette, custom built-ins and woodwork, and spacious bedroom and bath complement the home. Spacious oversized 3-car garage with built-in shelving provides room for all your toys. This home is a must see!

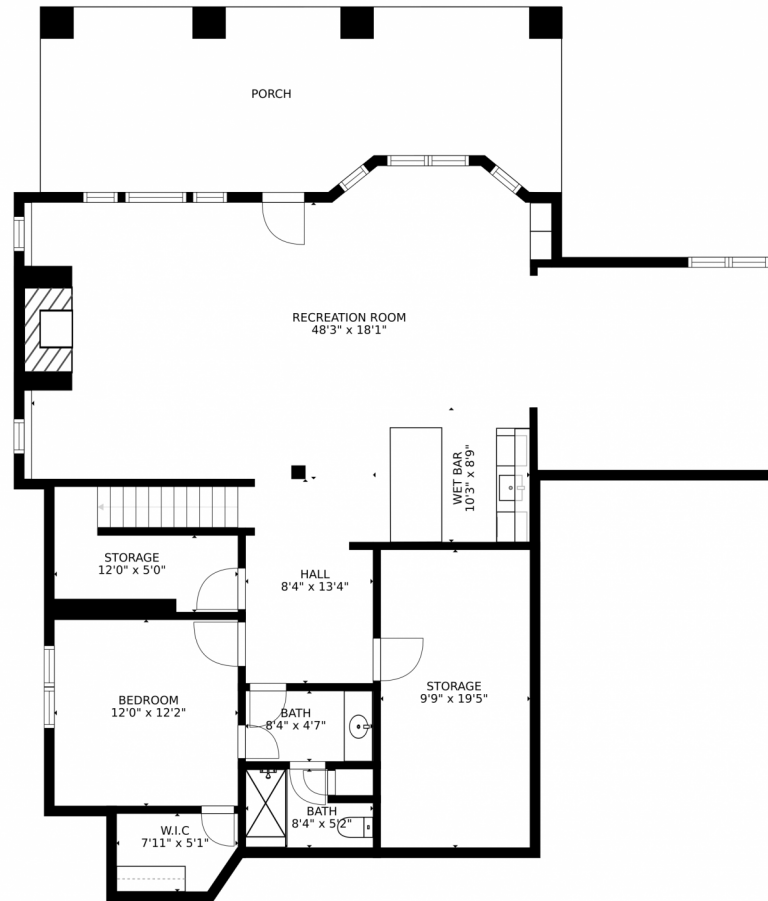


**Michael Sparks**  
 615-618-7146  
 michaelsparks@yourcastle.com

Scan code for more property details



# 5422 Grand Fir Way, Parker, CO 80134 – Lower Level



SIZES AND DIMENSIONS ARE APPROXIMATE, ACTUAL MAY VARY.

Disclaimer: Sizes and Dimensions are Approximate, Actual May Vary.

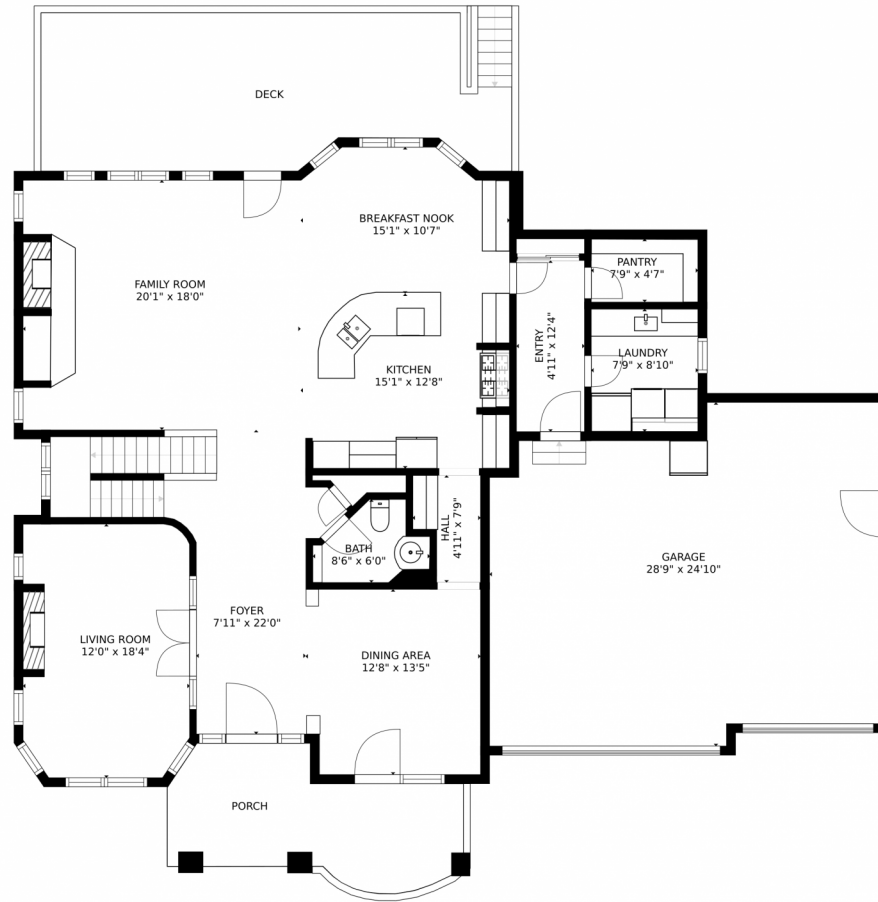


**Michael Sparks**  
615-618-7146  
michaelsparks@yourcastle.com



Scan code  
for more  
property  
details

# 5422 Grand Fir Way, Parker, CO 80134 – Main Level



SIZES AND DIMENSIONS ARE APPROXIMATE, ACTUAL MAY VARY.

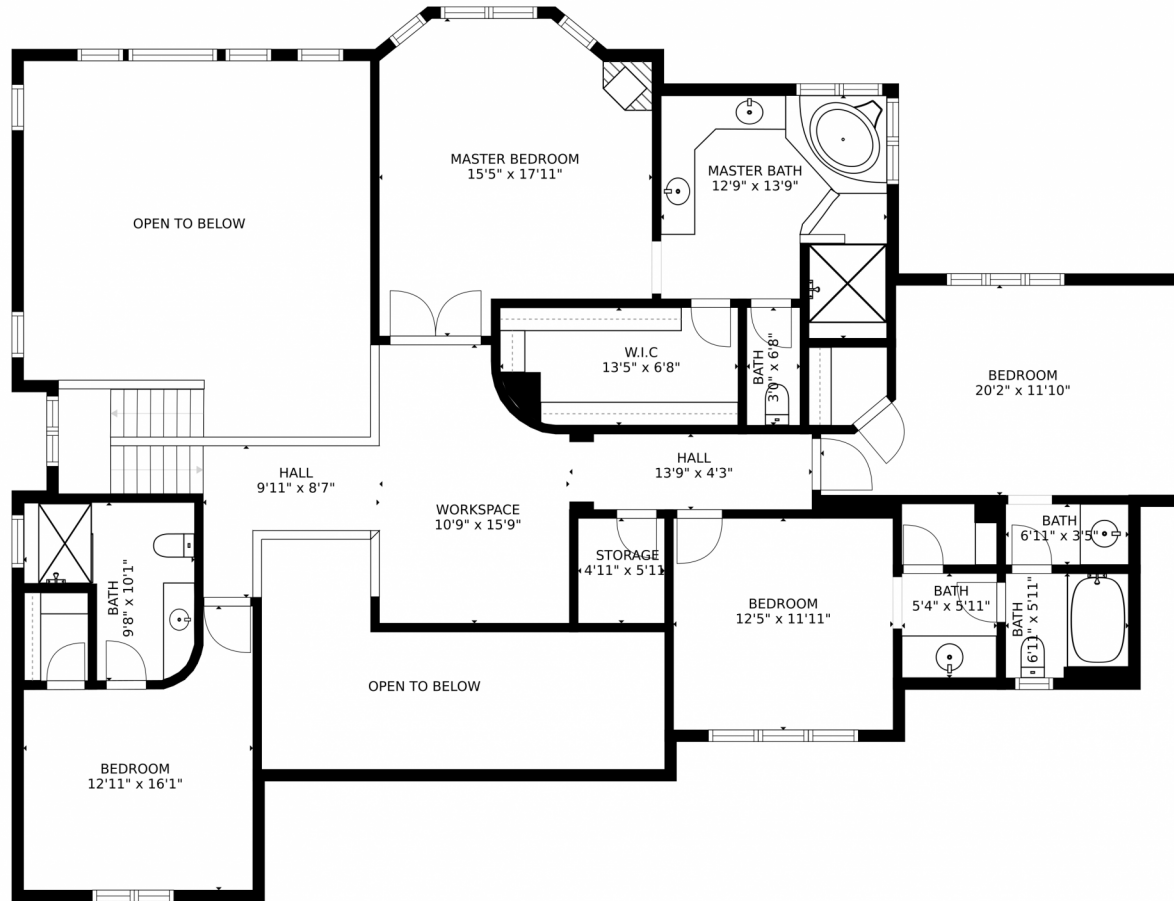
Disclaimer: Sizes and Dimensions are Approximate, Actual May Vary.



**Michael Sparks**  
615-618-7146  
michaelsparks@yourcastle.com



5422 Grand Fir Way, Parker, CO 80134 – 2nd Story



SIZES AND DIMENSIONS ARE APPROXIMATE, ACTUAL MAY VARY.

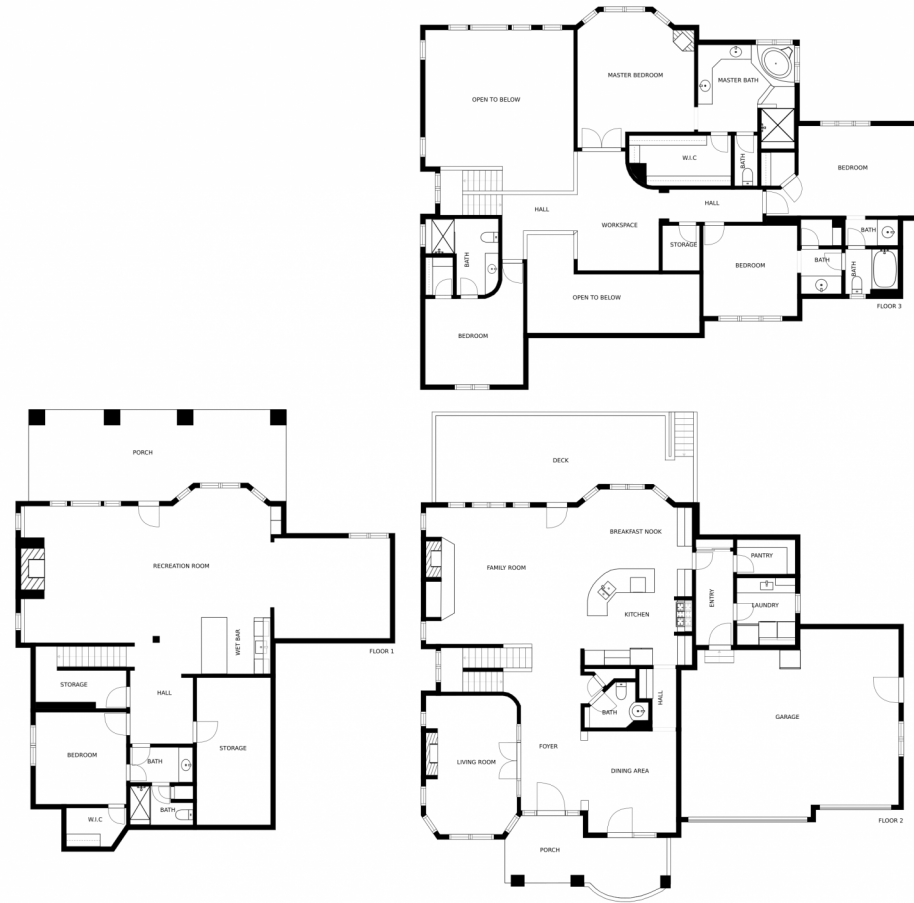
Disclaimer: Sizes and Dimensions are Approximate, Actual May Vary.



**Michael Sparks**  
615-618-7146  
michaelsparks@yourcastle.com



5422 Grand Fir Way, Parker, CO 80134 – All Floors



SIZES AND DIMENSIONS ARE APPROXIMATE, ACTUAL MAY VARY.

Disclaimer: Sizes and Dimensions are Approximate, Actual May Vary.



**Michael Sparks**  
615-618-7146  
michaelsparks@yourcastle.com

