



Condominium



782 SQFT



2 Beds



1 Baths



0.29 Acre

PROPERTY DETAILS

HOA includes Internet and Cable!

Rare find for this stunning condo. Located in one of Denver's most sought after neighborhoods, Gov's Park! This corner unit condo is in a small classic boutique building that was fully restored. It has an open and inviting floor plan with tall ceilings throughout, large windows facing South & East which offer tons of natural light. This condo also has washer & dryer in the unit and central air. Location is amazing, mellow street yet less than a block to a number of bars, restaurants, a brewery, Carboy Winery, Trader Joe's and much more. Blocks to the Cherry Creek Bike Path and easy access to head to the mountains in addition to Cherry Creek, Wash Park and Downtown. There is parking spaces available for rent in lots on the block sarah@knight5280.com. There are several lots and we have seen prices between \$60-\$100 a month for parking

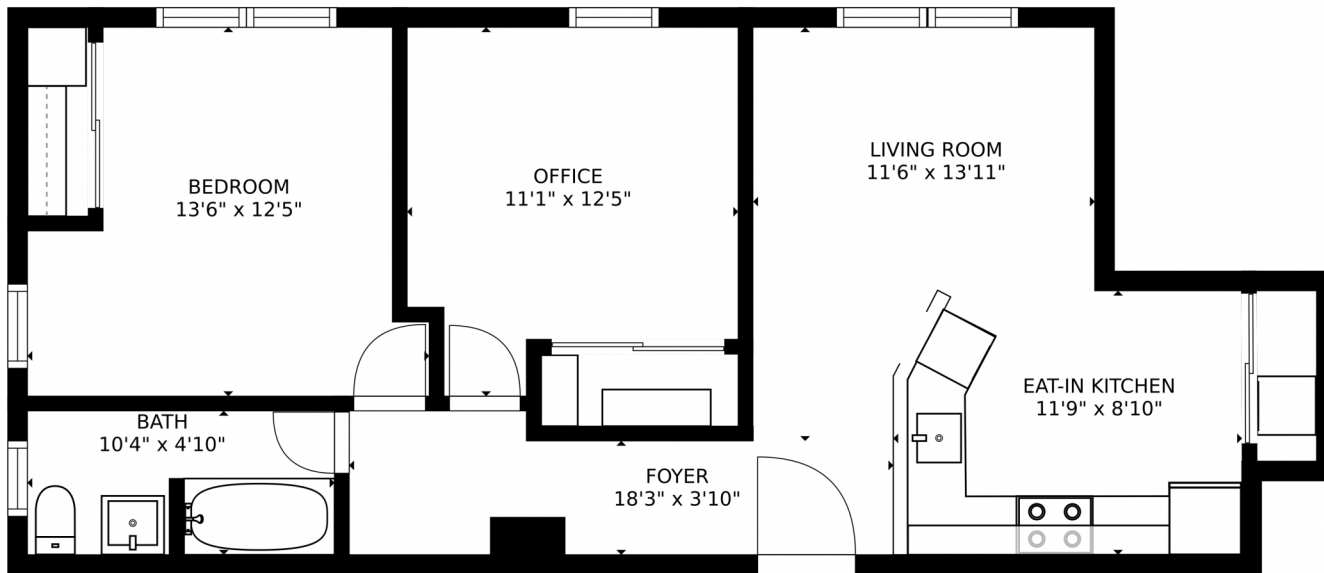


Jennifer Steinert
 303-246-2226
 jen@madisonprops.com



Scan code
 for more
 property
 details





SIZES AND DIMENSIONS ARE APPROXIMATE, ACTUAL MAY VARY.

Disclaimer: Sizes and Dimensions are Approximate, Actual May Vary.



Jennifer Steinert
303-246-2226
jen@madisonprops.com

