



Single Family



4654 SQFT



5 Beds



3 Baths



2 Car



8.8 Acre

PROPERTY DETAILS

Soak in the sunshine at this spectacular mountain estate nestled in the coveted Soda Creek area of Evergreen. You will enjoy the serenity and spectacular valley views along with a retreat-like feel perfectly suited for both relaxing and entertaining.



Tammy Drozda

720-308-1652

tammy@madisonprops.com

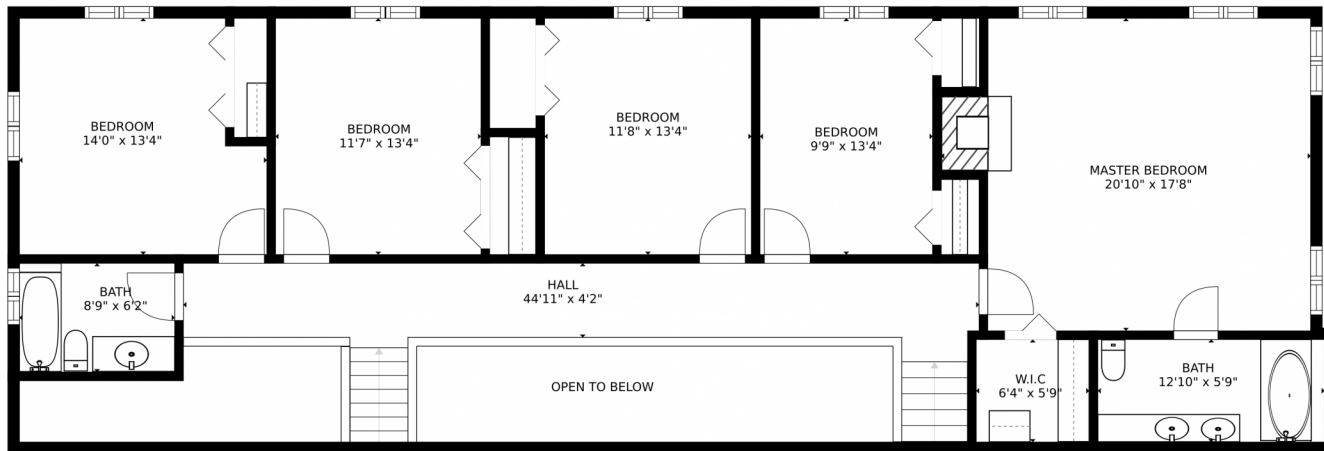
<https://www.tammydrozdahomes.com>



Scan code
for more
property
details



32728 Alta Vista Drive, Evergreen, CO 80439 – 2nd Story



SIZES AND DIMENSIONS ARE APPROXIMATE, ACTUAL MAY VARY.

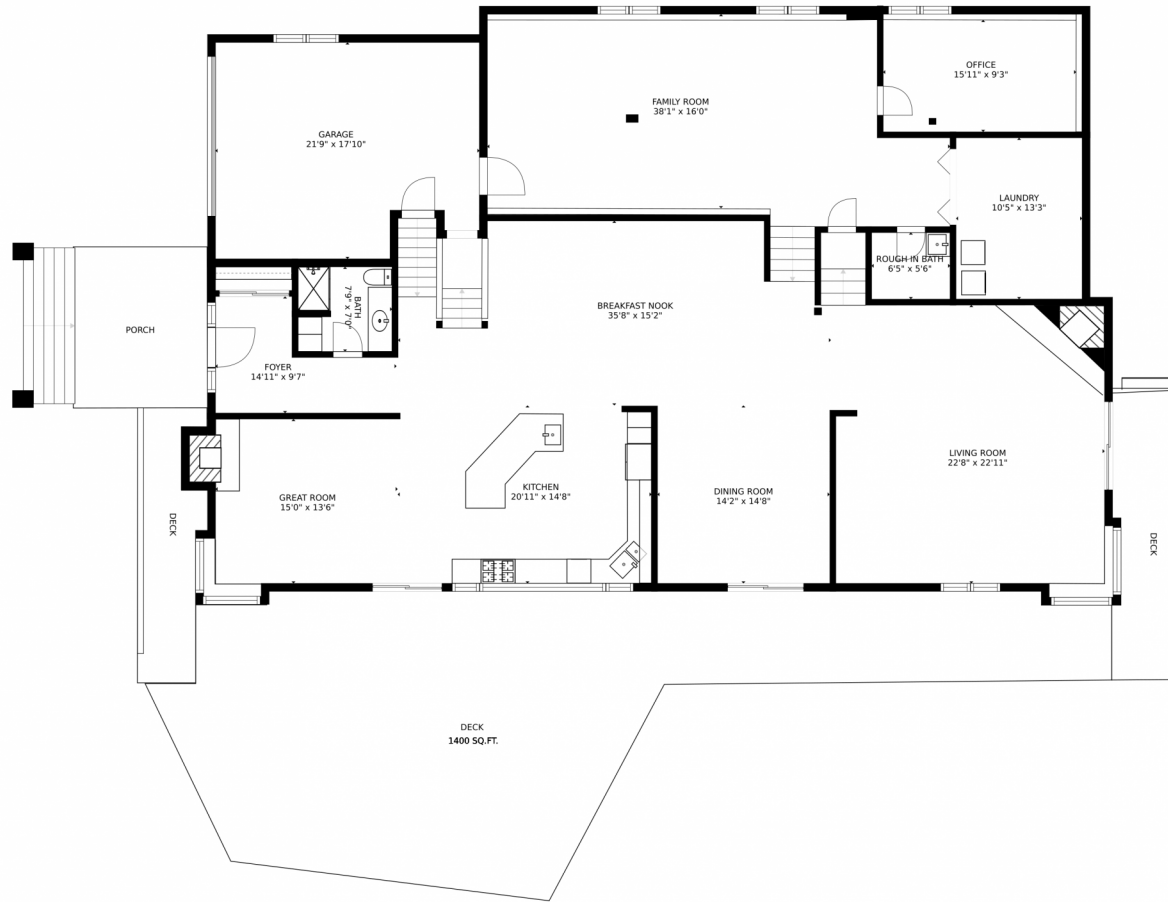
Disclaimer: Sizes and Dimensions are Approximate, Actual May Vary.



Tammy Drozda
720-308-1652
tammy@madisonprops.com
<https://www.tammydrozdahomes.com>



32728 Alta Vista Drive, Evergreen, CO 80439 – Main Level



SIZES AND DIMENSIONS ARE APPROXIMATE, ACTUAL MAY VARY.

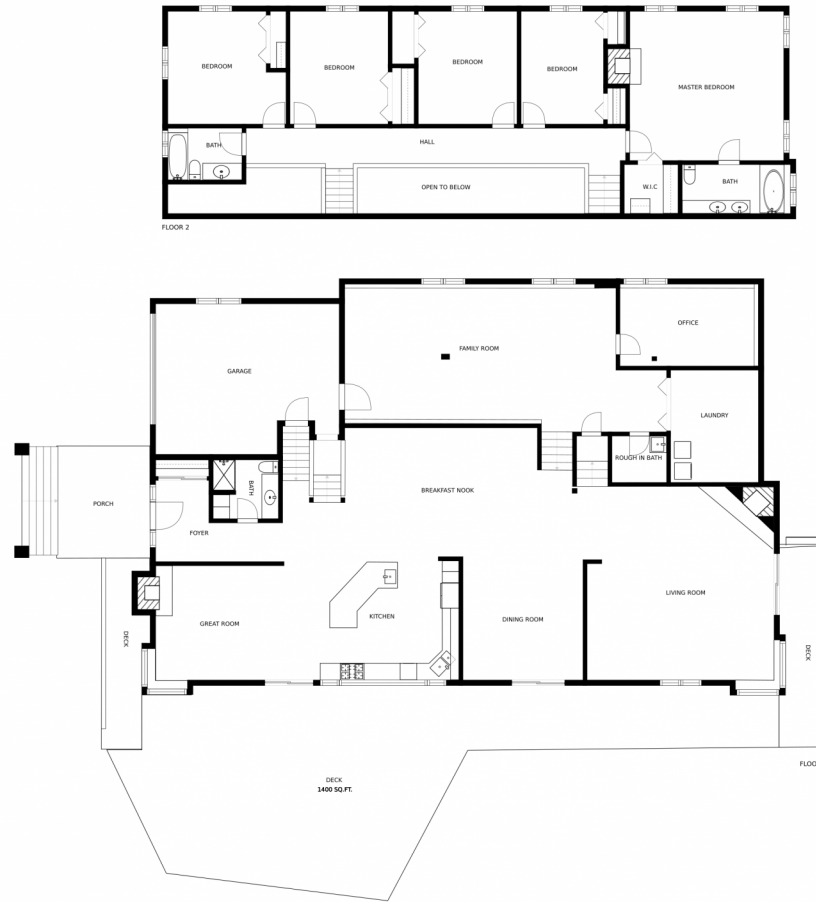
Disclaimer: Sizes and Dimensions are Approximate, Actual May Vary.



Tammy Drozda
720-308-1652
tammy@madisonprops.com
<https://www.tammydrozdahomes.com>



32728 Alta Vista Drive, Evergreen, CO 80439 – All Floors



SIZES AND DIMENSIONS ARE APPROXIMATE, ACTUAL MAY VARY.

Disclaimer: Sizes and Dimensions are Approximate, Actual May Vary.



Tammy Drozda
720-308-1652
tammy@madisonprops.com
<https://www.tammydrozdahomes.com>

