

Single Family



6598 SQFT



6 Beds



6/2 Baths



3 Car



0.14 Acre

PROPERTY DETAILS

VIRTUAL TOUR <https://vrtourhosts.com/listing/29074/slideshow>

Custom elevated 3+ story home sits above the rest of the neighborhood. Exposed beams and clean lines all compliment the modern function of the home incorporated throughout. One of the best homes in the Blue Ribbon Cory-Merrill neighborhood, there is no other home like this truly a must see! Smart home & lighting with security & cameras. You are greeted by the 1st of 3 patios, then step into a light filled home & walk through the spacious living room & linear fireplace, adjacent home office & stunning open floor plan. Chefs gourmet kitchen and F. Bertazzoni professional appliances along with a coffee bar, ice maker & huge walk in pantry. Double glass doors expanding the main floor into the all seasons 2nd patio with gas BBQ, overhead radiant heating & flat screen TV. This level finishes with a spacious master & 5 pc bath, mud room, laundry room, dog spa & powder bath. Backyard features a 6 ft privacy fence, 45 ft long raised garden beds. The garage is finished with an extra high door for taller vehicles, with dual outlets for electric vehicle charging and a separate 3rd car garage. Spacious lower level has a generous great room ideal for entertaining with a wet bar, ice machine, wine cellar & workout room/bedroom, full bath & large



Tonie Benetti

303-210-7336

tonie@tbkrealstate.com

<https://www.tbkrealstate.com>

Scan code
for more
property
details



mechanical room with storage galore! The center of the home features a breathtaking staircase with custom 40 ft light fixture. Upper floor consists of 4 large en-suites all with full bathrooms & a 2nd laundry room! Penthouse is an Entertainers dream with a wet bar, ice machine & powder bath. Modern beauty on an elevated site which enables the most incredible panoramic views year around. Spacious roof top deck with gas fire pit and ample seating areas for Simply Stunning 360° views of the entire front range.



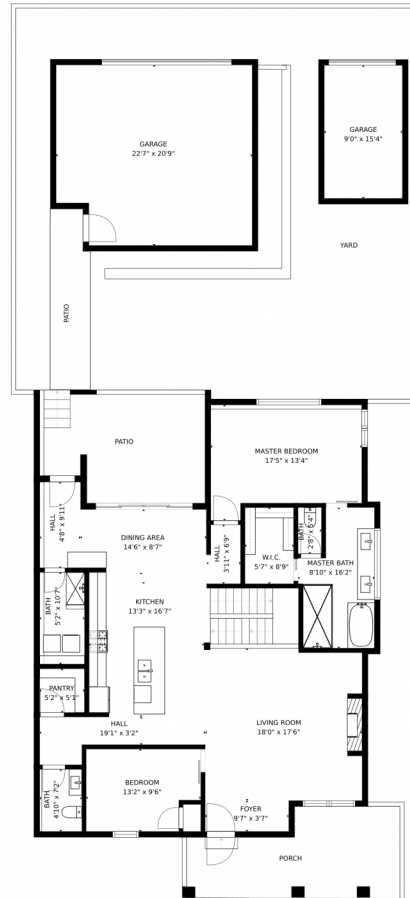
Tonie Benetti
303-210-7336
tonie@tbkrealstate.com
<https://www.tbkrealstate.com>



Scan code
for more
property
details



1560 S Fillmore Street, Denver, CO 80210 – Main Level



SIZES AND DIMENSIONS ARE APPROXIMATE, ACTUAL MAY VARY.

Disclaimer: Sizes and Dimensions are Approximate, Actual May Vary.

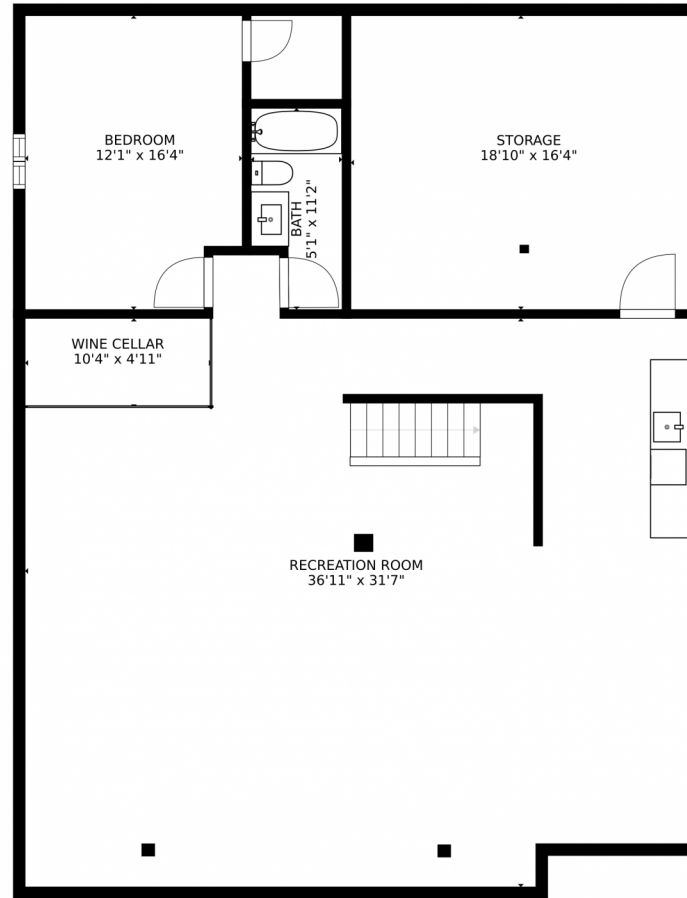


Tonie Benetti
303-210-7336
tonie@tbkrealstate.com
<https://www.tbkrealstate.com>



Scan code
for more
property
details

1560 S Fillmore Street, Denver, CO 80210 – Lower Level



SIZES AND DIMENSIONS ARE APPROXIMATE, ACTUAL MAY VARY.

Disclaimer: Sizes and Dimensions are Approximate, Actual May Vary.

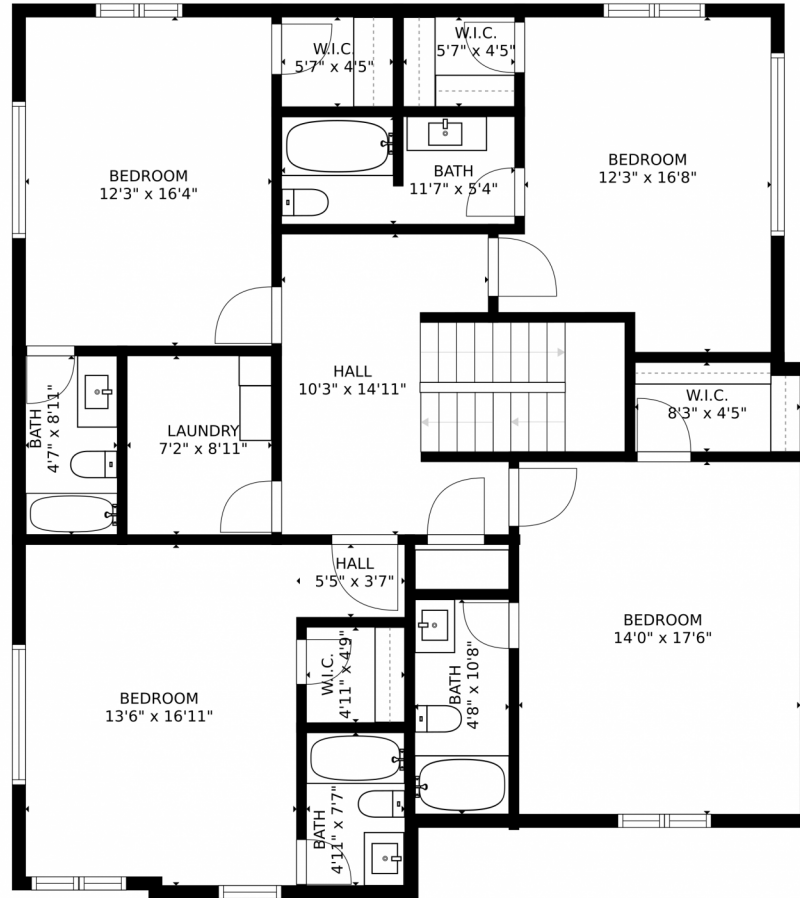


Tonie Benetti
303-210-7336
tonie@tbkrealstate.com
<https://www.tbkrealstate.com>



Scan code
for more
property
details

1560 S Fillmore Street, Denver, CO 80210 – 2nd Story



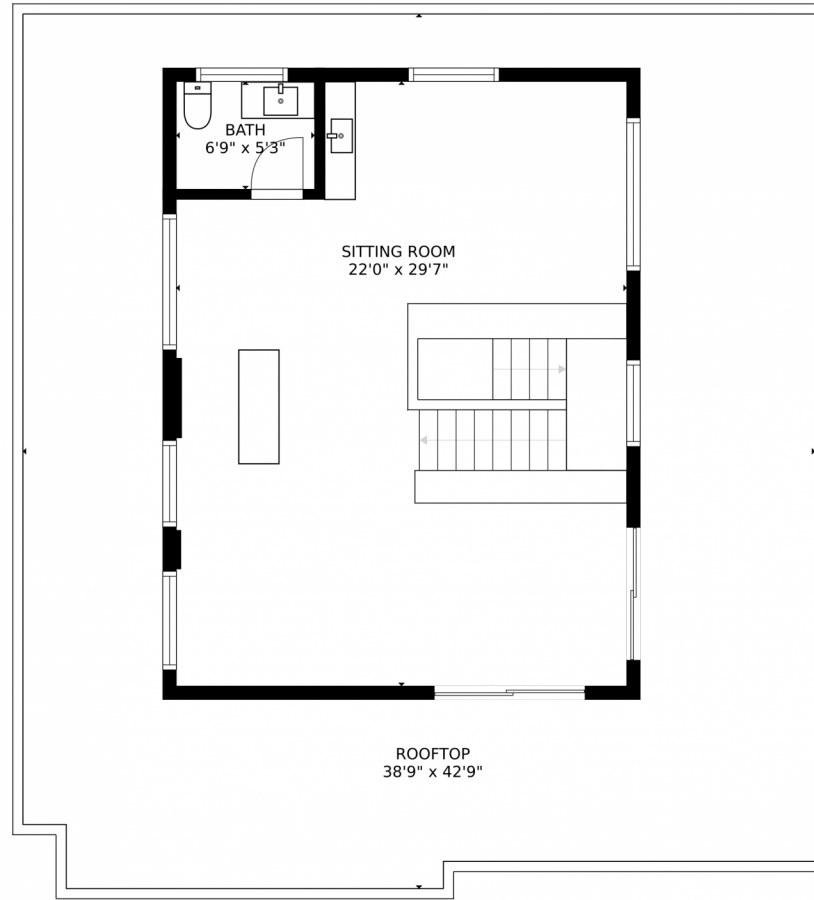
SIZES AND DIMENSIONS ARE APPROXIMATE, ACTUAL MAY VARY.

Disclaimer: Sizes and Dimensions are Approximate, Actual May Vary.



Tonie Benetti
303-210-7336
tonie@tbkrealstate.com
<https://www.tbkrealstate.com>





SIZES AND DIMENSIONS ARE APPROXIMATE, ACTUAL MAY VARY.

Disclaimer: Sizes and Dimensions are Approximate, Actual May Vary.



Tonie Benetti
303-210-7336
tonie@tbkrealstate.com
<https://www.tbkrealstate.com>



1560 S Fillmore Street, Denver, CO 80210 – All Floors



SIZES AND DIMENSIONS ARE APPROXIMATE, ACTUAL MAY VARY.

Disclaimer: Sizes and Dimensions are Approximate, Actual May Vary.



Tonie Benetti
303-210-7336
tonie@tbkrealstate.com
<https://www.tbkrealstate.com>

