



Single Family



7100 SQFT



4 Beds



4/1 Baths



3 Car



5.4 Acre

PROPERTY DETAILS

Enjoy a quiet, uncluttered mountain life but still be within an easy drive of all of the city's cultural and sporting events. This luxurious home sits on over 5 south-facing, gently sloping acres graced with rock outcroppings and open spaces to view the wildlife, and it's only 35 minutes to downtown Denver or 45 minutes to skiing. This home has an easy living, open floor plan, with completely remodeled bathrooms, new flooring and too many recent updates to list. On the main level you'll find the master suite, office, laundry, kitchen, great room, dining room, family room and a lovely patio with a gorgeous water feature. Spectacular mountain views from virtually all rooms, upstairs and down. You can even see the city lights! The walkout lower level features 10 foot ceilings, 3 more large bedrooms, 3 bathrooms, a 600 bottle wine room and gun room with aspen tongue & groove walls, and an amazing, new home theater. The recreation room is more than big enough for a large party and has a wet bar with a wine cooler. Come and see this gorgeous, move in ready mountain retreat! Showings start Tuesday February 2nd. Watch the video! <https://vimeo.com/468767119>

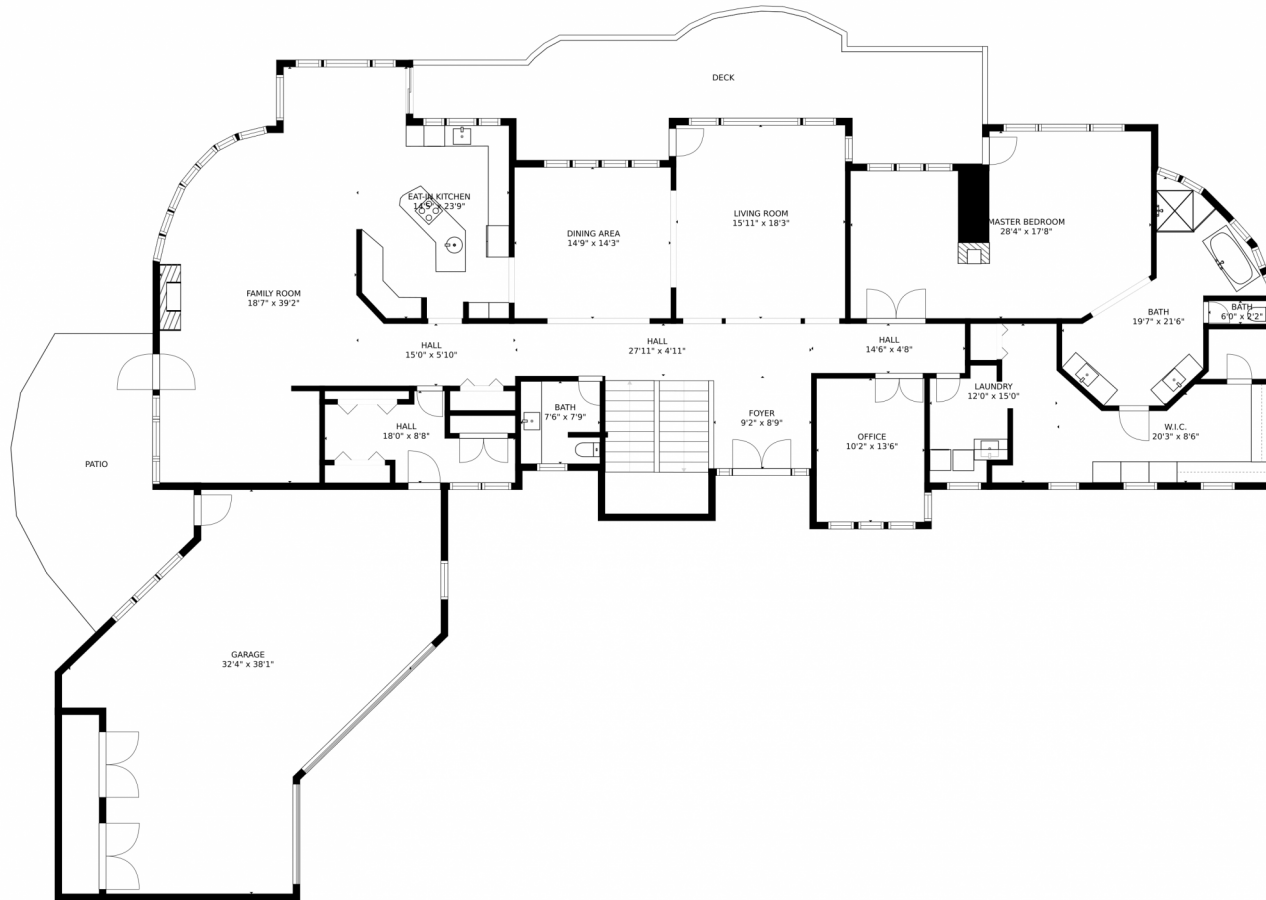


John Wann
 720-456-0156
 johnwann@kw.com



Scan code
 for more
 property
 details





SIZES AND DIMENSIONS ARE APPROXIMATE, ACTUAL MAY VARY.

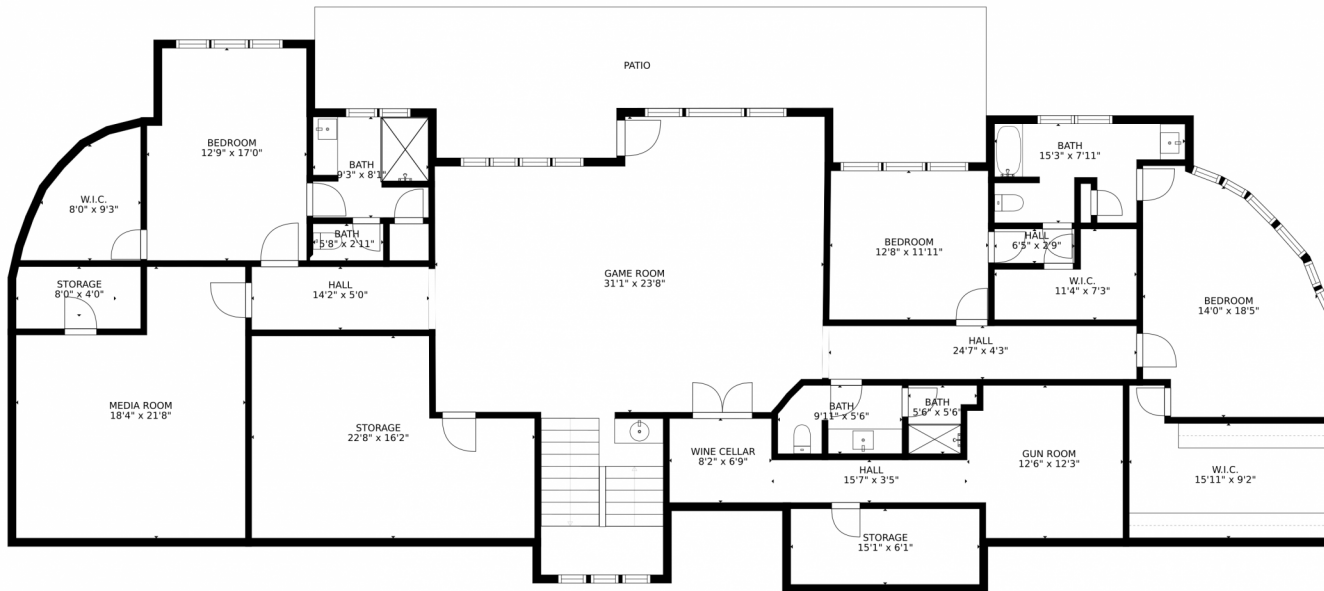
Disclaimer: Sizes and Dimensions are Approximate, Actual May Vary.



John Wann
720-456-0156
johnwann@kw.com



814 Neville Lane, Golden, CO 80401 — Lower Level



SIZES AND DIMENSIONS ARE APPROXIMATE, ACTUAL MAY VARY.

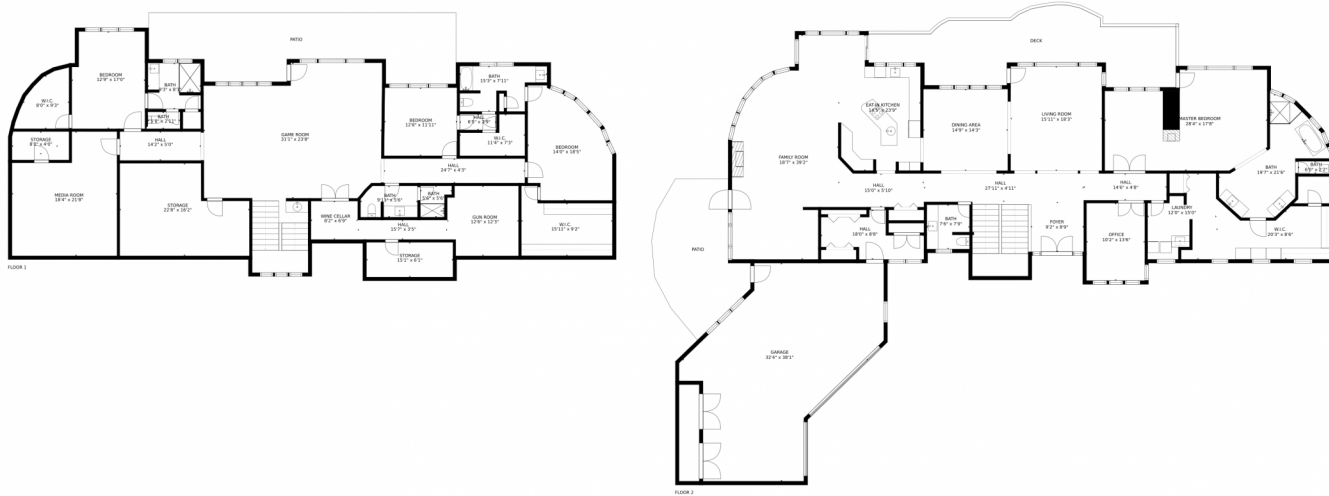
Disclaimer: Sizes and Dimensions are Approximate, Actual May Vary.



John Wann
720-456-0156
johnwann@kw.com



814 Neville Lane, Golden, CO 80401 – All Levels



SIZES AND DIMENSIONS ARE APPROXIMATE, ACTUAL MAY VARY.

Disclaimer: Sizes and Dimensions are Approximate, Actual May Vary.



John Wann
720-456-0156
johnwann@kw.com

