



Single Family



1664 SQFT



2 Beds



2 Baths



0.15 Acre

PROPERTY DETAILS

Darling bungalow in a quiet, upcoming neighborhood. Located minutes from fabulous Sloan's Lake, shopping, eating, bars and businesses. Earth tone colors on main floor. Living room with deep built in bookcase/china cabinet with drawers. Main floor bath with linen closet for storage, updated floor and vanity. Basement bath with updated toilet, new paint, towel bars and mirror. Hardwood floors beneath nearly new carpet. Newer wood blinds on main floor windows. Ceiling fans. Swamp cooler. Spacious basement laundry room with tub and storage under stairs. Kitchen stove 2 years old. 5 year old furnace. 6 year old hot water heater. 2year old roof and decking. Situated on a large 6625 square foot lot with mature trees, landscaping and front and back fencing. Storage shed. Beyond the wire fence in the back is an area where one could build a garage, park RVs or park several cars. There is a small strip next to the far wood fence that is an easement. Buyer and Buyer's agent to verify square footage.

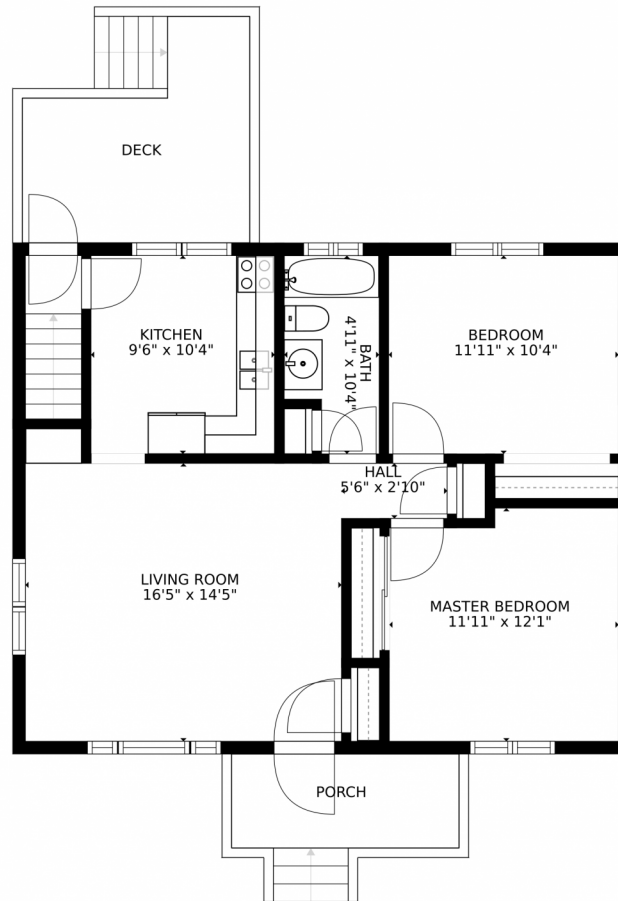


Virginia Heidinger
303-888-0034
homesbyvirginia@msn.com



Scan code
for more
property
details





SIZES AND DIMENSIONS ARE APPROXIMATE, ACTUAL MAY VARY.

Disclaimer: Sizes and Dimensions are Approximate, Actual May Vary.

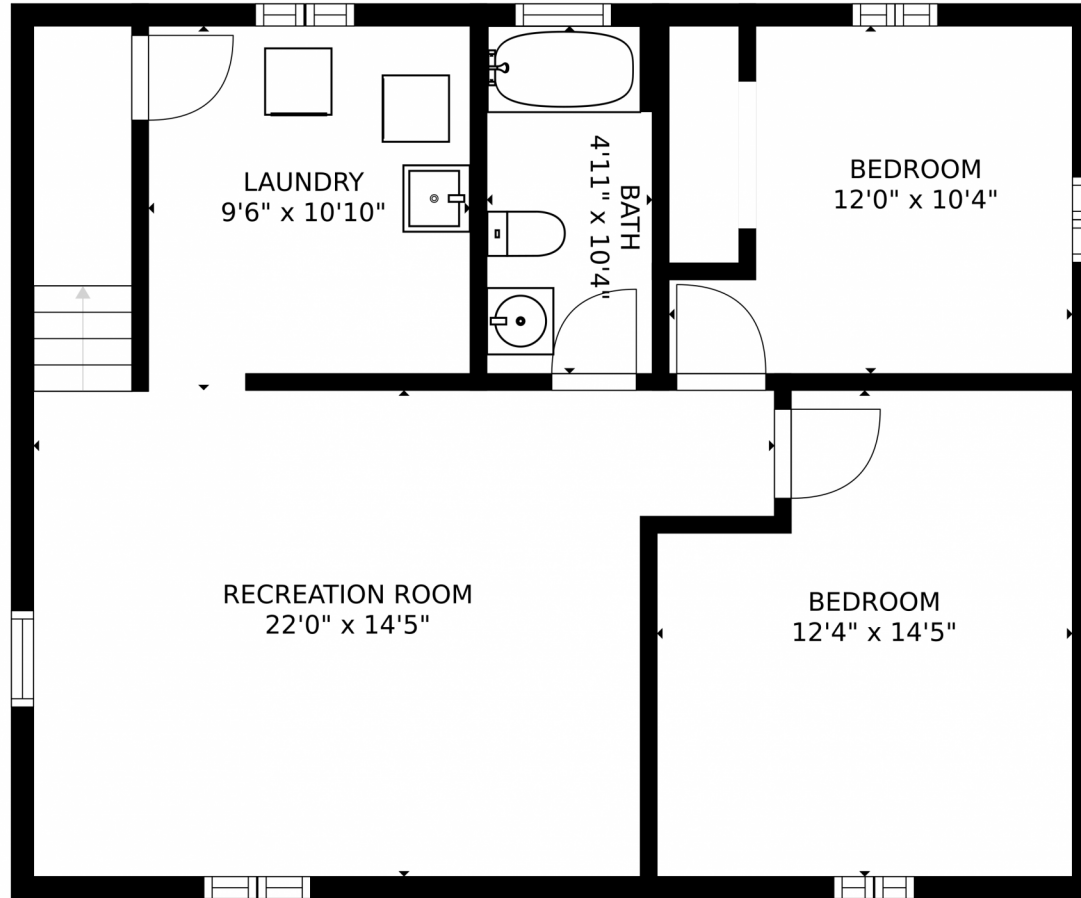


Virginia Heidinger
303-888-0034
homesbyvirginia@msn.com



Scan code
for more
property
details

2635 Chase Street, Wheat Ridge, CO 80214 – Basement



SIZES AND DIMENSIONS ARE APPROXIMATE, ACTUAL MAY VARY.

Disclaimer: Sizes and Dimensions are Approximate, Actual May Vary.



Virginia Heindinger
303-888-0034
homesbyvirginia@msn.com



2635 Chase Street, Wheat Ridge, CO 80214 – All Levels



SIZES AND DIMENSIONS ARE APPROXIMATE, ACTUAL MAY VARY.

Disclaimer: Sizes and Dimensions are Approximate, Actual May Vary.



Virginia Heidinger
303-888-0034
homesbyvirginia@msn.com



Scan code
for more
property
details