



7600 South Rosemary Circle
 Centennial, CO 80112
COMMUNITY: Willow Creek

MLS # 7916401
PRICE \$425,000



Villa



1897 SQFT



3 Beds



2/1 Baths



2 Car



0.07 Acre

PROPERTY DETAILS

Rare opportunity for Willow Creek patio home surrounded by greenbelts, community pool, tennis and clubhouse. Cherry Creek Schools. Writer Home. Large rooms, bright, light and spacious floor plan. Needs updating.



Ron Thorne

303-880-8984

ron@thornehomes.com

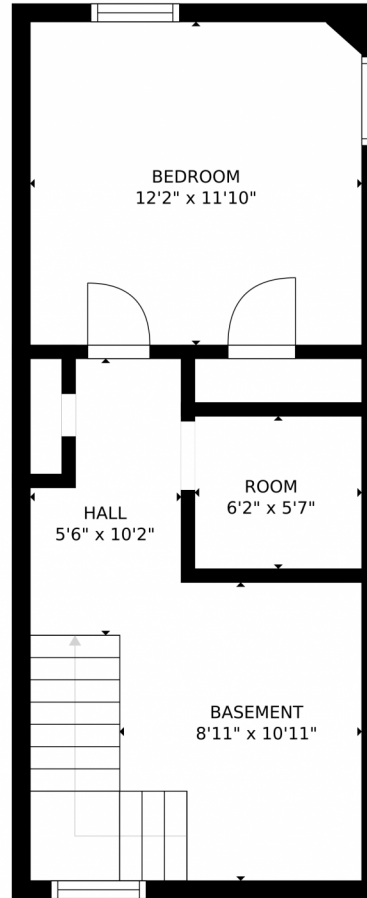
<http://www.viewdenverhomesforsale.com>



Scan code
 for more
 property
 details



7600 South Rosemary Circle, Centennial, CO 80112 – Basement



SIZES AND DIMENSIONS ARE APPROXIMATE, ACTUAL MAY VARY.

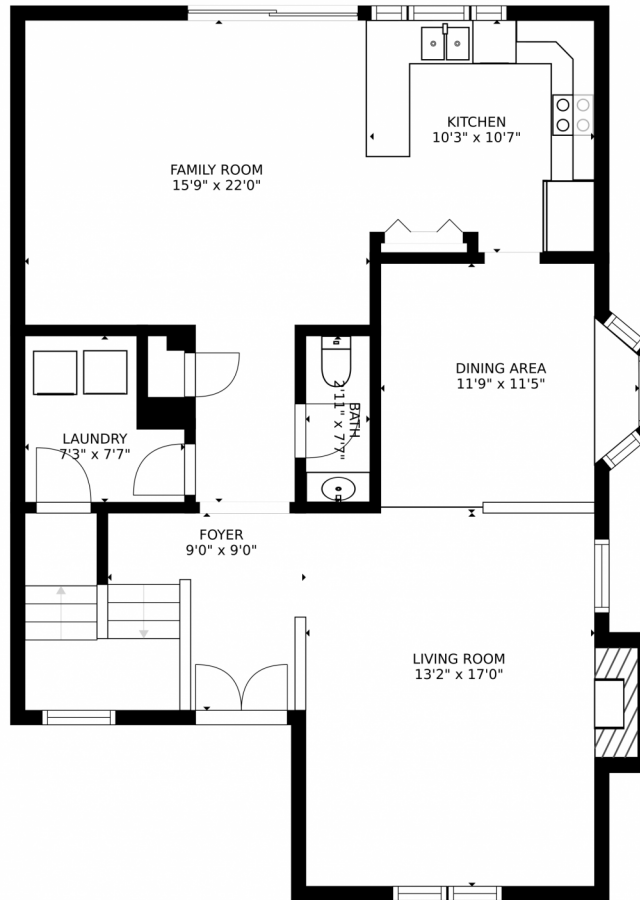
Disclaimer: Sizes and Dimensions are Approximate, Actual May Vary.



Ron Thorne
303-880-8984
ron@thornehomes.com
<http://www.viewdenverhomesforsale.com>



7600 South Rosemary Circle, Centennial, CO 80112 – Main Floor



SIZES AND DIMENSIONS ARE APPROXIMATE, ACTUAL MAY VARY.

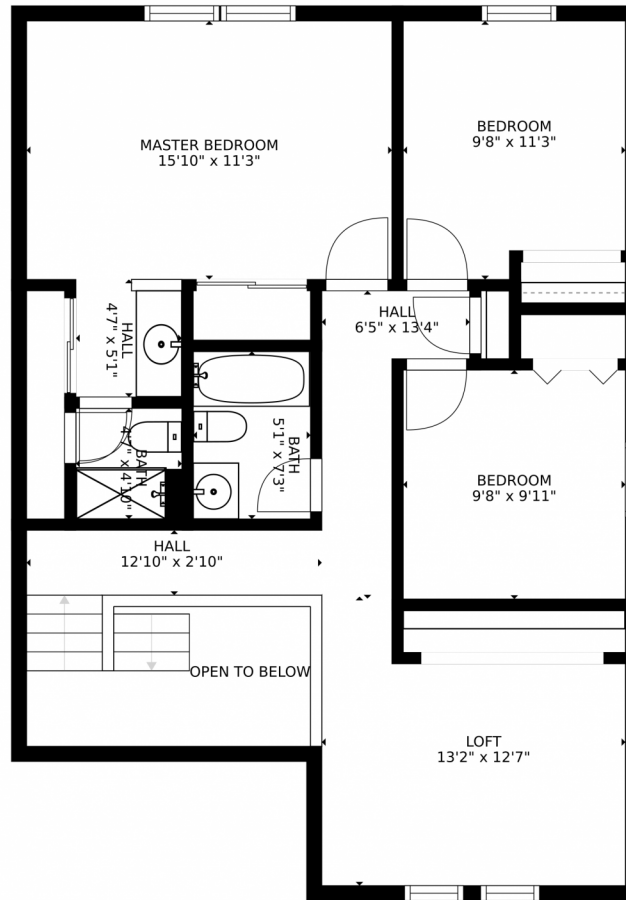
Disclaimer: Sizes and Dimensions are Approximate, Actual May Vary.



Ron Thorne
303-880-8984
ron@thornehomes.com
<http://www.viewdenverhomesforsale.com>



7600 South Rosemary Circle, Centennial, CO 80112 – Second Floor



SIZES AND DIMENSIONS ARE APPROXIMATE, ACTUAL MAY VARY.

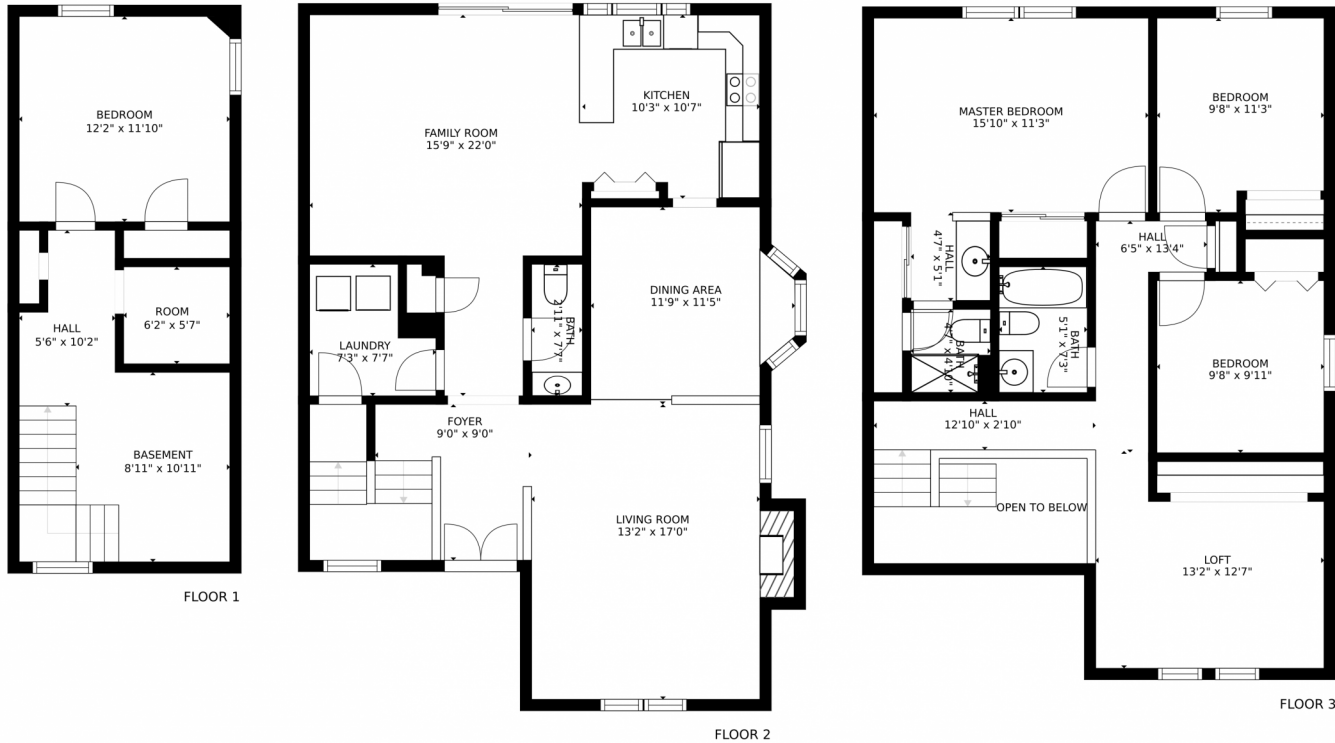
Disclaimer: Sizes and Dimensions are Approximate, Actual May Vary.



Ron Thorne
303-880-8984
ron@thornehomes.com
<http://www.viewdenverhomesforsale.com>



7600 South Rosemary Circle, Centennial, CO 80112 – All Floors



SIZES AND DIMENSIONS ARE APPROXIMATE, ACTUAL MAY VARY.

Disclaimer: Sizes and Dimensions are Approximate, Actual May Vary.



Ron Thorne
303-880-8984
ron@thornehomes.com
<http://www.viewdenverhomesforsale.com>



Scan code
for more
property
details

