



Single Family



3534 SQFT



4 Beds



3 Baths



6 Car



5 Acre

PROPERTY DETAILS

Amazing location! This home is very cozy and inviting located in one of Evergreens most coveted neighborhoods Soda Creek. Perfectly situated at the end of the cul-de-sac on 5 acres of sun-drenched private natural and manicured landscape. This floor-plan offers seamless transitions from room to room with living spaces for family celebrations or private retreats. Abundant natural sunlight and serene mountain views through large newer custom Sierrah Pacific windows in most every room set the mood for relaxation anytime of the day. Hard wood flooring and newer carpet and flooring throughout this home. Main floor bedroom with bathroom and dry sauna, updated kitchen with granite and stainless appliances is the heart of the home flows nicely from family and dining rooms and out to multiple decks with more views and privacy. Just outside the family room and kitchen sliding glass door is a large deck for coffee, meals, drinks or just relaxing. Upstairs is a perfect set up with 3 bedrooms, 2 baths and open loft area, ideal for a home office with views galore! Unfinished basement with walk out is just waiting for you to make it your own. 3 car garage detached super garage oversized and extra deep (940 sq ft) offers room for cars and 4th bay (410 sq ft) has been turned into a fully finished heated workshop with a bonus loft (765 sq ft) waiting for your finishes to complete into a home office or additional living space. 1175 sq. ft. Storage/Utility/Open space area not counted in sq. ft. Enjoy



Tonie Benetti

303-210-7336

tonie@tbkrealstate.com

<https://www.tbkrealstate.com>

Scan code
for more
property
details



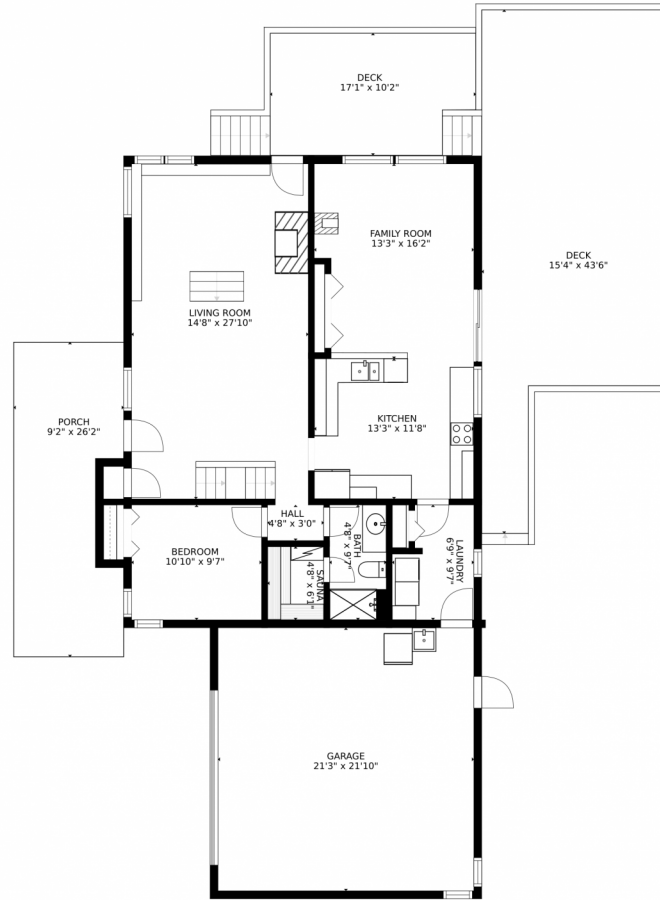
Evergreen and private trails and pond within the Soda Creek subdivision. Close to Evergreen amenities, miles of biking, hiking trails, hometown lake, and easy 25-30 minute commute to Denver. Zoned for horses or livestock see www.sodacreek.org for details



Tonie Benetti
303-210-7336
tonie@tbkrealstate.com
<https://www.tbkrealstate.com>



1298 Starwood Lane, Evergreen, CO 80439 – Main Level



SIZES AND DIMENSIONS ARE APPROXIMATE, ACTUAL MAY VARY.

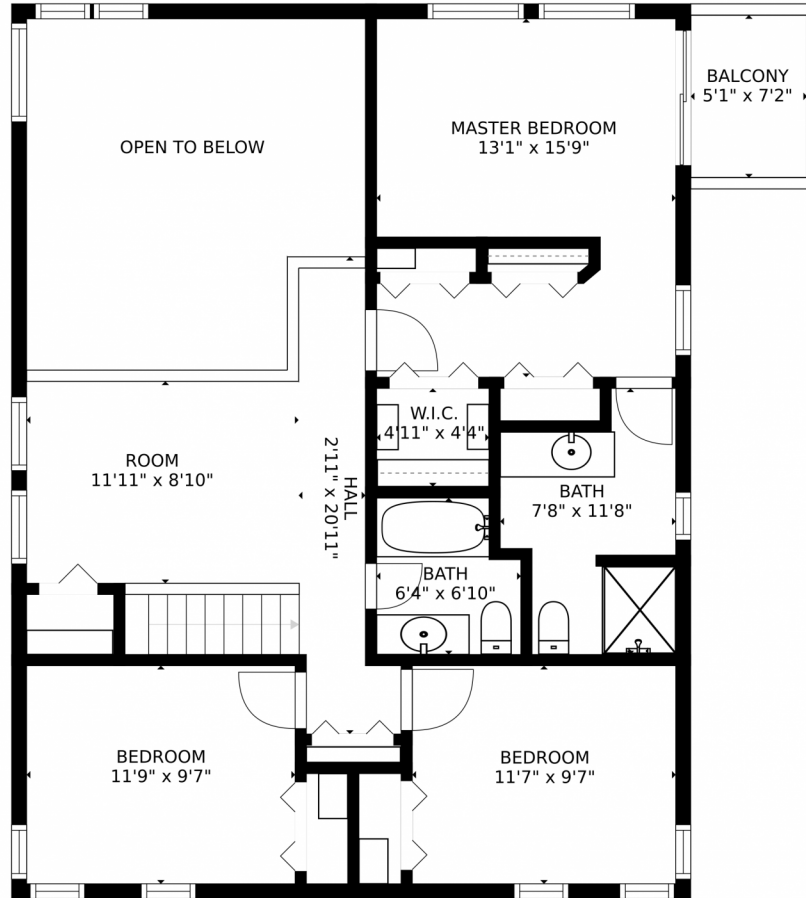
Disclaimer: Sizes and Dimensions are Approximate, Actual May Vary.



Tonie Benetti
303-210-7336
tonie@tbkrealstate.com
<https://www.tbkrealstate.com>



1298 Starwood Lane, Evergreen, CO 80439 – 2nd Level



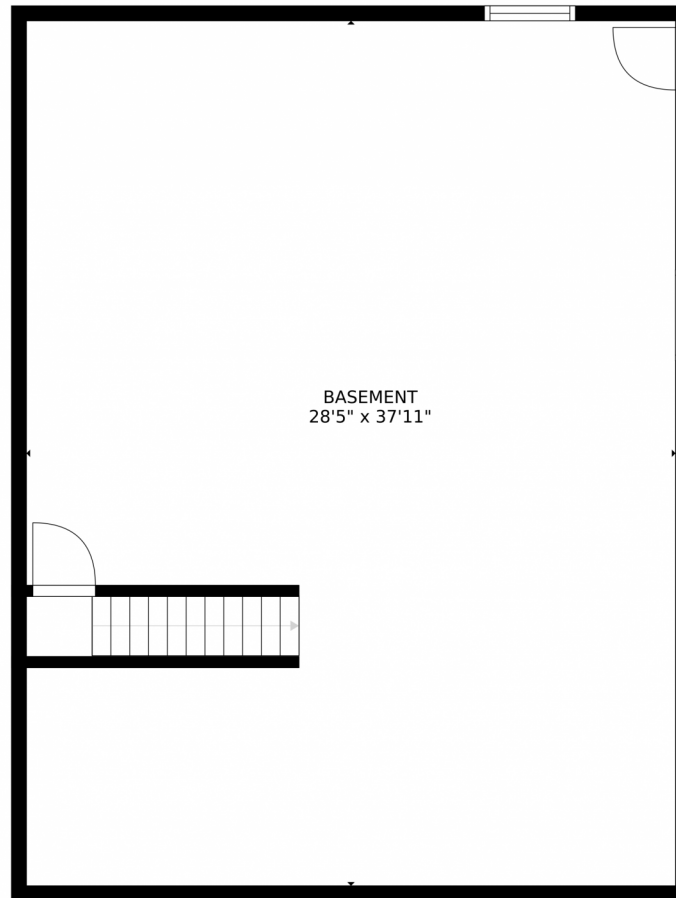
SIZES AND DIMENSIONS ARE APPROXIMATE, ACTUAL MAY VARY.

Disclaimer: Sizes and Dimensions are Approximate, Actual May Vary.



Tonie Benetti
303-210-7336
tonie@tbkrealstate.com
<https://www.tbkrealstate.com>





SIZES AND DIMENSIONS ARE APPROXIMATE, ACTUAL MAY VARY.

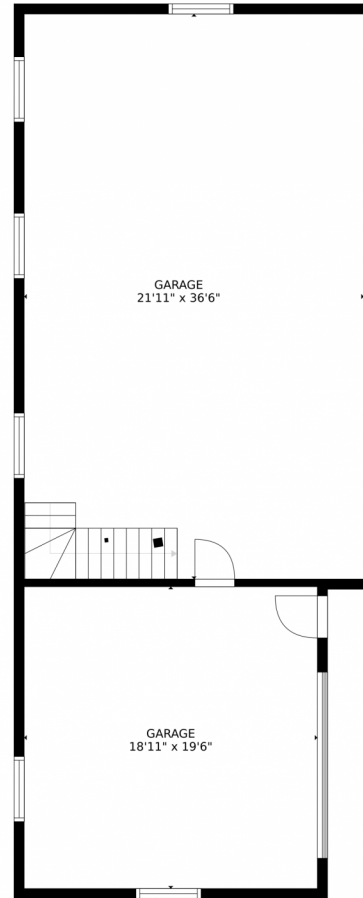
Disclaimer: Sizes and Dimensions are Approximate, Actual May Vary.



Tonie Benetti
303-210-7336
tonie@tbkrealstate.com
<https://www.tbkrealstate.com>



1298 Starwood Lane, Evergreen, CO 80439 — Detached Garage - Main



SIZES AND DIMENSIONS ARE APPROXIMATE, ACTUAL MAY VARY.

Disclaimer: Sizes and Dimensions are Approximate, Actual May Vary.

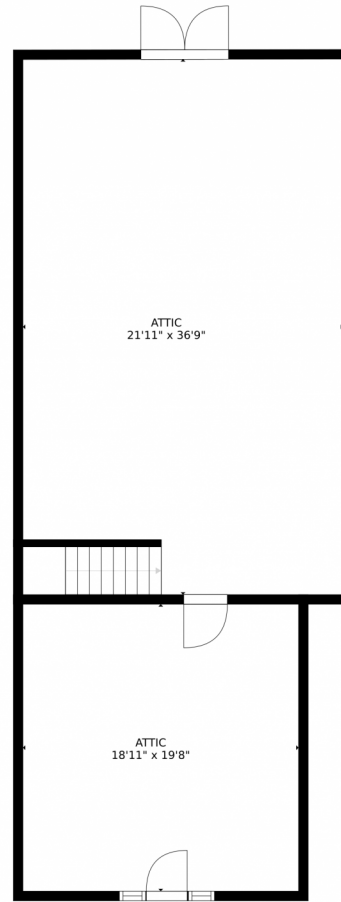


Tonie Benetti
303-210-7336
tonie@tbkrealstate.com
<https://www.tbkrealstate.com>



Scan code
for more
property
details

1298 Starwood Lane, Evergreen, CO 80439 — Detached Garage - 2nd



SIZES AND DIMENSIONS ARE APPROXIMATE, ACTUAL MAY VARY.

Disclaimer: Sizes and Dimensions are Approximate, Actual May Vary.



Tonie Benetti
303-210-7336
tonie@tbkrealstate.com
<https://www.tbkrealstate.com>



1298 Starwood Lane, Evergreen, CO 80439 – All Levels



SIZES AND DIMENSIONS ARE APPROXIMATE, ACTUAL MAY VARY.

Disclaimer: Sizes and Dimensions are Approximate, Actual May Vary.



Tonie Benetti
303-210-7336
tonie@tbkrealstate.com
<https://www.tbkrealstate.com>

