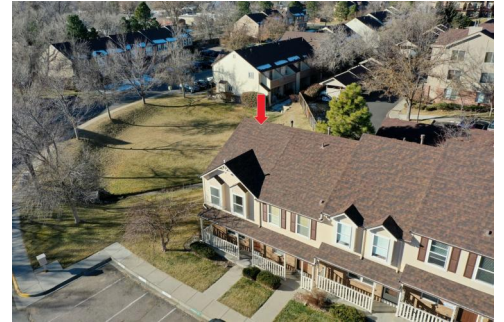





199 Pheasant Run  
Louisville, CO 80027



 Townhouse

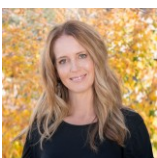
 1536 SQFT

 2 Beds

 2 Baths

## PROPERTY DETAILS

Stunning End Unit Townhome at Hunter's Ridge. Located next to community space. Cute front porch opens to Gorgeous new plank floors on main level. Open, light and bright living room and dining room. Spacious kitchen with New Microwave, appliances, and pantry. Opens to private patio and storage closet. Upstairs features vaulted ceilings and new carpet. Large master with HUGE closet, attached private master bath and private balcony. 2nd bedroom large with access to bath. Unfinished basement offers washer and dryer, great storage space or future expansion. Reserved parking. Located close to parks, trails, easy access to Boulder, RTD and downtown Louisville. Move in ready!



**Terri Ellerington**

303-929-8116

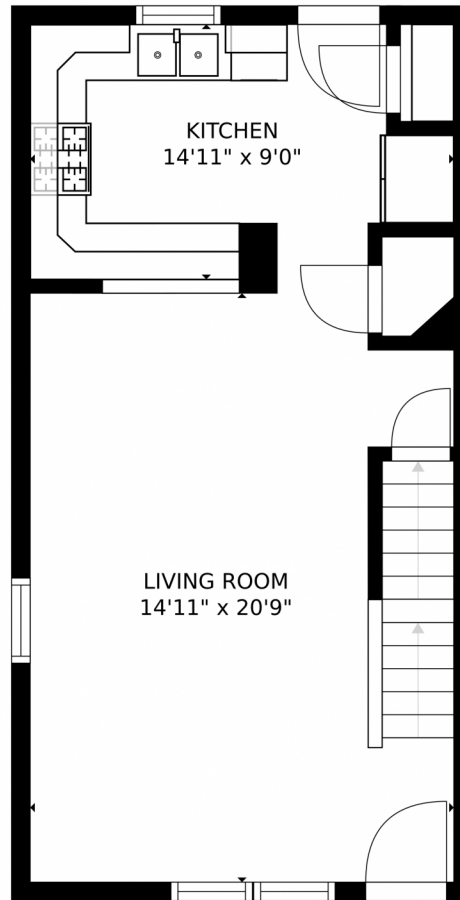
terri@elevated-team.com

<https://www.remax.com/real-estate-agents/terri-ellerington-louisville-co/10205130>

Scan code  
for more  
property  
details



199 Pheasant Run, Louisville, CO 80027 – First Floor



SIZES AND DIMENSIONS ARE APPROXIMATE, ACTUAL MAY VARY.

Disclaimer: Sizes and Dimensions are Approximate, Actual May Vary.



**Terri Ellerington**

303-929-8116

[terri@elevated-team.com](mailto:terri@elevated-team.com)

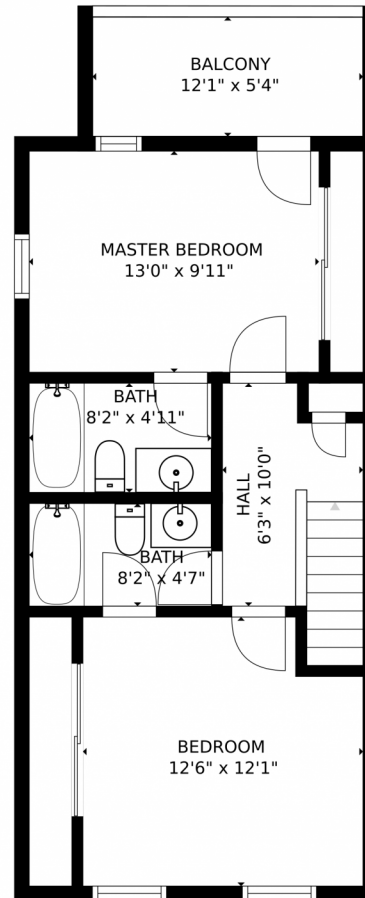
<https://www.remax.com/real-estate-agents/terri-ellerington-louisville-co/102051301>



Scan code  
for more  
property  
details



199 Pheasant Run, Louisville, CO 80027 – Second Floor



SIZES AND DIMENSIONS ARE APPROXIMATE, ACTUAL MAY VARY.

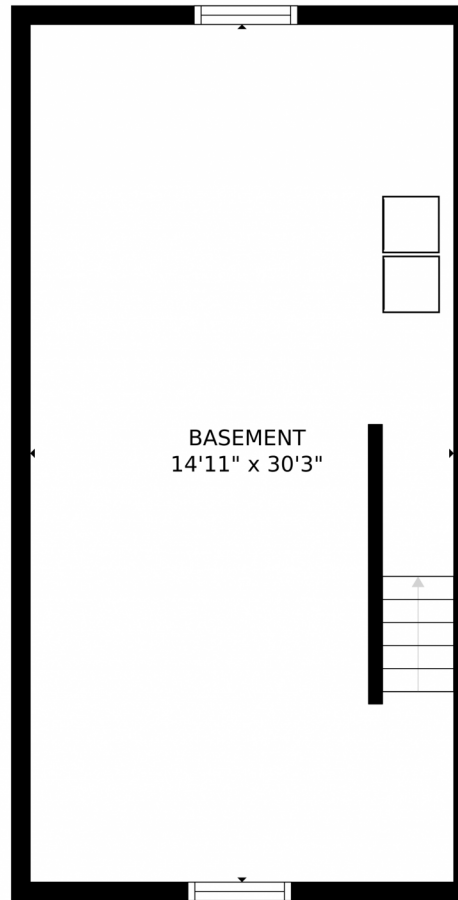
Disclaimer: Sizes and Dimensions are Approximate, Actual May Vary.



**Terri Ellerington**  
303-929-8116  
terri@elevated-team.com  
<https://www.remax.com/real-estate-agents/terri-ellerington-louisville-co/102051301>



# 199 Pheasant Run, Louisville, CO 80027 – Basement



SIZES AND DIMENSIONS ARE APPROXIMATE, ACTUAL MAY VARY.

Disclaimer: Sizes and Dimensions are Approximate, Actual May Vary.



**Terri Ellerington**

303-929-8116

terri@elevated-team.com

<https://www.remax.com/real-estate-agents/terri-ellerington-louisville-co/102051301>

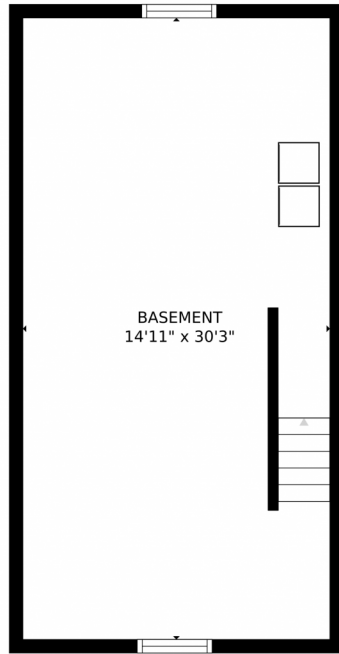


Scan code  
for more  
property  
details

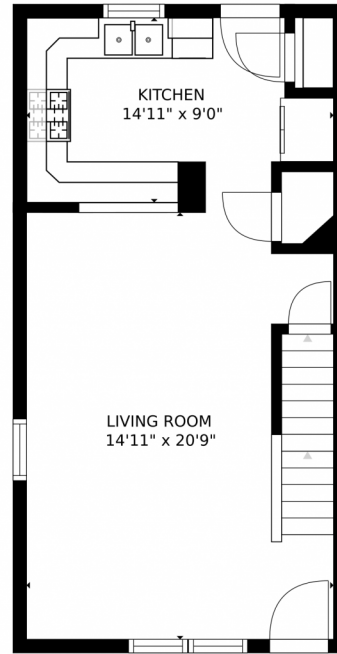




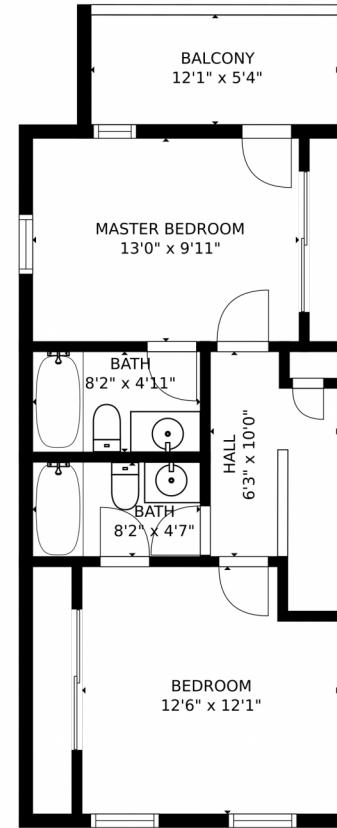
# 199 Pheasant Run, Louisville, CO 80027 – All Levels



FLOOR 1



FLOOR 2



FLOOR 3

SIZES AND DIMENSIONS ARE APPROXIMATE, ACTUAL MAY VARY.

Disclaimer: Sizes and Dimensions are Approximate, Actual May Vary.



**Terri Ellerington**

303-929-8116

terri@elevated-team.com

<https://www.remax.com/real-estate-agents/terri-ellerington-louisville-co/102051301>



Scan code  
for more  
property  
details

