



 Single Family
  3360 SQFT
  4 Beds
  3 Baths
  2 Car
  2.82 Acre

## PROPERTY DETAILS

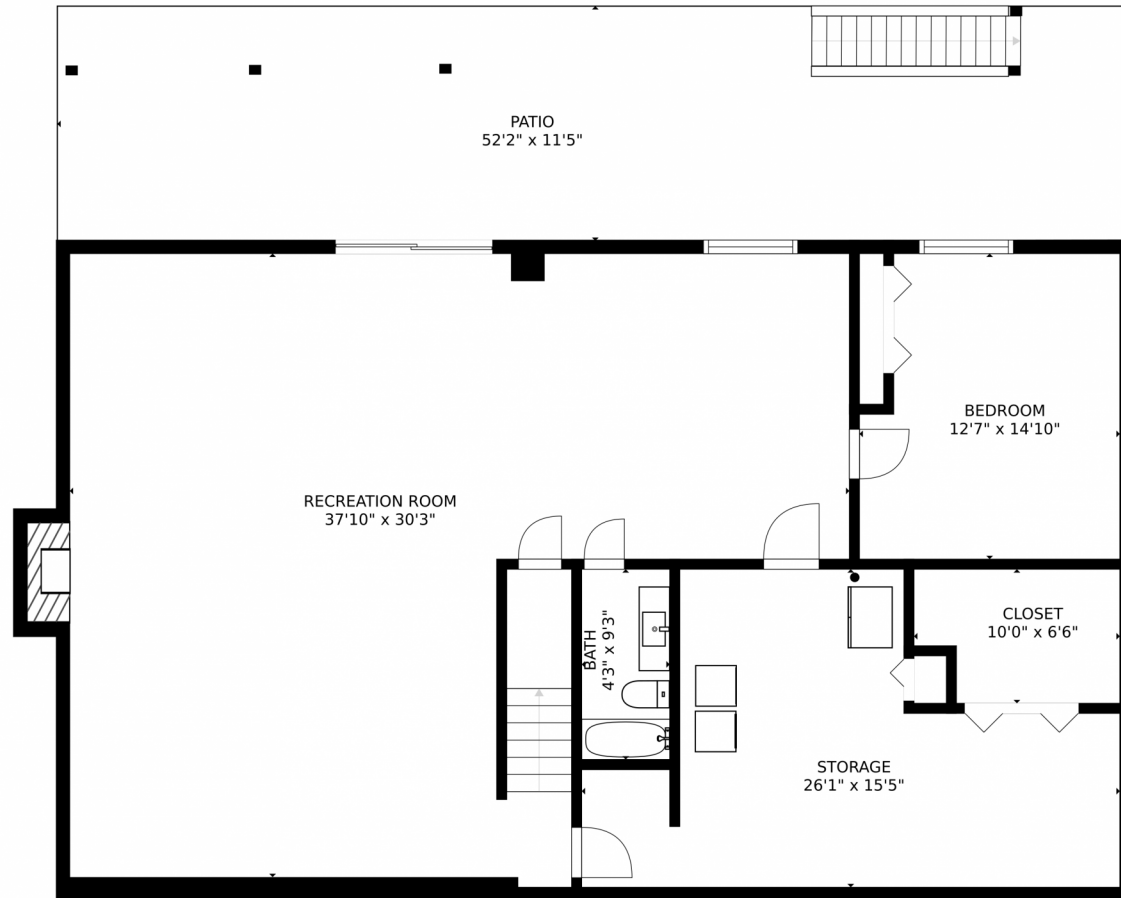
Great value on this ranch walkout on 2.82 acres with great mountain views ready for your family & home office\*Current home owners work from home and use direct link for internet\*Only 20 minutes to downtown parker and 17 minutes to Elizabeth\*Fencing is 95% complete & ready for your doggies\*The best part of this home is the main living area as it has a huge vaulted ceiling that features an oversized kitchen w/ tons of cabinets, abundant counter top space, butcher block kitchen island on wheels, long breakfast bar, hardwood floors & is completely open to your great room & dining room that also feature hardwoods\*In addition to the soaring ceilings in your great room, it also has a fire place insert that puts out great heat\*Your walkout basement has lots of additional finished open square feet with a second fireplace that is conducive to working & schooling from home



**Jodi Rae Randa**  
 720-244-1796  
[jodi@jodiranda.com](mailto:jodi@jodiranda.com)  
<https://JodiRanda.com>



2425 Holmes Court, Parker, CO 80138 – Lower Level



SIZES AND DIMENSIONS ARE APPROXIMATE, ACTUAL MAY VARY.

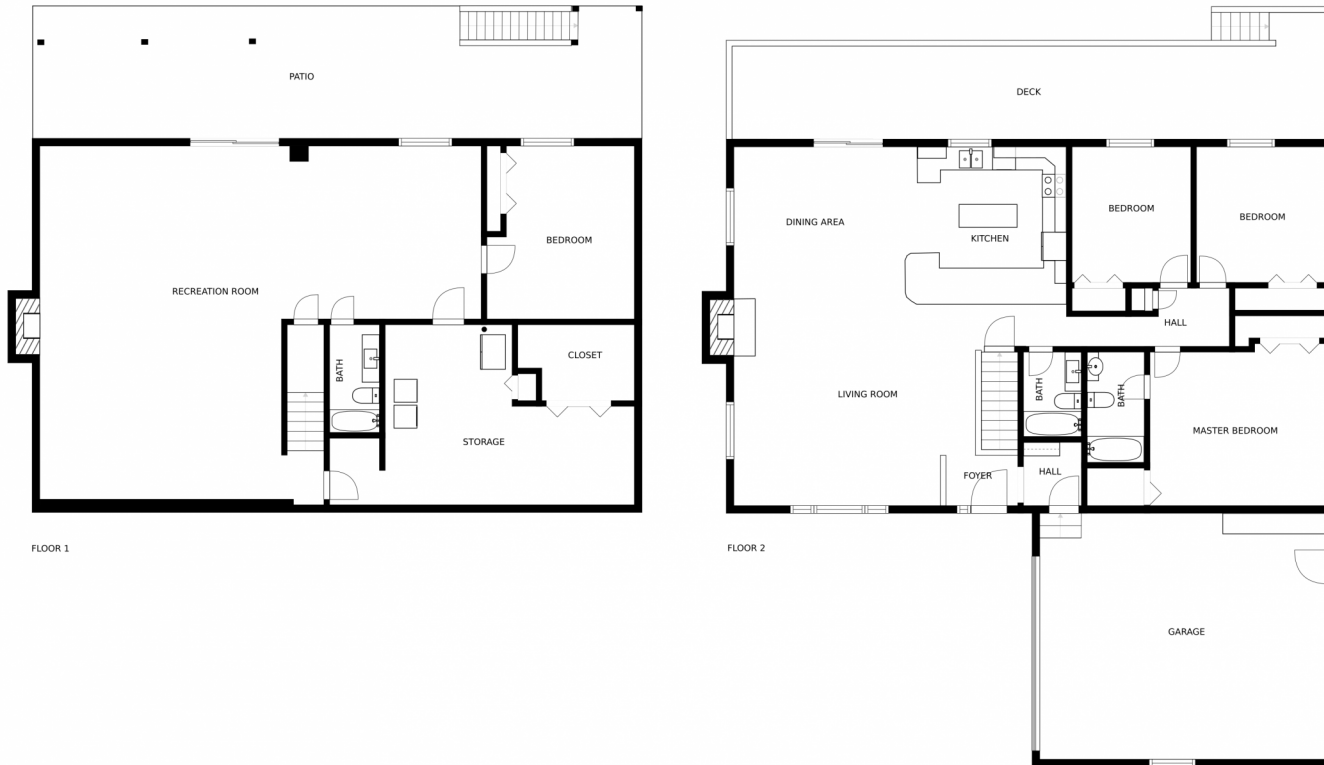
Disclaimer: Sizes and Dimensions are Approximate, Actual May Vary.



**Jodi Rae Randa**  
720-244-1796  
jodi@jodiranda.com  
<https://JodiRanda.com>



# 2425 Holmes Court, Parker, CO 80138 – All Floors



SIZES AND DIMENSIONS ARE APPROXIMATE, ACTUAL MAY VARY.

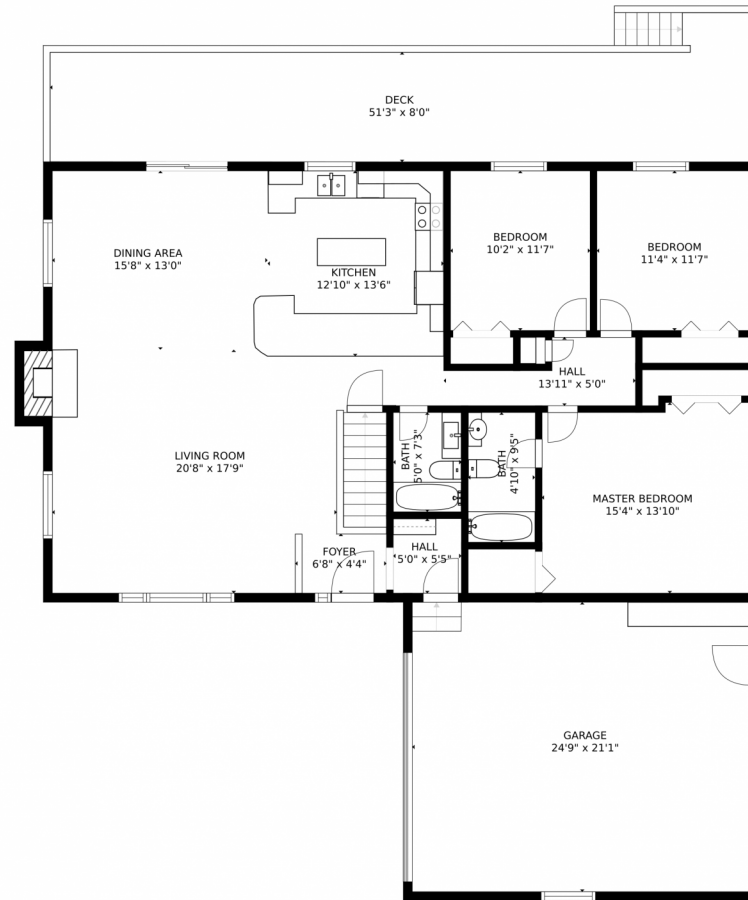
Disclaimer: Sizes and Dimensions are Approximate, Actual May Vary.



**Jodi Rae Randa**  
720-244-1796  
jodi@jodiranda.com  
<https://JodiRanda.com>



# 2425 Holmes Court, Parker, CO 80138 – Main Level



SIZES AND DIMENSIONS ARE APPROXIMATE, ACTUAL MAY VARY.

Disclaimer: Sizes and Dimensions are Approximate, Actual May Vary.



**Jodi Rae Randa**  
720-244-1796  
jodi@jodiranda.com  
<https://JodiRanda.com>

