



 Condominium  
  1390 SQFT  
  2 Beds  
  2 Baths  
  2 Car  
  0.47 Acre

## PROPERTY DETAILS

Executive Turn-Key Loft Condo in a Great LoHi Location! End unit with open floor plan, beautiful refurnished hardwood floors & high ceilings, 2 large sunny floor to ceiling Anderson sliding doors access 2 balconies with bbq gas grill hookup, patio heater and bar table with stools & stunning downtown skyline views. Entertain in the open living room with gas fireplace just off the kitchen with updated lighting, 42" maple cabinets with soft close doors, granite counters, SS appliances and pantry. Enjoy the downtown views in your spacious en-suite master bedroom/bath with large sliding door to balcony. The 2nd bedroom offers a large walk-in closet with Elfa closet system conveniently located next to the 2nd full sized bathroom with updated hardware. Many Upgrades including new interior barn style doors, new paint, new storage & laundry shelving, new water heater, new water line connections to sinks, toilets and laundry, new roof on entire complex (special assessment paid). Gated security building with 2 underground parking spots #7 & #23 & storage unit #11. Furniture negotiable-ask which pieces would not be included.

High walking-score to all the great restaurants LoHi has to offer; Linger, Little Man Ice Cream, Root Down, Tony P's, etc. Easy access over 16th Street Highland walking bridge to Union Station, 16th Street Mall, Pepsi Center, Denver Performing Arts



**Bonnie Eckert**  
 303-907-8252  
 beeckert@hotmail.com

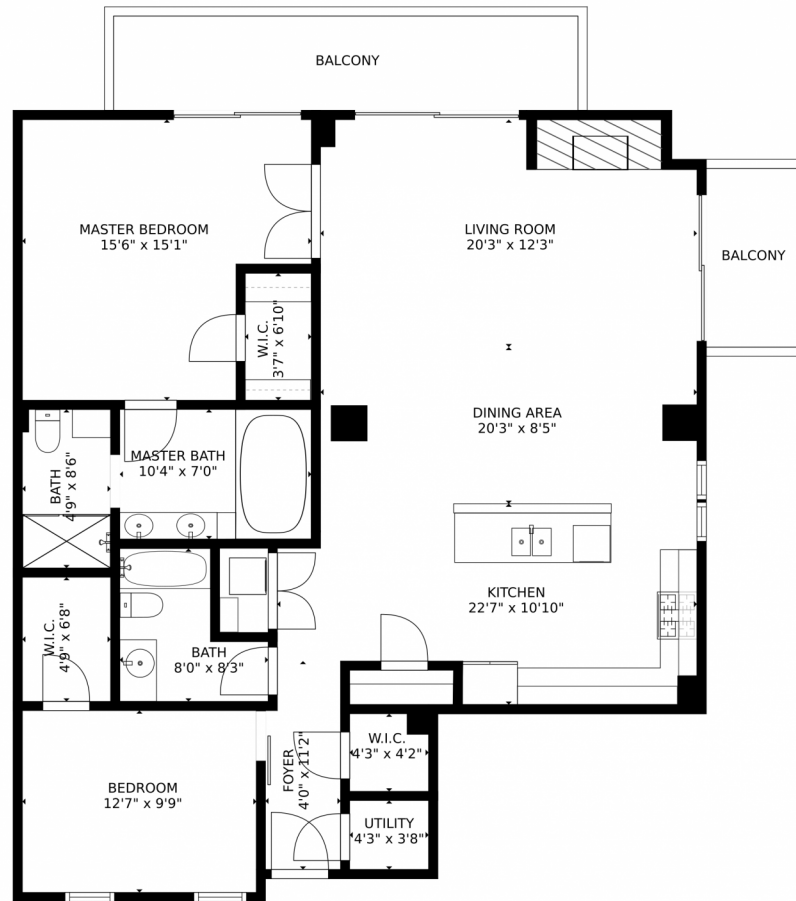


Center, Denver Convention Center and all downtown has to offer. Link to Virtual Tour: <https://vrtourhosts.com/listing/34032>



**Bonnie Eckert**  
303-907-8252  
beeckert@hotmail.com





SIZES AND DIMENSIONS ARE APPROXIMATE, ACTUAL MAY VARY.

Disclaimer: Sizes and Dimensions are Approximate, Actual May Vary.



**Bonnie Eckert**  
303-907-8252  
beeckert@hotmail.com

