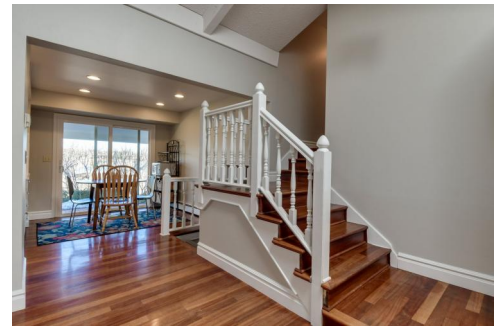




229 East 12th Avenue  
 Broomfield, CO 80020  
**COMMUNITY:** Broomfield Country Club Estates

MLS # 7105905  
 PRICE \$750,000



Single Family



2801 SQFT



3 Beds



2/1 Baths



3 Car

## PROPERTY DETAILS

LOCATION! VIEWS! PRIVACY! Solid brick split-level home, backing to Nissen Reservoir on a quiet street in Broomfield Country Club Estates. As you enter from the extended, covered front porch you will be greeted with an abundance of natural light pouring in through plentiful windows and skylights. The gleaming hardwood floors run throughout the home and are complimented by the fresh coat of modern paint on the walls. The updated kitchen features granite counters, subway tile backsplash and stainless steel appliances, including a professional grade gas range. You will instantly be drawn to sweeping views of the adjacent reservoir, golf course and mountains from the back windows and patio. On the upper level, there are 3 bedrooms and 2 full bathrooms, including a large master suite with a walk-in closet. The lower level family room offers a cozy retreat where you can curl up by the fireplace with a book, or enjoy a night in for family movie night. The bonus space in the basement is perfect for a home office, play room, or exercise area. The private 1/4 acre lot offers a fully fenced back/side yard with mature landscaping, including an apple and pear tree. Head through the back gate to a private walking path, where you can see a myriad of wildlife. This home is convenient to parks, trails, schools, golf, restaurants, and shopping. Easy access to US-36 and 287 to quickly get you to Boulder or Denver and all points in between.



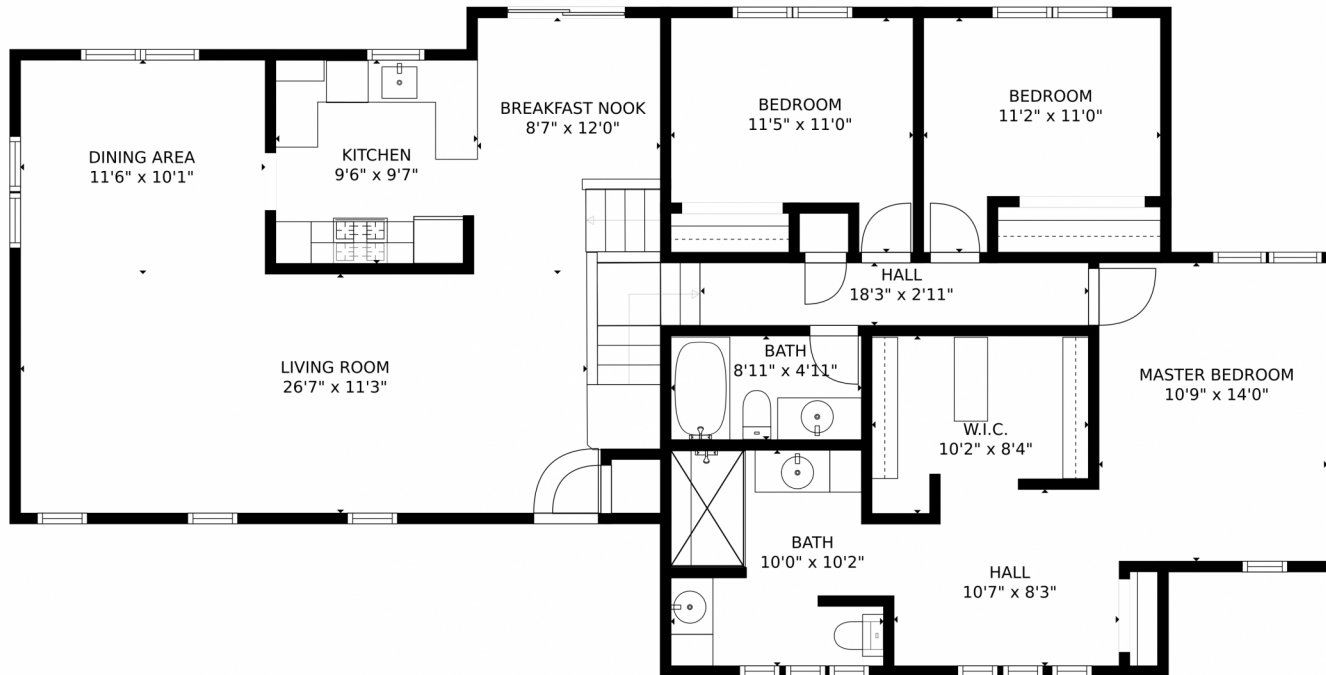
**Rebecca Buttrell**  
 303-517-4830  
 rebecca.buttrell@cbrealty.com



Scan code  
 for more  
 property  
 details



# 229 East 12th Avenue, Broomfield, CO 80020 – Main Levels



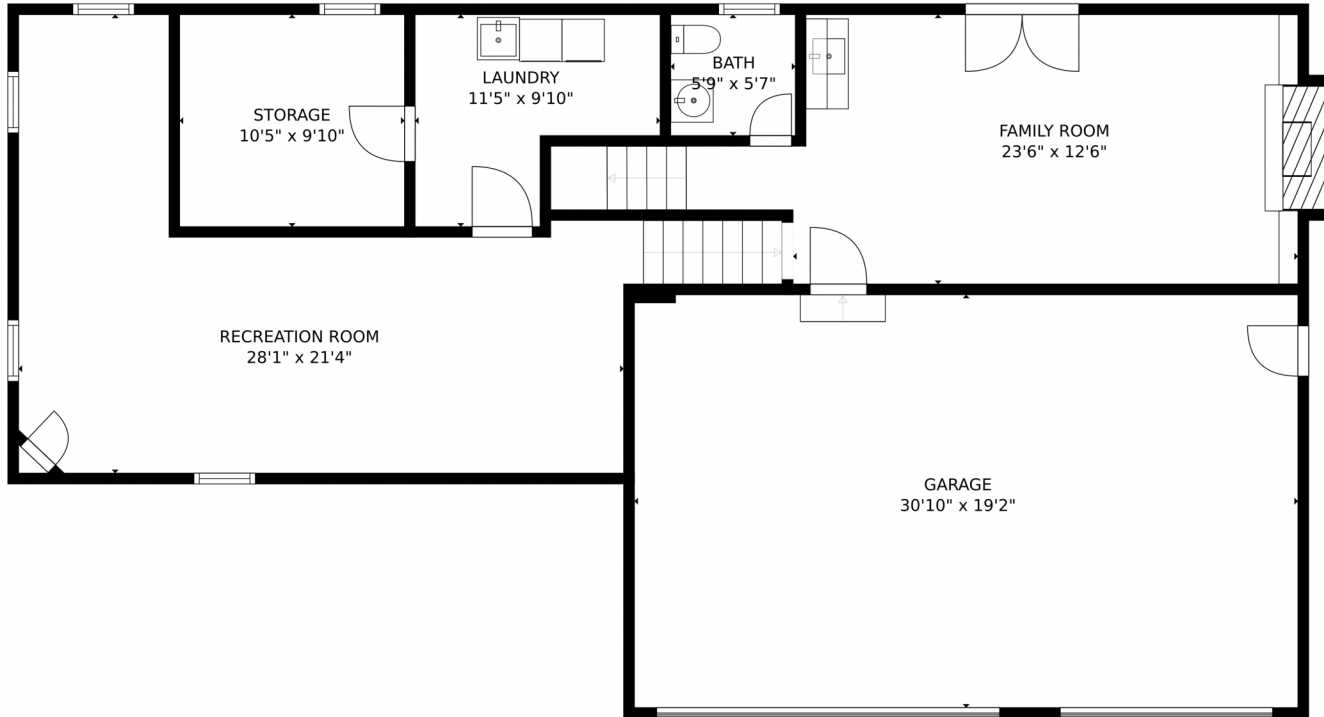
SIZES AND DIMENSIONS ARE APPROXIMATE, ACTUAL MAY VARY.

Disclaimer: Sizes and Dimensions are Approximate, Actual May Vary.



**Rebecca Buttrell**  
303-517-4830  
rebecca.buttrell@cbrealty.com





SIZES AND DIMENSIONS ARE APPROXIMATE, ACTUAL MAY VARY.

Disclaimer: Sizes and Dimensions are Approximate, Actual May Vary.

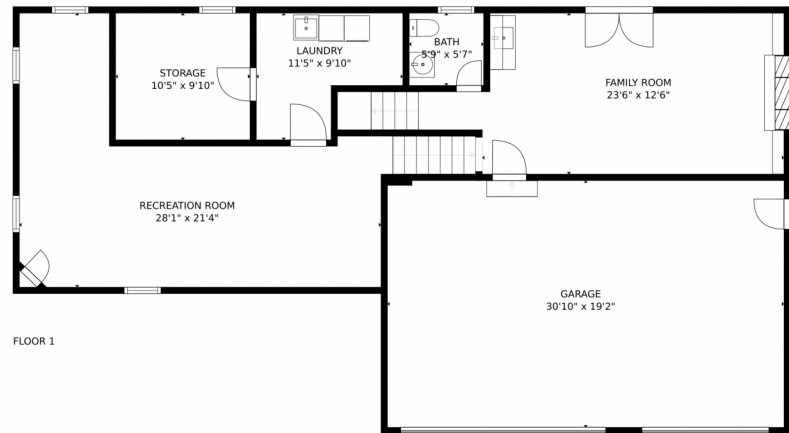
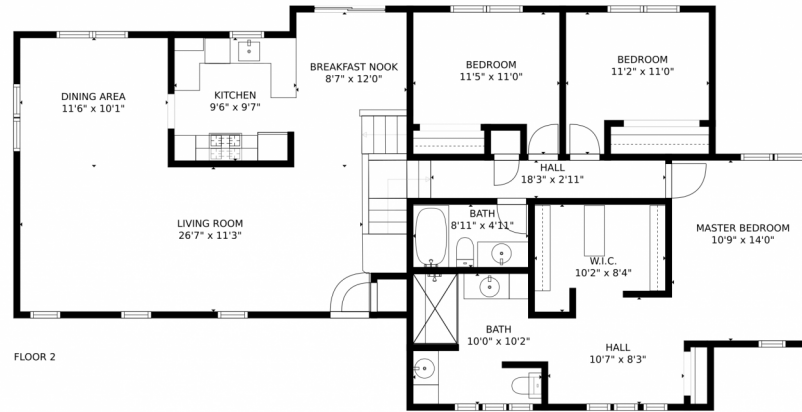


**Rebecca Buttrell**  
303-517-4830  
rebecca.buttrell@cbrealty.com



Scan code  
for more  
property  
details

# 229 East 12th Avenue, Broomfield, CO 80020 – All Levels



SIZES AND DIMENSIONS ARE APPROXIMATE, ACTUAL MAY VARY.

Disclaimer: Sizes and Dimensions are Approximate, Actual May Vary.



**Rebecca Buttrell**  
303-517-4830  
rebecca.buttrell@cbrealty.com



Scan code  
for more  
property  
details