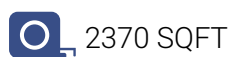
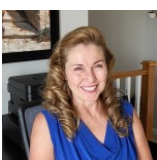


Spacious Ranch ready to move-in.



## PROPERTY DETAILS

Welcome to your new home in Meridian Ranch. This spacious contemporary home comes with 4 Bedroom and 3 full bath and features a main floor master suite w 5-piece bath and walk-in closet that is totally private on one side of the house. There is an additional bedroom/office near the front door w a full bath. The main part of the home lives large with vaulted ceilings, a great room concept w open kitchen, dining and living room area that is great for entertaining or just hanging out. The lower level features a large, oversized family/rec room with large window wells allowing natural light to flow in, two additional bedrooms w walk-in closets, a full bath plus storage space in the furnace room. Large private fenced backyard w garden beds and plenty of space for the entire family and fur babies. Backing to Londonderry Drive means no neighbors to block your view or sun light while you spend time outdoors. Better than new -- move-in ready!



**Joline Andasola**

720-936-2824

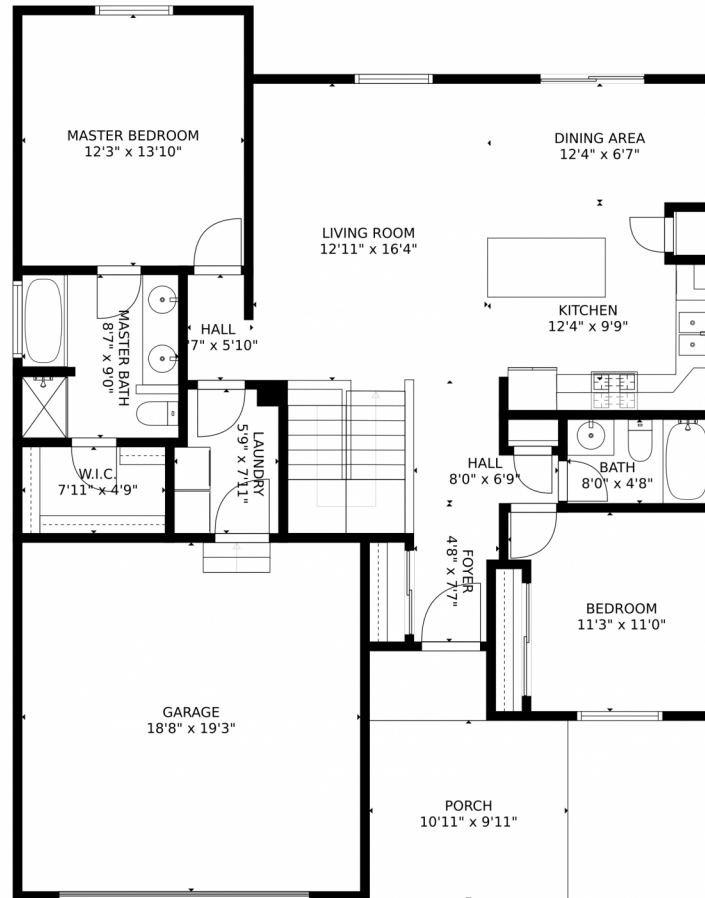
joline@co-mire.com

<https://www.facebook.com/coloradomoveinrealestate>

Scan code  
for more  
property  
details



10049 Morning Vista Drive, Peyton, CO 80831 – Main Level



SIZES AND DIMENSIONS ARE APPROXIMATE, ACTUAL MAY VARY.

Disclaimer: Sizes and Dimensions are Approximate, Actual May Vary.



**Joline Andasola**

720-936-2824

[joline@co-mire.com](mailto:joline@co-mire.com)

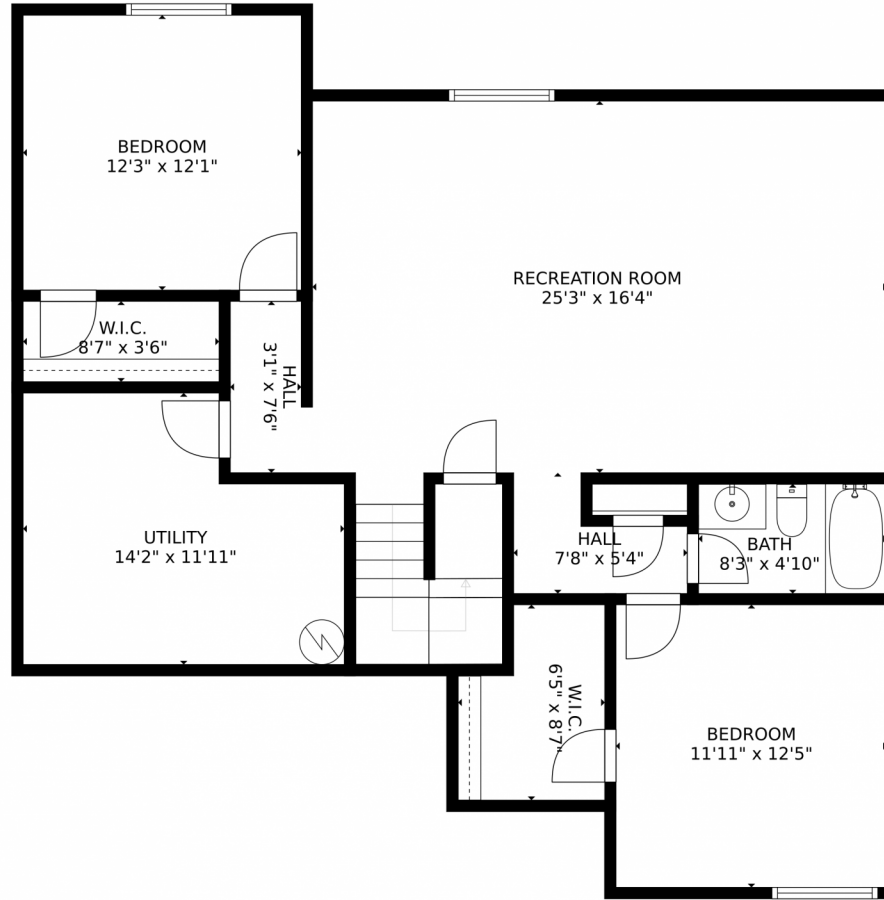
<https://www.facebook.com/coloradomoveinrealestate>



Scan code  
for more  
property  
details

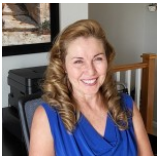


10049 Morning Vista Drive, Peyton, CO 80831 — Lower Level



SIZES AND DIMENSIONS ARE APPROXIMATE, ACTUAL MAY VARY.

Disclaimer: Sizes and Dimensions are Approximate, Actual May Vary.



**Joline Andasola**

720-936-2824

joline@co-mire.com

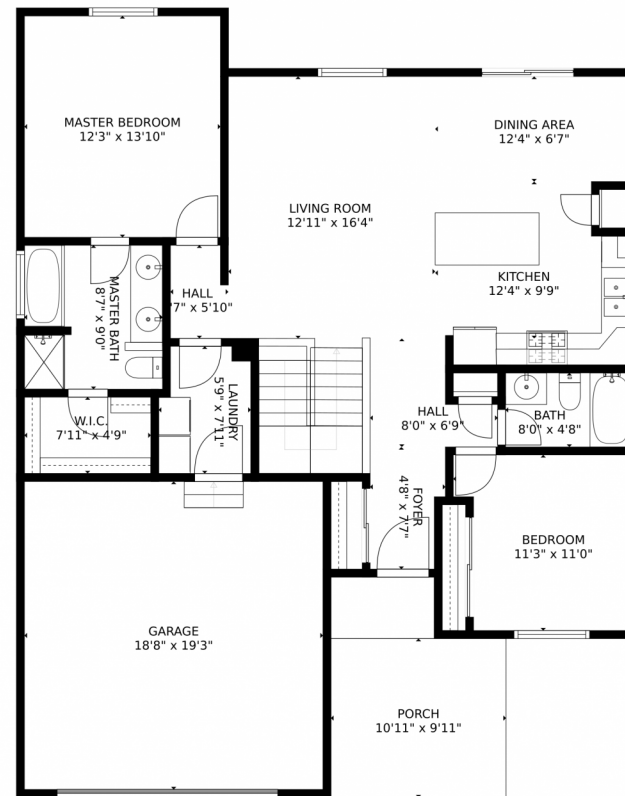
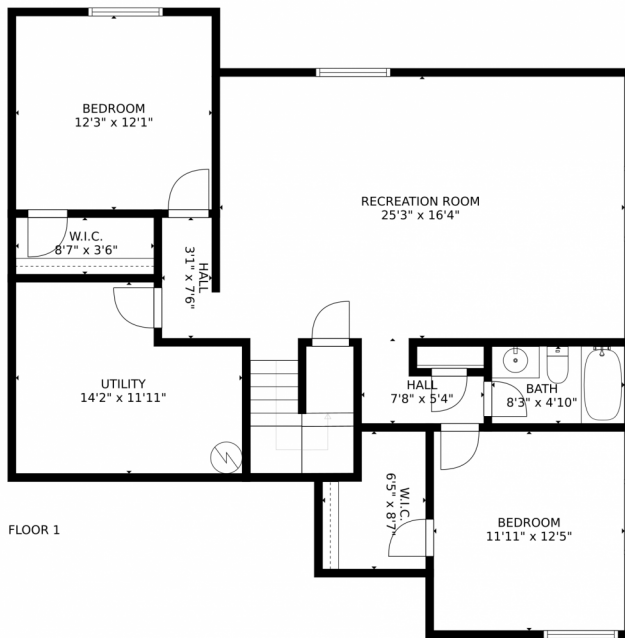
<https://www.facebook.com/coloradomoveinrealestate>



Scan code  
for more  
property  
details

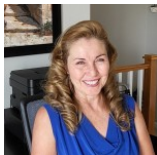


# 10049 Morning Vista Drive, Peyton, CO 80831 – All Levels



SIZES AND DIMENSIONS ARE APPROXIMATE, ACTUAL MAY VARY.

Disclaimer: Sizes and Dimensions are Approximate, Actual May Vary.



**Joline Andasola**

720-936-2824

[joline@co-mire.com](mailto:joline@co-mire.com)

<https://www.facebook.com/coloradomoveinrealestate>



Scan code  
for more  
property  
details

