




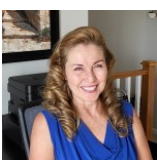
 Single Family
  1580 SQFT
  3 Beds
  2 Baths
  1 Car
  0 Acre

PROPERTY DETAILS

This spacious all brick Ranch sits on the corner of MLK and Newport on a 12,400 Sq Ft lot.

This home features 2 bedrooms and full bath, kitchen, dining and living room with original hardwood floors on the main floor plus an attached 1-car garage. There is a non-conforming 3rd bedroom with attached ¾ bath plus a huge family/rec room downstairs.

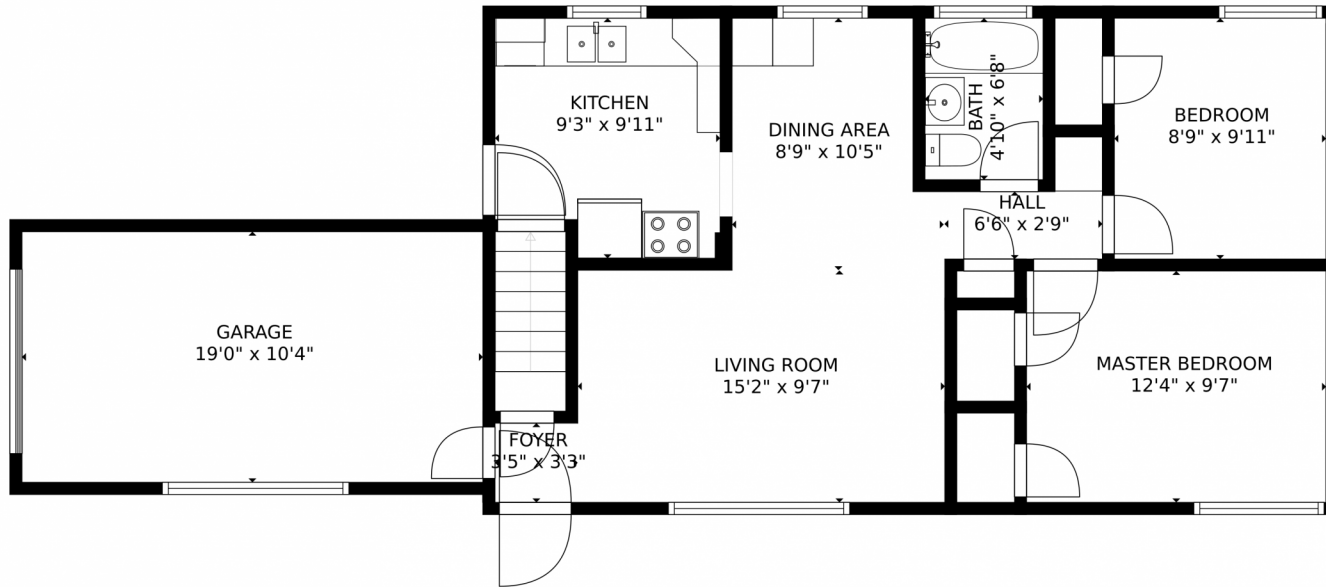
Property is being sold As-is, but consider the possibilities: this could be a fantastic opportunity for new homebuyer looking for some sweat equity, Or the investor or developer looking for their next project. Zoned E-SU-G. Just think of the possibilities!



Joline Andasola
720-936-2824
joline@co-mire.com
<https://www.facebook.com/coloradomoveinrealestate>

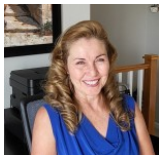


6802 Martin Luther King Junior Boulevard, Denver, CO 80207 – First Floor



SIZES AND DIMENSIONS ARE APPROXIMATE, ACTUAL MAY VARY.

Disclaimer: Sizes and Dimensions are Approximate, Actual May Vary.



Joline Andasola

720-936-2824

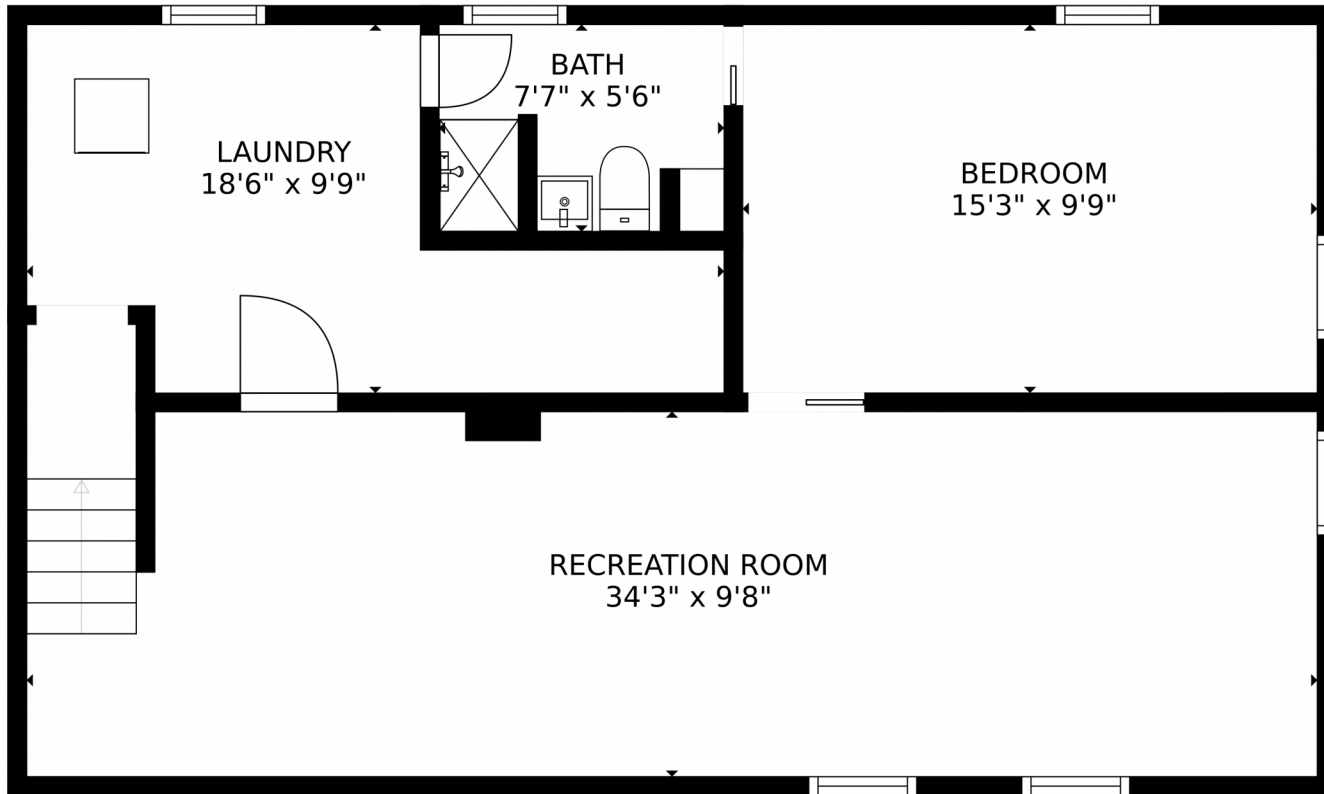
joline@co-mire.com

<https://www.facebook.com/coloradomoveinrealestate>



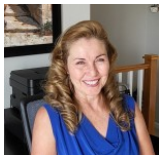
Scan code
for more
property
details





SIZES AND DIMENSIONS ARE APPROXIMATE, ACTUAL MAY VARY.

Disclaimer: Sizes and Dimensions are Approximate, Actual May Vary.



Joline Andasola

720-936-2824

joline@co-mire.com

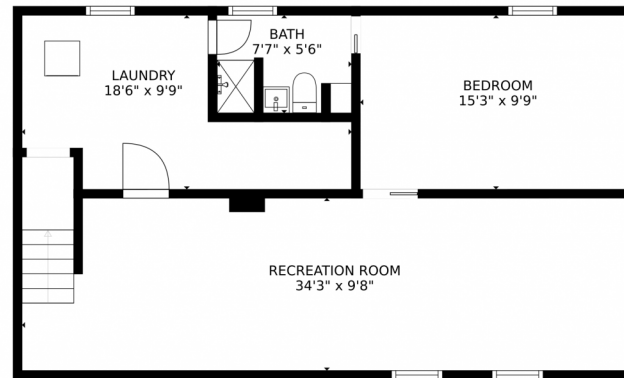
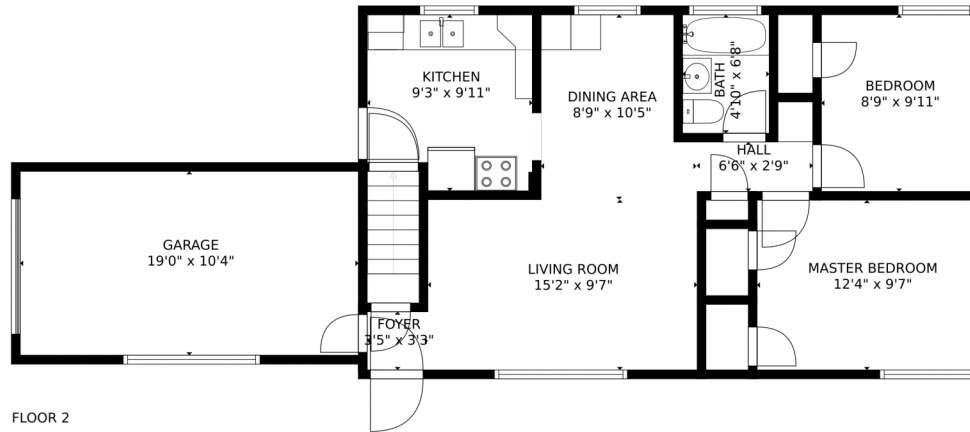
<https://www.facebook.com/coloradomoveinrealestate>



Scan code
for more
property
details

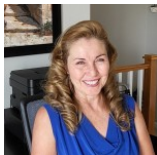


6802 Martin Luther King Junior Boulevard, Denver, CO 80207 – All Floors



SIZES AND DIMENSIONS ARE APPROXIMATE, ACTUAL MAY VARY.

Disclaimer: Sizes and Dimensions are Approximate, Actual May Vary.



Joline Andasola

720-936-2824

joline@co-mire.com

<https://www.facebook.com/coloradomoveinrealestate>



Scan code
for more
property
details