

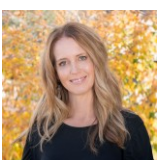
## Beautiful Duplex in Fox Run



Townhouse 2012 SQFT 3 Beds 2/1 Baths 2 Car

## PROPERTY DETAILS

Beautiful Duplex in Fox Run! Inviting front porch, open floor plan w/ spacious kitchen, S/S appl., new counters, large open dining & family room. Master on the main level w/ master bath & large walk in closet. New carpet. Large laundry room w/ W&D. Upstairs boasts 2 large bedrooms w/ tons of natural light, great closet space & full bathroom. Attached 2 car garage, unfinished basement perfect for future expansion or storage. Stunning deck with private yard. Fresh paint, carpet, garage door opener, it's ready to move in. Close to shops, light rail and restaurants.



**Terri Ellerington**

303-929-8116

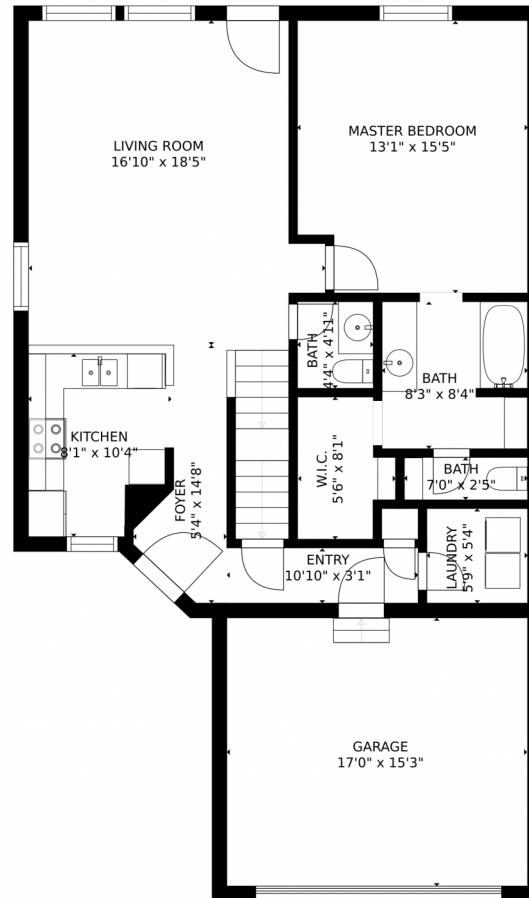
terri@elevated-team.com

<https://www.remax.com/real-estate-agents/terri-ellerington-louisville-co/10205130>

Scan code  
for more  
property  
details



3189 East 106th Avenue, Northglenn, CO 80233 – First Floor



SIZES AND DIMENSIONS ARE APPROXIMATE, ACTUAL MAY VARY.

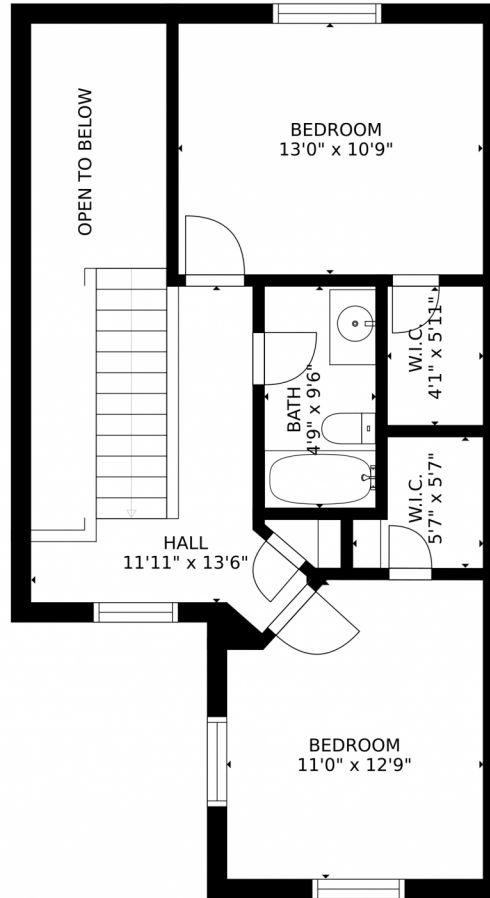
Disclaimer: Sizes and Dimensions are Approximate, Actual May Vary.



**Terri Ellerington**  
303-929-8116  
terri@elevated-team.com  
<https://www.remax.com/real-estate-agents/terri-ellerington-louisville-co/102051301>



3189 East 106th Avenue, Northglenn, CO 80233 – Second Floor



SIZES AND DIMENSIONS ARE APPROXIMATE, ACTUAL MAY VARY.

Disclaimer: Sizes and Dimensions are Approximate, Actual May Vary.



**Terri Ellerington**

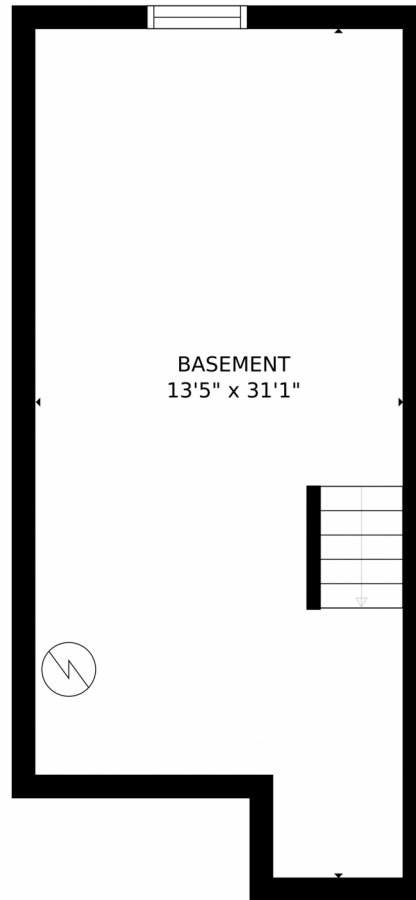
303-929-8116

terri@elevated-team.com

<https://www.remax.com/real-estate-agents/terri-ellerington-louisville-co/102051301>



Scan code  
for more  
property  
details



SIZES AND DIMENSIONS ARE APPROXIMATE, ACTUAL MAY VARY.

Disclaimer: Sizes and Dimensions are Approximate, Actual May Vary.



**Terri Ellerington**

303-929-8116

terri@elevated-team.com

<https://www.remax.com/real-estate-agents/terri-ellerington-louisville-co/102051301>



Scan code  
for more  
property  
details



3189 East 106th Avenue, Northglenn, CO 80233 – All Floors



SIZES AND DIMENSIONS ARE APPROXIMATE, ACTUAL MAY VARY.

Disclaimer: Sizes and Dimensions are Approximate, Actual May Vary.



**Terri Ellerington**

303-929-8116

terri@elevated-team.com

<https://www.remax.com/real-estate-agents/terri-ellerington-louisville-co/102051301>



Scan code  
for more  
property  
details

