





8348 Ouray Drive  
Longmont, CO 80503


MLS # 937515  
PRICE \$2,950,000



 Single Family

 3678 SQFT

 2 Car

 51.54 Acre

## PROPERTY DETAILS

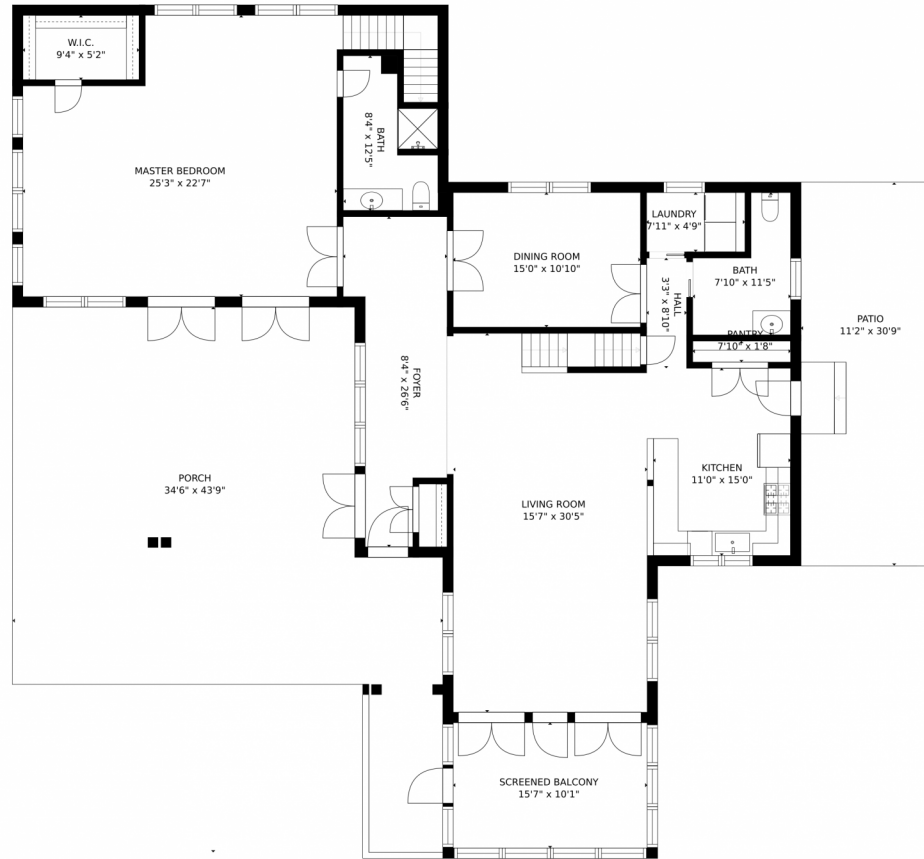
This remodeled farmhouse on 52 acres is nestled in a stand of mature trees and perfectly situated to take in the gorgeous views of the rolling farmland and Haystack Mountain. The views are protected by conservation easements on the neighboring properties so they will remain unchanged. The two-bedroom, three-bathroom, 2-car garage home is on two levels, with the master suite on the main level. The open-beam family room is situated on the east side of the house with an adjoining screened porch that looks out over the expansive property. The farm has excellent water rights of 25 Left Hand Ditch shares and a storage pond covering 1.5 acres.



**Karen Libin**  
303-444-3177  
team@krealty.net  
<https://krealty.net/>



# 8348 Ouray Drive, Longmont, CO 80503 – Main



GROSS INTERNAL AREA  
FLOOR 1: 442 sq. ft, FLOOR 2: 1888 sq. ft  
FLOOR 3: 837 sq. ft, EXCLUDED AREAS:  
GARAGE: 528 sq. ft, PATIO: 343 sq. ft  
PORCH: 984 sq. ft  
TOTAL: 3167 sq. ft  
SIZES AND DIMENSIONS ARE APPROXIMATE, ACTUAL MAY VARY.

Disclaimer: Sizes and Dimensions are Approximate, Actual May Vary.



**Karen Libin**  
303-444-3177  
team@krealty.net  
<https://krealty.net/>



Scan code  
for more  
property  
details

8348 Ouray Drive, Longmont, CO 80503 – 2nd Level



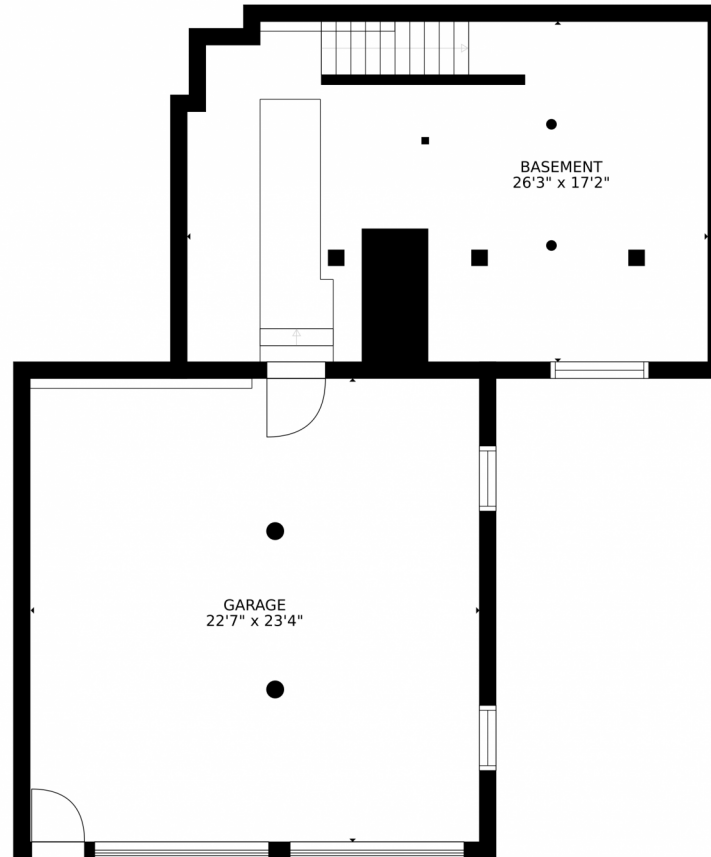
GROSS INTERNAL AREA  
FLOOR 1: 442 sq. ft, FLOOR 2: 1888 sq. ft  
FLOOR 3: 837 sq. ft, EXCLUDED AREAS:  
GARAGE: 528 sq. ft, PATIO: 343 sq. ft  
PORCH: 984 sq. ft  
TOTAL: 3167 sq. ft  
SIZES AND DIMENSIONS ARE APPROXIMATE, ACTUAL MAY VARY.

Disclaimer: Sizes and Dimensions are Approximate, Actual May Vary.



**Karen Libin**  
303-444-3177  
team@klrealty.net  
<https://klrealty.net/>





GROSS INTERNAL AREA  
FLOOR 1: 442 sq. ft. FLOOR 2: 1888 sq. ft.  
FLOOR 3: 837 sq. ft. EXCLUDED AREAS:  
GARAGE: 528 sq. ft. PATIO: 343 sq. ft.  
PORCH: 984 sq. ft.  
TOTAL: 3167 sq. ft.  
SIZES AND DIMENSIONS ARE APPROXIMATE, ACTUAL MAY VARY.

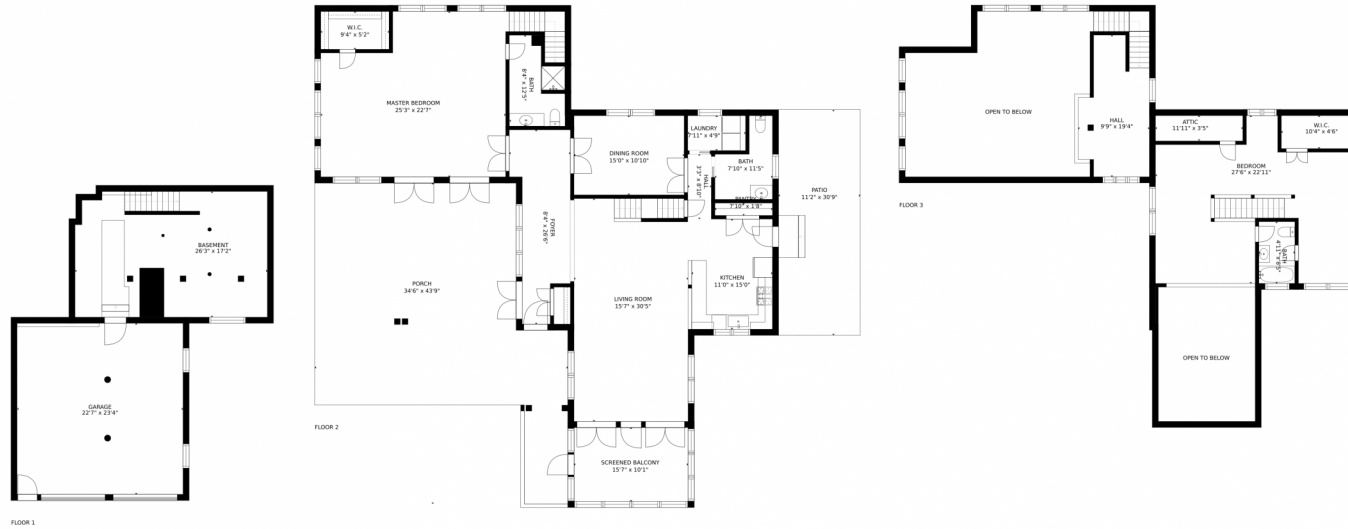
Disclaimer: Sizes and Dimensions are Approximate, Actual May Vary.



**Karen Libin**  
303-444-3177  
team@klrealty.net  
<https://klrealty.net/>



# 8348 Ouray Drive, Longmont, CO 80503 – All Levels



GROSS INTERNAL AREA  
FLOOR 1: 442 sq. ft. FLOOR 2: 1888 sq. ft.  
FLOOR 3: 837 sq. ft. EXCLUDED AREAS:  
GARAGE: 528 sq. ft. PATIO: 343 sq. ft.  
PORCH: 984 sq. ft.  
TOTAL: 3167 sq. ft.  
SIZES AND DIMENSIONS ARE APPROXIMATE, ACTUAL MAY VARY.

Disclaimer: Sizes and Dimensions are Approximate, Actual May Vary.



**Karen Libin**  
303-444-3177  
team@krealty.net  
<https://krealty.net/>

