



 Single Family
  2178 SQFT
  3 Beds
  3 Baths
  2 Car
  0.75 Acre

PROPERTY DETAILS

Built in 2005, this home is exceptionally clean, used only as a mountain getaway on weekends and holidays. With exceptional views of Mt. Rosalie & Mt. Logan, this home is bright and airy, with vaulted ceilings and a wall of windows leading out to your deck. The main level includes the living room with gas fireplace, kitchen with hardwood floors, pantry, tons of cabinetry, and a spacious dining area, large master suite including a jetted tub and walk-in closet. A guest bedroom and another full bath are also located on the main level. The lower level includes a family room, large bedroom (or home office?) with walk-in closet and adjoining full bath, laundry room, and access to the 2-car oversized garage. Behind the home is a large storage barn with concrete floor and storage above. The gently sloping lot has aspens, pines, and plenty of room for your critters! The home sits on a county maintained road, less than a 2 minute walk from Pike National Forest & Slaughterhouse Trailhead for easy access



Carrie Baldwin
 303-885-5118
 cjb@carriebaldwin.com



to great hiking, fishing and a host of outdoor activities. Home Warranty included with purchase.



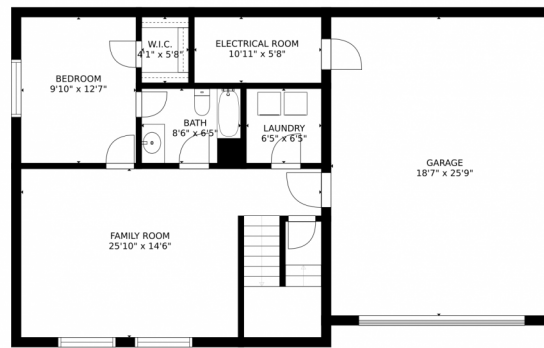
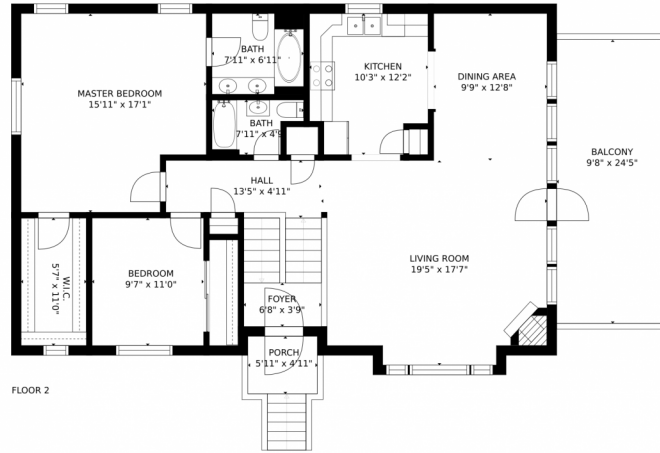
Carrie Baldwin
303-885-5118
cjb@carriebaldwin.com



Scan code
for more
property
details



489 Saddlestring Road, Bailey, CO 80421 – All Levels



SIZES AND DIMENSIONS ARE APPROXIMATE, ACTUAL MAY VARY.

Disclaimer: Sizes and Dimensions are Approximate, Actual May Vary.



Carrie Baldwin
303-885-5118
cjb@carriebaldwin.com



Scan code
for more
property
details