



Single Family



2327 SQFT



3 Beds



3 Baths



2 Car



1.42 Acre

PROPERTY DETAILS

Beautiful mountain home on 1.42 acres, completely remodeled in 2013

*Vaulted Ceilings *Master Suite *Granite Countertops *Stainless Steel Appliances *Deck with Mountain Views
*Walkout Basement *Oversized 2-Car Garage *Domestic Well *Easy Access from Hwy 285, on a Bus Route

Don't miss this gem!



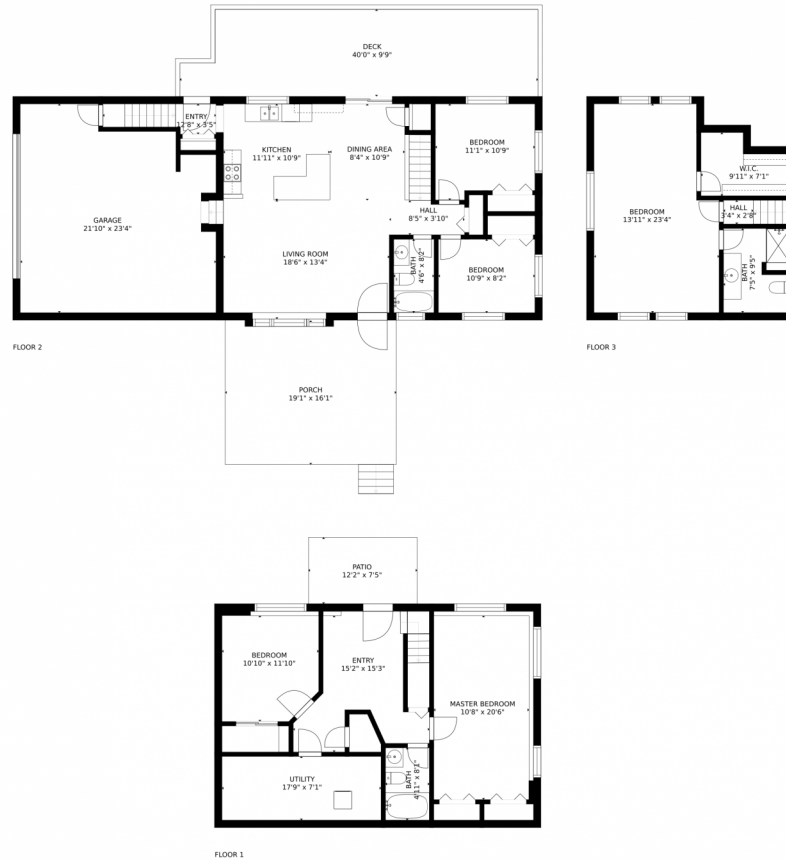
Carrie Baldwin
303-885-5118
cjb@carriebaldwin.com



Scan code
for more
property
details



33753 Smith Road, Pine, CO 80470 – All Levels



GROSS INTERNAL AREA
FLOOR 1: 811 sq. ft. FLOOR 2: 863 sq. ft.
FLOOR 3: 464 sq. ft. EXCLUDED AREAS:
PATIO: 90 sq. ft. DECK: 365 sq. ft.
PORCH: 308 sq. ft. GARAGE: 449 sq. ft.
TOTAL: 2138 sq. ft.
SIZES AND DIMENSIONS ARE APPROXIMATE, ACTUAL MAY VARY.

Disclaimer: Sizes and Dimensions are Approximate, Actual May Vary.



Carrie Baldwin
303-885-5118
cjb@carriebaldwin.com



Scan code
for more
property
details