



5241 South Eaton Park Way
Aurora, CO 80016

COMMUNITY: Toll Gate Crossing

MLS # 3390725

PRICE \$829,000



Single Family



6128 SQFT



5 Beds



4/1 Baths



3 Car



0.17 Acre

PROPERTY DETAILS

Gorgeous Home on a Corner Lot original owner, Backs to Open Space. Located in the prestigious Toll Gate Crossing within Cherry Creek Schools. Close to community pool, shopping, restaurants, near Elementary and Middle School, new park across the street, Water feature and pond, Stamped concrete edging, New Landscaping, artificial grass in the back yard, exterior lighting, new exterior and interior paint through out. This home has 5 bedrooms, 4 full bathrooms, giant loft area, spacious master retreat, plenty of extra space and storage, porcelain tile throughout the main level, surround sound, all Energy Efficient LED Lighting throughout, hardwood flooring, radon mitigation, dual HVAC, large finished and insulated garage The Basement is Over 2,000 square feet of space ready for your finishes.



Julie Leins

720-474-0928

julieleins@kw.com

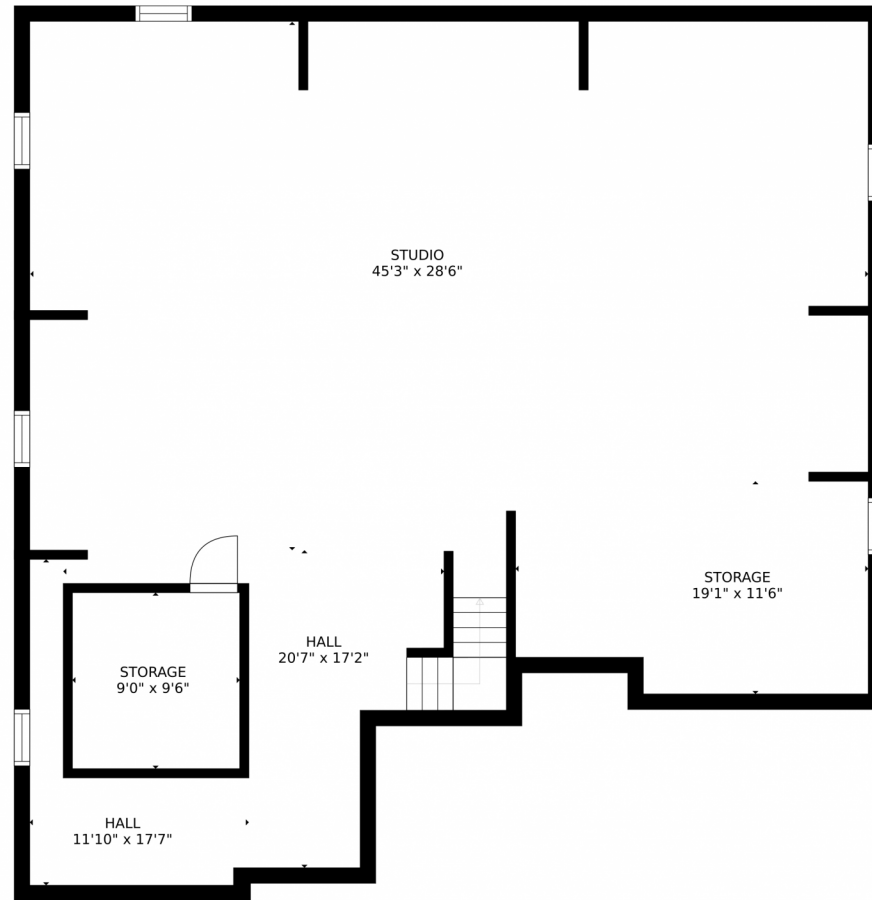
<https://coloradohomesdreamteam.com>



Scan code
for more
property
details



5241 South Eaton Park Way, Aurora, CO 80016 – Lower Level



SIZES AND DIMENSIONS ARE APPROXIMATE, ACTUAL MAY VARY.

Disclaimer: Sizes and Dimensions are Approximate, Actual May Vary.



Julie Leins

720-474-0928

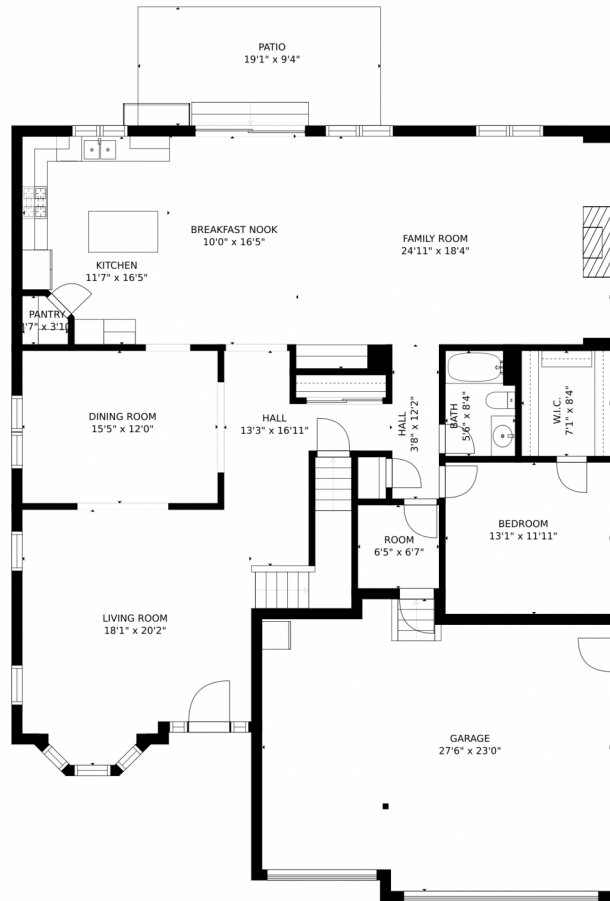
julieleins@kw.com

<https://coloradohomesdreamteam.com>



Scan code
for more
property
details

5241 South Eaton Park Way, Aurora, CO 80016 – Main Level



SIZES AND DIMENSIONS ARE APPROXIMATE, ACTUAL MAY VARY.

Disclaimer: Sizes and Dimensions are Approximate, Actual May Vary.



Julie Leins

720-474-0928

julieleins@kw.com

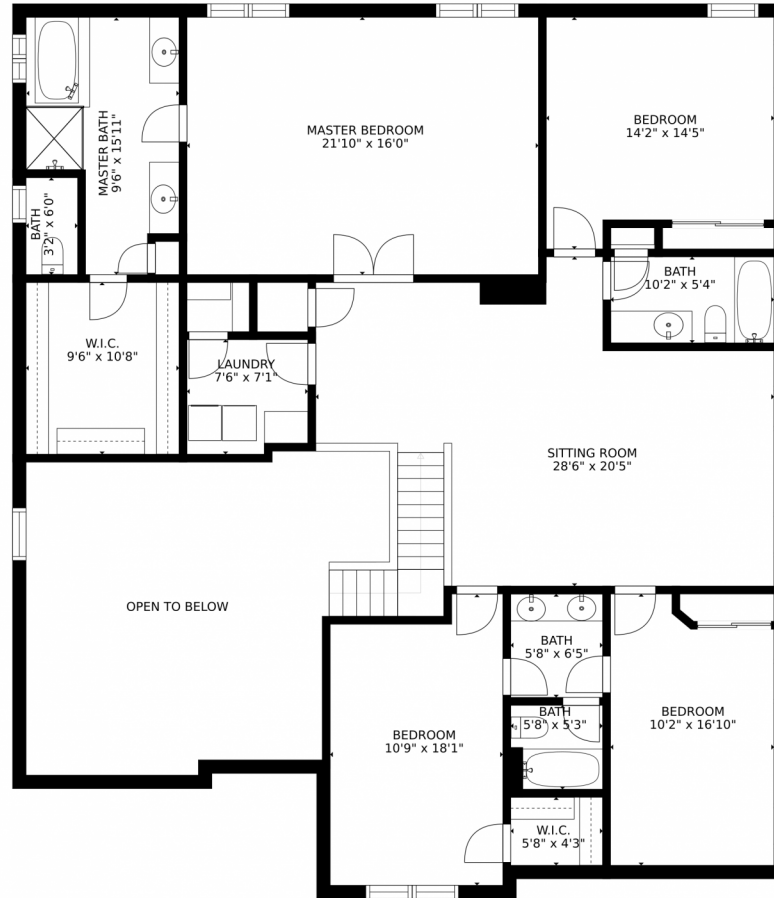
<https://coloradohomesdreamteam.com>



Scan code
for more
property
details



5241 South Eaton Park Way, Aurora, CO 80016 – 2nd Story



SIZES AND DIMENSIONS ARE APPROXIMATE, ACTUAL MAY VARY.

Disclaimer: Sizes and Dimensions are Approximate, Actual May Vary.



Julie Leins

720-474-0928

julieleins@kw.com

<https://coloradohomesdreamteam.com>



Scan code
for more
property
details



5241 South Eaton Park Way, Aurora, CO 80016 – All Floors



SIZES AND DIMENSIONS ARE APPROXIMATE, ACTUAL MAY VARY.

Disclaimer: Sizes and Dimensions are Approximate, Actual May Vary.



Julie Leins
720-474-0928
julieleins@kw.com
<https://coloradohomesdreamteam.com>



Scan code
for more
property
details