



Single Family



3208 SQFT



3 Beds



2/1 Baths



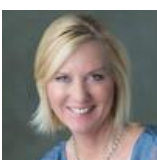
2 Car



1.4 Acre

PROPERTY DETAILS

Lovely mountain contemporary with a mid century flare, main level living at its finest on 1.4 flat acres with outstanding views of the Gorgeous Mount Rosalie & Mount Epaulet connected to the massive Mount Evans, offering peace and serenity but convenience! Far enough from the hum drum but minutes away from town, walking distance to King Murphy school & just close enough to all amenities. Walk into high vaulted ceilings loaded with beams and floor to ceiling generous windows in living room with views of your acreage offering sweeping views of mountains, cozy wood burning fire place loaded with mid century rock & wrap around decks for star gazing, easy flow to generous dining room drenched with sun and views, double sliding glass doors with easy access to exterior to your fully wrap around composite deck generous in size & ideal for entertaining, kitchen is right off dining area loaded with granite and honey maple cabinets offering another exterior private deck perfect for bbq's & perfect for jacuzzi nights. 3 beds, 3 baths with private & generous first floor master situated in the back of the home for privacy filled with floor to ceiling windows, drenched in sunshine, sweeping views, freshly painted, attached master bath and nice walk in closet. Slip down to lower level complete with 2 generous size guest rooms with their own entrances and patio, loaded with southern exposure, remodeled guest bath and lovely additional large home & and or



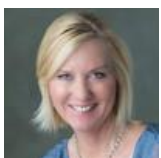
Tracy Molleur
 303-408-2059
 tracy@molleur.com



Scan code
 for more
 property
 details



extra family room/den filled with windows overlooking your property with amazing tree line views. This home is gently lived in, has lots of extra parking and long private drive way in the mountains of lovely Evergreen Colorado. Come soak up the sun on the sundrenched multiple decks looking at the mountains! So much to love.



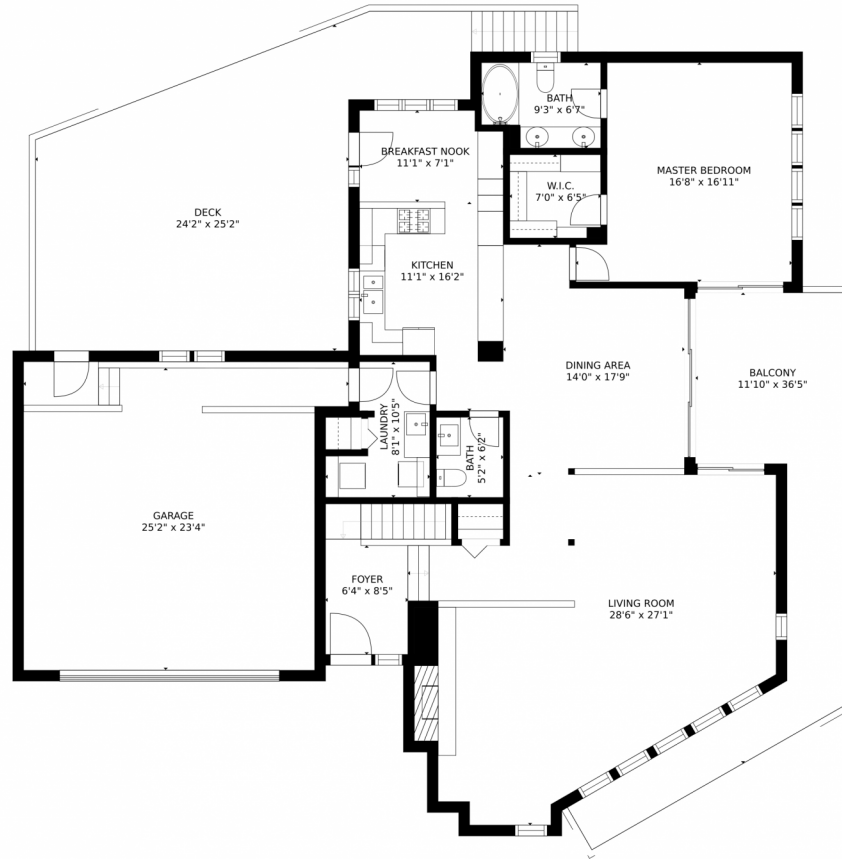
Tracy Molleur
303-408-2059
tracy@molleur.com



Scan code
for more
property
details



104 Fir Lane, Evergreen, CO 80439 – Main



GROSS INTERNAL AREA
FLOOR 1: 1538 sq. ft. FLOOR 2: 1639 sq. ft.
EXCLUDED AREAS: , PATIO: 130 sq. ft.
BALCONY: 323 sq. ft. DECK: 572 sq. ft.
GARAGE: 546 sq. ft.
TOTAL: 3177 sq. ft.
SIZES AND DIMENSIONS ARE APPROXIMATE, ACTUAL MAY VARY.

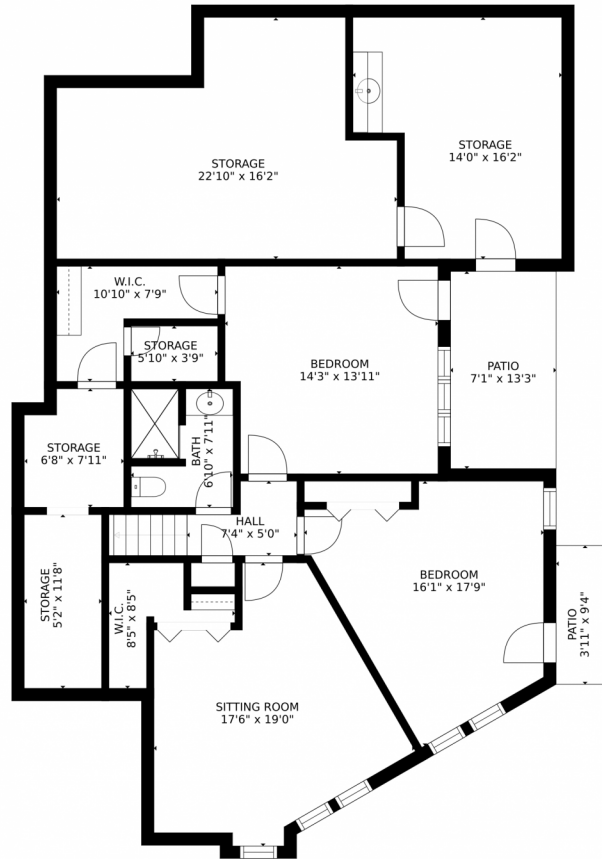
Disclaimer: Sizes and Dimensions are Approximate, Actual May Vary.



Tracy Molleur
303-408-2059
tracy@molleur.com



104 Fir Lane, Evergreen, CO 80439 – Lower Level



GROSS INTERNAL AREA
FLOOR 1: 1538 sq. ft. FLOOR 2: 1639 sq. ft
EXCLUDED AREAS: , PATIO: 130 sq. ft
BALCONY: 323 sq. ft. DECK: 572 sq. ft
GARAGE: 546 sq. ft
TOTAL: 3177 sq. ft
SIZES AND DIMENSIONS ARE APPROXIMATE, ACTUAL MAY VARY.

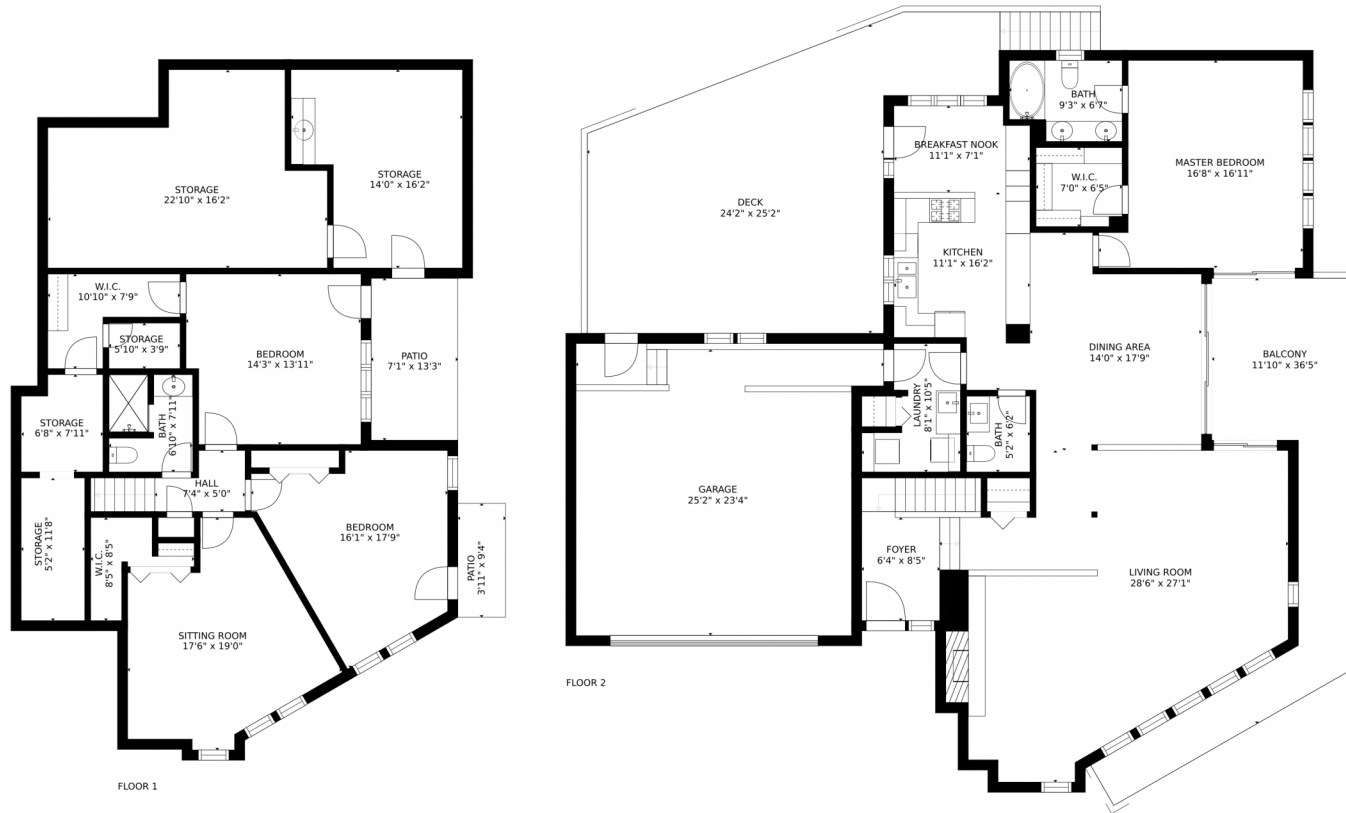
Disclaimer: Sizes and Dimensions are Approximate, Actual May Vary.



Tracy Molleur
303-408-2059
tracy@molleur.com



104 Fir Lane, Evergreen, CO 80439 – All Levels



GROSS INTERNAL AREA
FLOOR 1: 1538 sq. ft. FLOOR 2: 1639 sq. ft.
EXCLUDED AREAS: , PATIO: 130 sq. ft.
BALCONY: 323 sq. ft. DECK: 572 sq. ft.
GARAGE: 546 sq. ft.
TOTAL: 3177 sq. ft.
SIZES AND DIMENSIONS ARE APPROXIMATE, ACTUAL MAY VARY.

Disclaimer: Sizes and Dimensions are Approximate, Actual May Vary.



Tracy Molleur
303-408-2059
tracy@molleur.com

