



Multi Family 1996 SQFT 3 Beds 3/1 Baths 2 Car 0.09 Acre

PROPERTY DETAILS

Welcome to this gorgeous sun-drenched paired home, extensively upgraded like a model built by KB Home in 2019! This townhome lives like a single-family home with the convenience of a low maintenance community. Gorgeous luxury vinyl wood floors greet you and high ceilings grace the home. Daily living is wonderful and easy in this open floor plan boasting a gourmet kitchen with stunning island counter, subway tile backsplash, upgraded 42" shaker cabinets with crown molding, upgraded stainless steel appliances including gas range, abundant counter space and seating, a generous pantry, and open dining area. The bright airy living room invites you outside to the private patio with over \$11k in finishes including a two-tone poured stamped concrete deck, a motorized retractable awning, full privacy fencing, and no maintenance turf! Upstairs the impressive primary suite has a large walk-in closet, a serene en-suite lux bathroom with sparkling glass walk-in shower featuring a bench seat, dual sinks and storage closet. Two roomy secondary bedrooms flank a loft area used as an exercise room, and hall bath across from the laundry. Pleated blinds throughout, some top-down/bottom-up, some dual light filtering/blackout in the bedrooms, with modern filtering ones on the patio sliding doors. The oversize two car garage provides storage in addition to the crawl space. Take advantage of the community with an array of wonderful amenities from nearby parks and trails to



Kristy Bierhaus
303-378-5141
kristybierhaus@gmail.com



dining and shopping, and quick access to Denver and Colorado Springs. A 10+ must-see gem you will want to call home, so schedule your showing soon before it is gone!



Kristy Bierhaus
303-378-5141
kristybierhaus@gmail.com



3018 Low Meadow Boulevard, Castle Rock, CO 80109 – All Levels



GROSS INTERNAL AREA
FLOOR 1: 854 sq. ft, FLOOR 2: 1039 sq. ft
EXCLUDED AREAS: , PATIO: 368 sq. ft
PORCH: 41 sq. ft, GARAGE: 370 sq. ft
TOTAL: 1894 sq. ft
SIZES AND DIMENSIONS ARE APPROXIMATE, ACTUAL MAY VARY.

Disclaimer: Sizes and Dimensions are Approximate, Actual May Vary.

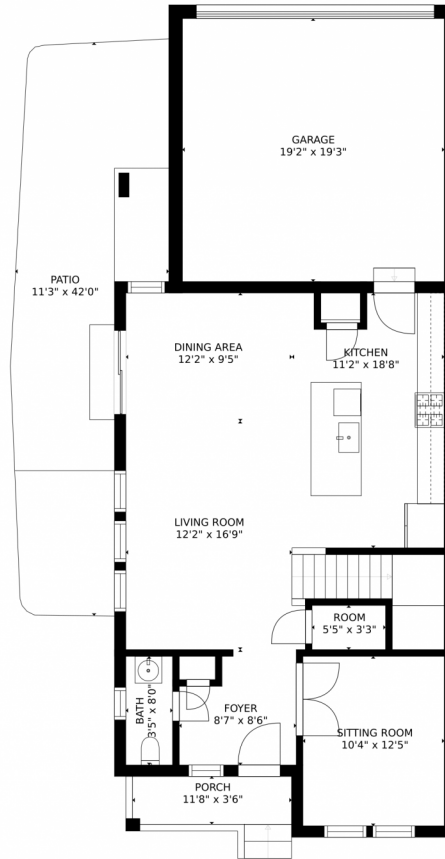


Kristy Bierhaus
303-378-5141
kristybierhaus@gmail.com



Scan code
for more
property
details

3018 Low Meadow Boulevard, Castle Rock, CO 80109 – Main Level



GROSS INTERNAL AREA
FLOOR 1: 854 sq. ft, FLOOR 2: 1039 sq. ft
EXCLUDED AREAS: , PATIO: 368 sq. ft
PORCH: 41 sq. ft, GARAGE: 370 sq. ft
TOTAL: 1894 sq. ft
SIZES AND DIMENSIONS ARE APPROXIMATE, ACTUAL MAY VARY.

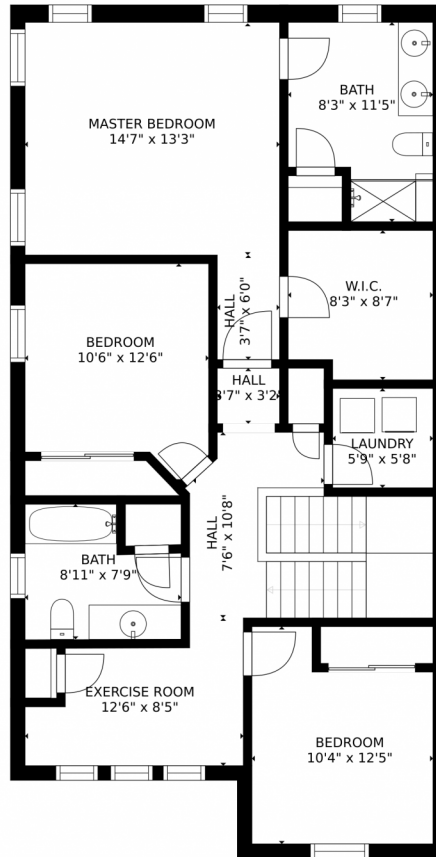
Disclaimer: Sizes and Dimensions are Approximate, Actual May Vary.



Kristy Bierhaus
303-378-5141
kristybierhaus@gmail.com



3018 Low Meadow Boulevard, Castle Rock, CO 80109 – 2nd Level



GROSS INTERNAL AREA
FLOOR 1: 854 sq. ft, FLOOR 2: 1039 sq. ft
EXCLUDED AREAS: , PATIO: 368 sq. ft
PORCH: 41 sq. ft, GARAGE: 370 sq. ft
TOTAL: 1894 sq. ft
SIZES AND DIMENSIONS ARE APPROXIMATE, ACTUAL MAY VARY.

Disclaimer: Sizes and Dimensions are Approximate, Actual May Vary.



Kristy Bierhaus
303-378-5141
kristybierhaus@gmail.com

