



3157 West Clyde Place
Denver, CO 80211



Single Family



4000 SQFT

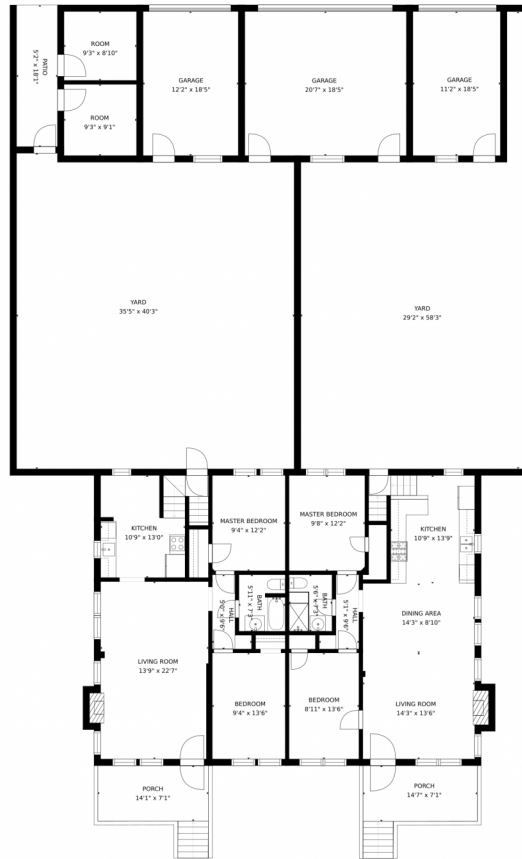
Rick Weibel
303-907-8840
rick@thedenverproperties.com



Scan code
for more
property
details



3157 West Clyde Place, Denver, CO 80211 – Main



GROSS INTERNAL AREA
FLOOR 1: 1641 sq. ft, FLOOR 2: 1906 sq. ft
EXCLUDED AREAS: , DECK: 89 sq. ft
PATIO: 95 sq. ft, PORCH: 240 sq. ft
GARAGE: 806 sq. ft
TOTAL: 3547 sq. ft
SIZES AND DIMENSIONS ARE APPROXIMATE, ACTUAL MAY VARY.

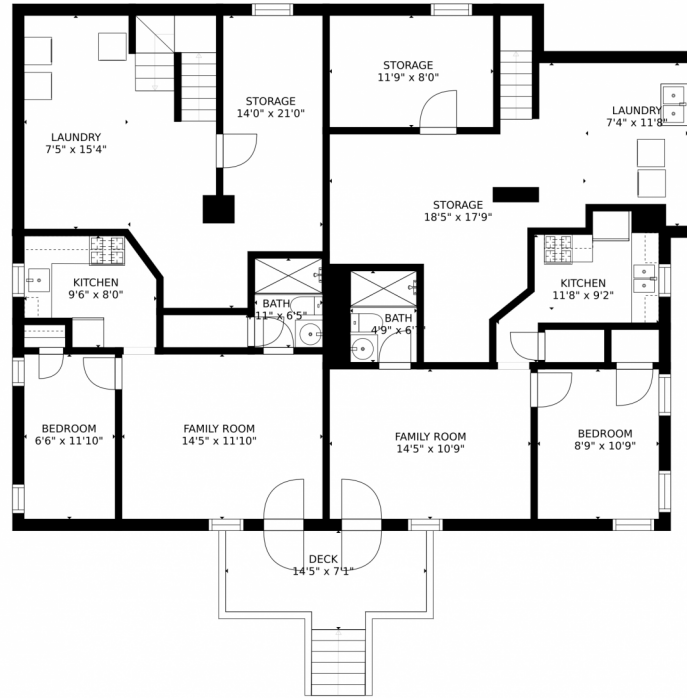
Disclaimer: Sizes and Dimensions are Approximate, Actual May Vary.

Rick Weibel
303-907-8840
rick@thedenverproperties.com



Scan code
for more
property
details

3157 West Clyde Place, Denver, CO 80211 – Lower Level



GROSS INTERNAL AREA
FLOOR 1: 1641 sq. ft, FLOOR 2: 1906 sq. ft
EXCLUDED AREAS: , DECK: 89 sq. ft
PATIO: 95 sq. ft, PORCH: 240 sq. ft
GARAGE: 806 sq. ft
TOTAL: 3547 sq. ft
SIZES AND DIMENSIONS ARE APPROXIMATE, ACTUAL MAY VARY.

Disclaimer: Sizes and Dimensions are Approximate, Actual May Vary.

Rick Weibel
303-907-8840
rick@thedenverproperties.com



3157 West Clyde Place, Denver, CO 80211 — All Levels



GROSS INTERNAL AREA
FLOOR 1: 1641 sq. ft, FLOOR 2: 1906 sq. ft
EXCLUDED AREAS: , DECK: 89 sq. ft
PATIO: 95 sq. ft, PORCH: 240 sq. ft
GARAGE: 806 sq. ft
TOTAL: 3547 sq. ft
SIZES AND DIMENSIONS ARE APPROXIMATE, ACTUAL MAY VARY.

Disclaimer: Sizes and Dimensions are Approximate, Actual May Vary.

Rick Weibel
303-907-8840
rick@thedenverproperties.com

