



Single Family



1927 SQFT



**Taylor Haas**

303-665-7368

taylorh@coloradorpm.com

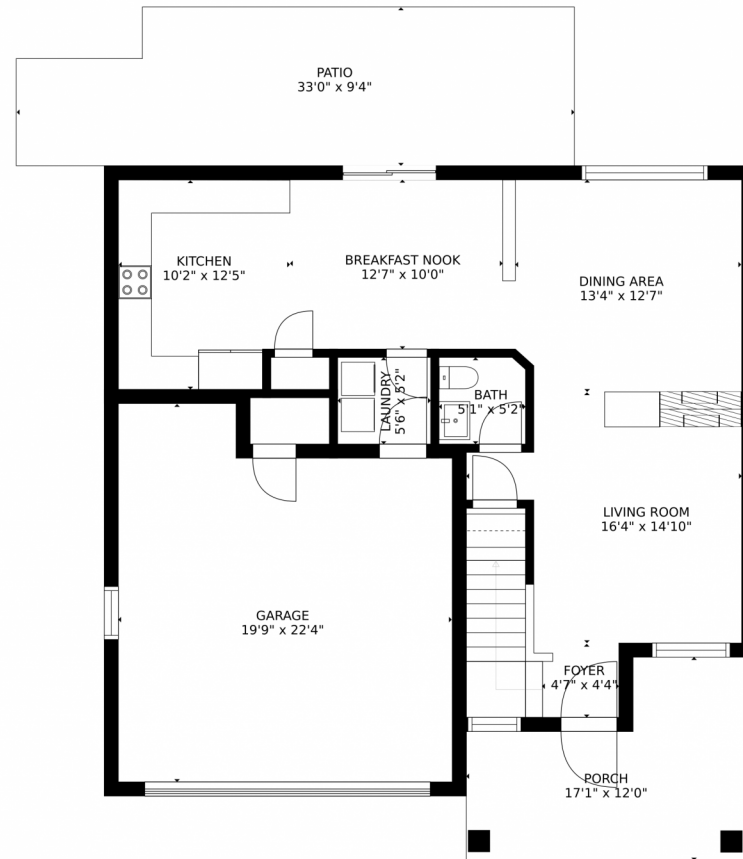
<https://www.coloradorpm.com/available-rental-properties-denver>



Scan code  
for more  
property  
details



# 7376 South Nucla Street, Aurora, CO 80016 – Main Level



GROSS INTERNAL AREA  
FLOOR 1: 784 sq. ft, FLOOR 2: 1019 sq. ft  
EXCLUDED AREAS: , PATIO: 288 sq. ft  
PORCH: 163 sq. ft, GARAGE: 402 sq. ft  
TOTAL: 1803 sq. ft  
SIZES AND DIMENSIONS ARE APPROXIMATE, ACTUAL MAY VARY.

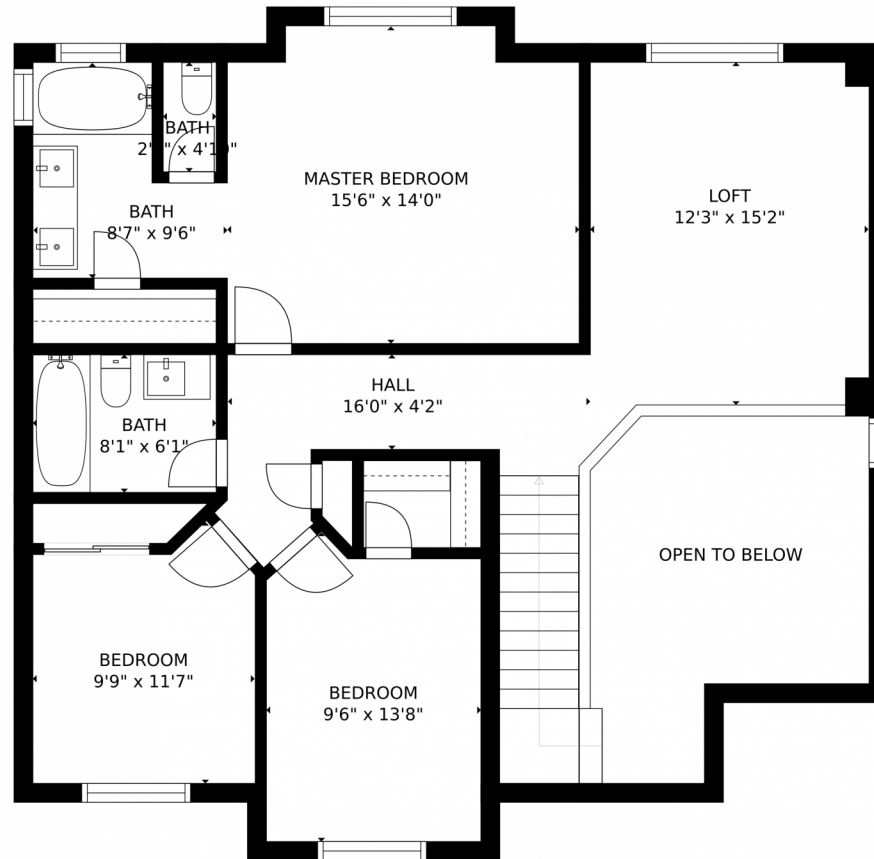
Disclaimer: Sizes and Dimensions are Approximate, Actual May Vary.



**Taylor Haas**  
303-665-7368  
taylorh@coloradorpm.com  
<https://www.coloradorpm.com/available-rental-properties-denver>



7376 South Nucla Street, Aurora, CO 80016 – 2nd Story



GROSS INTERNAL AREA  
FLOOR 1: 784 sq. ft, FLOOR 2: 1019 sq. ft  
EXCLUDED AREAS: , PATIO: 288 sq. ft  
PORCH: 163 sq. ft, GARAGE: 402 sq. ft  
TOTAL: 1803 sq. ft  
SIZES AND DIMENSIONS ARE APPROXIMATE, ACTUAL MAY VARY.

Disclaimer: Sizes and Dimensions are Approximate, Actual May Vary.



**Taylor Haas**  
303-665-7368  
taylorh@coloradorpm.com  
<https://www.coloradorpm.com/available-rental-properties-denver>



# 7376 South Nucla Street, Aurora, CO 80016 – All Floors



SIZES AND DIMENSIONS ARE APPROXIMATE, ACTUAL MAY VARY.

Disclaimer: Sizes and Dimensions are Approximate, Actual May Vary.



**Taylor Haas**  
303-665-7368  
taylorh@coloradorpm.com  
<https://www.coloradorpm.com/available-rental-properties-denver>

