



13416 Kuehster Road  
 Littleton, CO 80127  
 COMMUNITY: Deer Creek

MLS # 2663279  
 PRICE \$925,000



Single Family



2906 SQFT



4 Beds



4/1 Baths



2 Car



35 Acre

## PROPERTY DETAILS

Professional photos will be added Friday. Welcome home to majestic mountain living! 35 acres of privacy, pines and views! The moment you step in you will fall in love, sweeping views, beautiful natural light, open and bright! The kitchen boasts an INCREDIBLE island, so much space for eating, prepping, playing, or just visiting. The slab will wow you! Notice the additional cabinetry, a place for everything! Beverage refrigerator included in the island. Beautiful stainless gas stove, with combo electric oven, the perfect delight for cooking. Bask in the views from the kitchen, great room and master. So much to love here; on the deck you'll find a retractable awning, on the grounds you'll have something for everyone; a playset, a firepit, terraced front yard area, and lovely porch, flagstone, so much to appreciate! Back inside, the main floor boasts 2 great bedrooms, and an updated hall bath, as well as a lovely powder bath. The lower level features a flex space, use for a 4th non-conforming bedroom if you'd like. A built in Queen Murphy bed makes this a delightful space. You'll also find the laundry and another bathroom. On the upstairs level you'll be pleased to find the owners suite; complete with a deck with sweeping views. The master bath has been updated, and the closet features custom built-ins. Hurry for your private tour.



**Annie Schneider**  
 303-548-5299  
 annie@annieschneider.com



Scan code  
 for more  
 property  
 details



# 13416 Kuehster Road, Littleton, CO 80127 – All Levels



GROSS INTERNAL AREA  
FLOOR 1: 602 sq. ft., FLOOR 2: 1484 sq. ft.  
FLOOR 3: 661 sq. ft., EXCLUDED AREAS:  
GARAGE: 640 sq. ft., DECK: 402 sq. ft.  
PATIO: 306 sq. ft., PORCH: 262 sq. ft.  
BALCONY: 41 sq. ft.  
TOTAL: 2747 sq. ft.

SIZES AND DIMENSIONS ARE APPROXIMATE, ACTUAL MAY VARY.

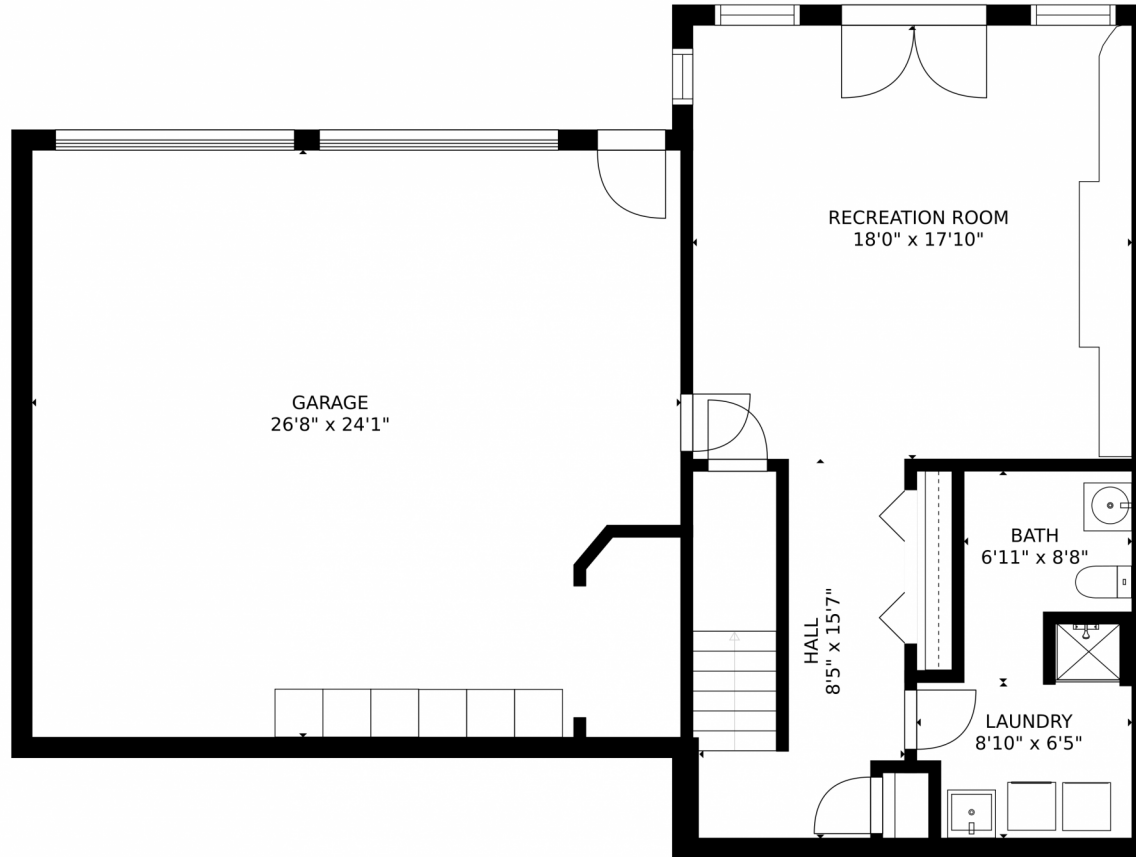
Disclaimer: Sizes and Dimensions are Approximate, Actual May Vary.



Annie Schneider  
303-548-5299  
annie@annieschneider.com



# 13416 Kuehster Road, Littleton, CO 80127 – Lower Level



GROSS INTERNAL AREA  
FLOOR 1: 602 sq. ft., FLOOR 2: 1484 sq. ft.  
FLOOR 3: 661 sq. ft., EXCLUDED AREAS:  
GARAGE: 640 sq. ft., DECK: 402 sq. ft.  
PATIO: 306 sq. ft., PORCH: 262 sq. ft.  
BALCONY: 41 sq. ft.  
TOTAL: 2747 sq. ft.  
SIZES AND DIMENSIONS ARE APPROXIMATE, ACTUAL MAY VARY.

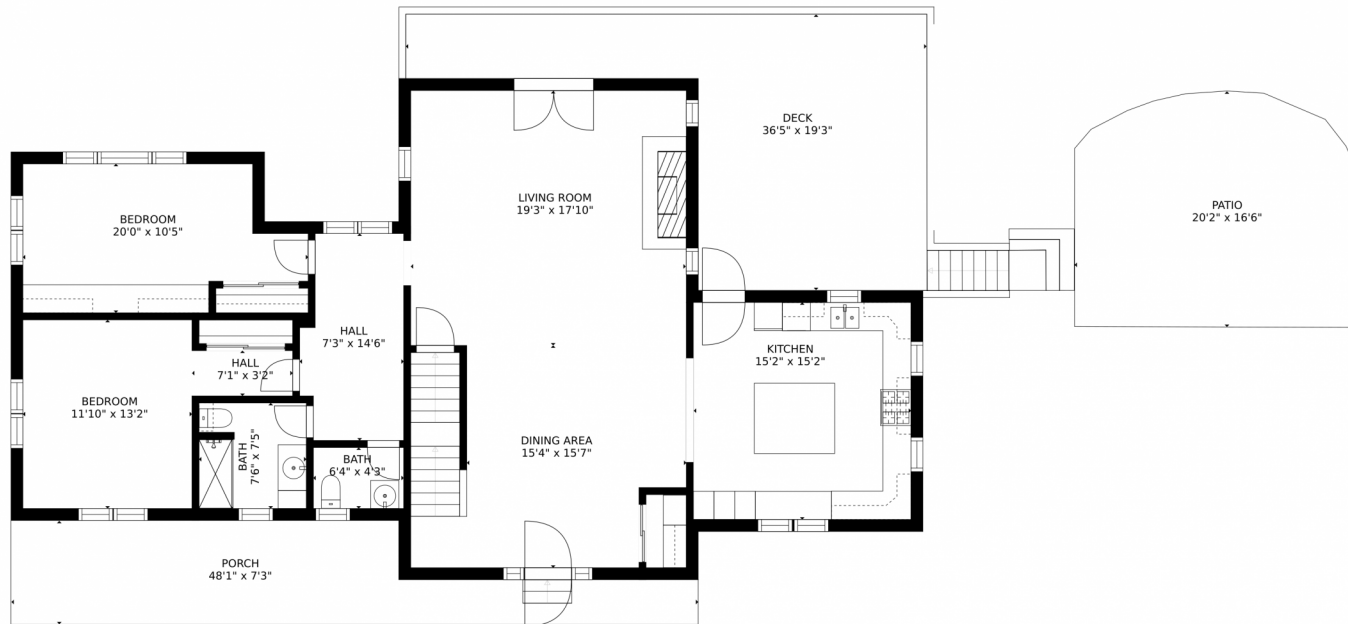
Disclaimer: Sizes and Dimensions are Approximate, Actual May Vary.



**Annie Schneider**  
303-548-5299  
annie@annieschneider.com



# 13416 Kuehster Road, Littleton, CO 80127 – Main Level



GROSS INTERNAL AREA  
FLOOR 1: 602 sq. ft., FLOOR 2: 1484 sq. ft.  
FLOOR 3: 661 sq. ft., EXCLUDED AREAS:  
GARAGE: 640 sq. ft., DECK: 402 sq. ft.  
PATIO: 306 sq. ft., PORCH: 262 sq. ft.  
BALCONY: 41 sq. ft.  
TOTAL: 2747 sq. ft.  
SIZES AND DIMENSIONS ARE APPROXIMATE, ACTUAL MAY VARY.

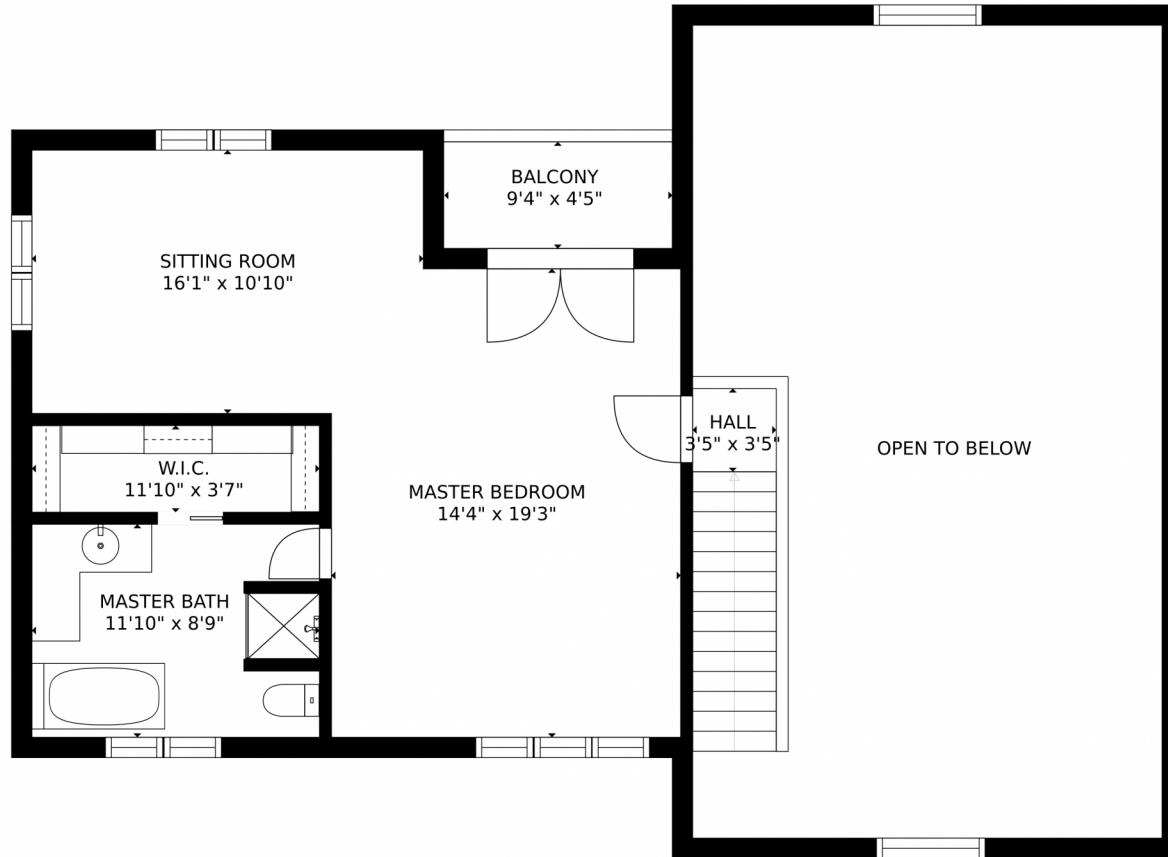
Disclaimer: Sizes and Dimensions are Approximate, Actual May Vary.



**Annie Schneider**  
303-548-5299  
annie@annieschneider.com



13416 Kuehster Road, Littleton, CO 80127 – 2nd Level



GROSS INTERNAL AREA  
FLOOR 1: 602 sq. ft., FLOOR 2: 1484 sq. ft.  
FLOOR 3: 661 sq. ft., EXCLUDED AREAS:  
GARAGE: 640 sq. ft., DECK: 402 sq. ft.  
PATIO: 306 sq. ft., PORCH: 262 sq. ft.  
BALCONY: 41 sq. ft.  
TOTAL: 2747 sq. ft.  
SIZES AND DIMENSIONS ARE APPROXIMATE, ACTUAL MAY VARY.

Disclaimer: Sizes and Dimensions are Approximate, Actual May Vary.



Annie Schneider  
303-548-5299  
annie@annieschneider.com

