



2915 Depew Street
 Wheat Ridge, CO 80214
COMMUNITY: Wheat Ridge

MLS # 7988349
PRICE \$725,000



Single Family



2144 SQFT



4 Beds



2 Baths



1 Car



0.12 Acre

PROPERTY DETAILS

Your chance to live in the highly desirable Wheat Ridge! Close to Highlands, Edgewater and Downtown Denver. This adorable home has been completely updated. Detached garage and Large Backyard. The basement is a private retreat in itself with a separate entrance. Set your showing today! Showings will start on Friday 5/21/2021.



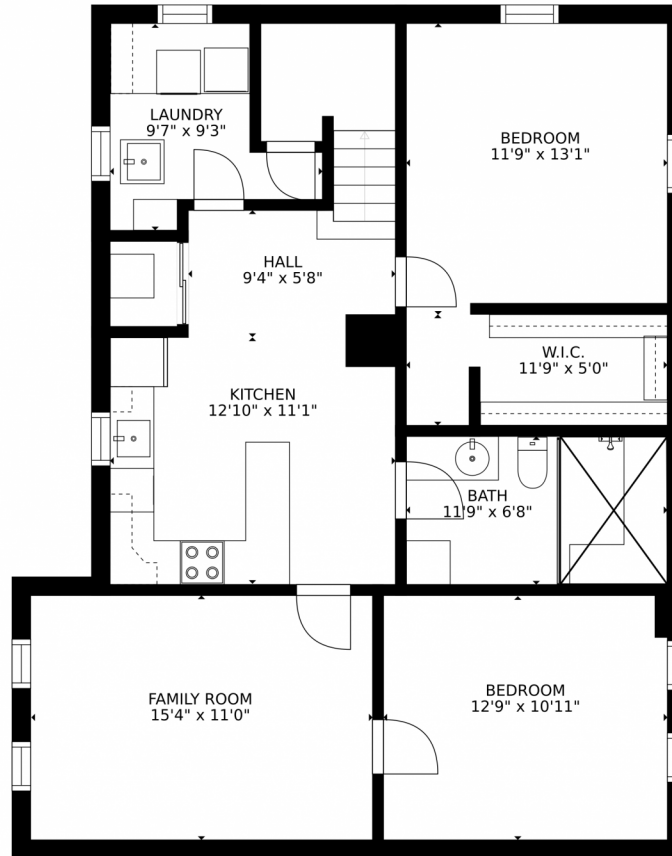
Julie Leins
 720-474-0928
 julieleins@kw.com
<https://coloradohomesdreamteam.com>



Scan code
 for more
 property
 details



2915 Depew Street, Wheat Ridge, CO 80214 – Lower Level



GROSS INTERNAL AREA
FLOOR 1: 958 sq. ft, FLOOR 2: 1168 sq. ft
EXCLUDED AREAS: , PATIO: 206 sq. ft
PORCH: 69 sq. ft
TOTAL: 2126 sq. ft
SIZES AND DIMENSIONS ARE APPROXIMATE, ACTUAL MAY VARY.

Disclaimer: Sizes and Dimensions are Approximate, Actual May Vary.



Julie Leins

720-474-0928

julieleins@kw.com

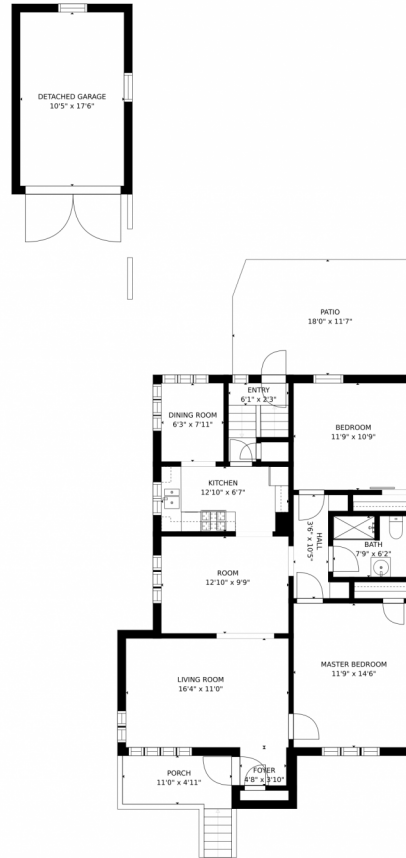
<https://coloradohomesdreamteam.com>



Scan code
for more
property
details



2915 Depew Street, Wheat Ridge, CO 80214 – Main Floor



GROSS INTERNAL AREA
FLOOR 1: 958 sq. ft, FLOOR 2: 1168 sq. ft
EXCLUDED AREAS: , PATIO: 206 sq. ft
PORCH: 69 sq. ft
TOTAL: 2126 sq. ft
SIZES AND DIMENSIONS ARE APPROXIMATE, ACTUAL MAY VARY.

Disclaimer: Sizes and Dimensions are Approximate, Actual May Vary.



Julie Leins
720-474-0928
julieleins@kw.com
<https://coloradohomesdreamteam.com>



2915 Depew Street, Wheat Ridge, CO 80214 – All Floors



SIZES AND DIMENSIONS ARE APPROXIMATE, ACTUAL MAY VARY.

Disclaimer: Sizes and Dimensions are Approximate, Actual May Vary.



Julie Leins
720-474-0928
julieleins@kw.com
<https://coloradohomesdreamteam.com>

