



 Single Family  1832 SQFT



**Taylor Haas**  
303-665-7368  
taylorh@coloradorpm.com  
<https://www.coloradorpm.com/available-rental-properties-denver>



# 11405 King Way, Westminster, CO 80031 – All Levels



GROSS INTERNAL AREA  
FLOOR 1: 598 sq. ft. FLOOR 2: 798 sq. ft  
FLOOR 3: 605 sq. ft. EXCLUDED AREAS:  
DECK: 189 sq. ft. PORCH: 54 sq. ft  
GARAGE: 357 sq. ft  
TOTAL: 2001 sq. ft

SIZES AND DIMENSIONS ARE APPROXIMATE, ACTUAL MAY VARY.

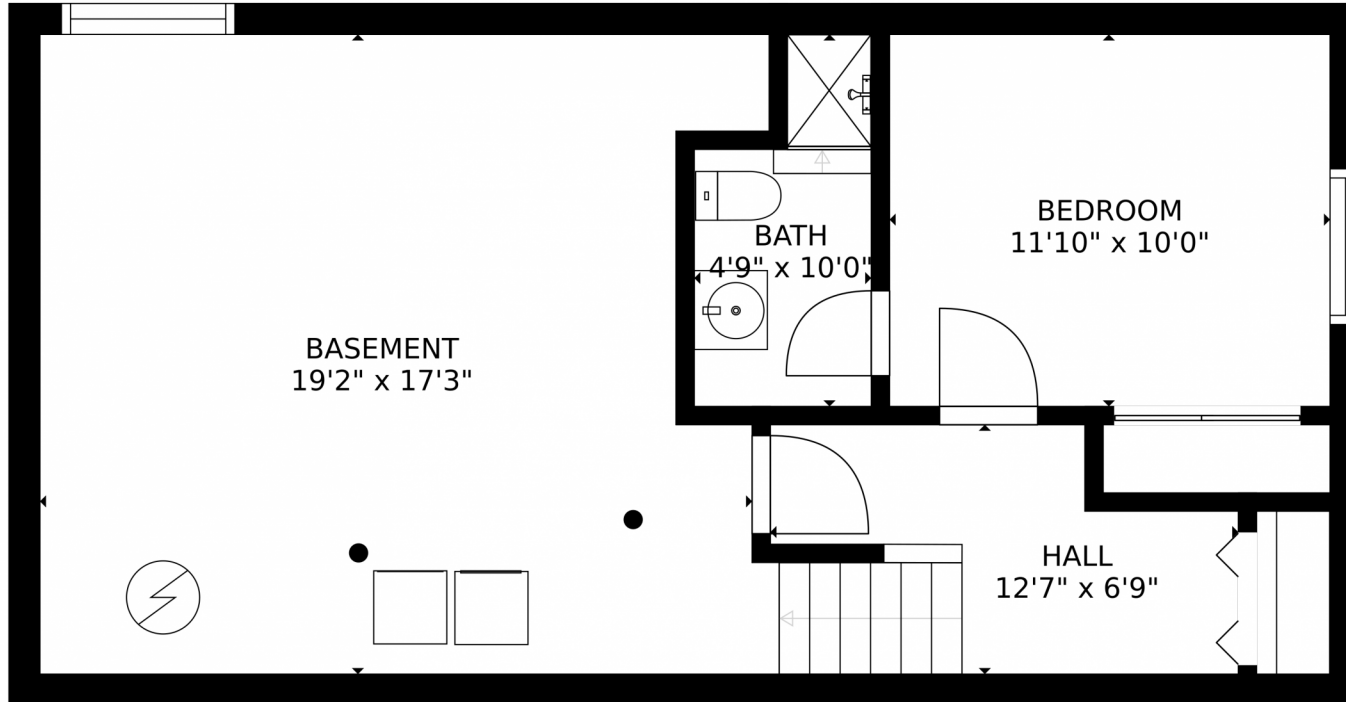
Disclaimer: Sizes and Dimensions are Approximate, Actual May Vary.



**Taylor Haas**  
303-665-7368  
taylorh@coloradorpm.com  
<https://www.coloradorpm.com/available-rental-properties-denver>



Scan code  
for more  
property  
details



GROSS INTERNAL AREA  
FLOOR 1: 598 sq. ft. FLOOR 2: 798 sq. ft.  
FLOOR 3: 605 sq. ft. EXCLUDED AREAS:  
DECK: 189 sq. ft. PORCH: 54 sq. ft.  
GARAGE: 357 sq. ft.  
TOTAL: 2001 sq. ft.  
SIZES AND DIMENSIONS ARE APPROXIMATE, ACTUAL MAY VARY.

Disclaimer: Sizes and Dimensions are Approximate, Actual May Vary.

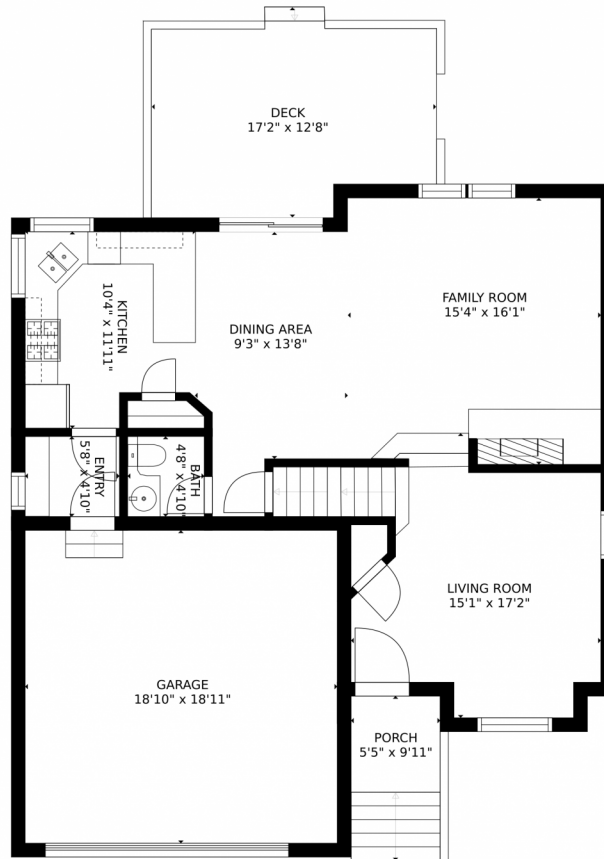


**Taylor Haas**  
303-665-7368  
taylorh@coloradorpm.com  
<https://www.coloradorpm.com/available-rental-properties-denver>





# 11405 King Way, Westminster, CO 80031 – Main Level



GROSS INTERNAL AREA  
FLOOR 1: 598 sq. ft. FLOOR 2: 798 sq. ft.  
FLOOR 3: 605 sq. ft. EXCLUDED AREAS:  
DECK: 189 sq. ft. PORCH: 54 sq. ft.  
GARAGE: 357 sq. ft.  
TOTAL: 2001 sq. ft.  
SIZES AND DIMENSIONS ARE APPROXIMATE, ACTUAL MAY VARY.

Disclaimer: Sizes and Dimensions are Approximate, Actual May Vary.

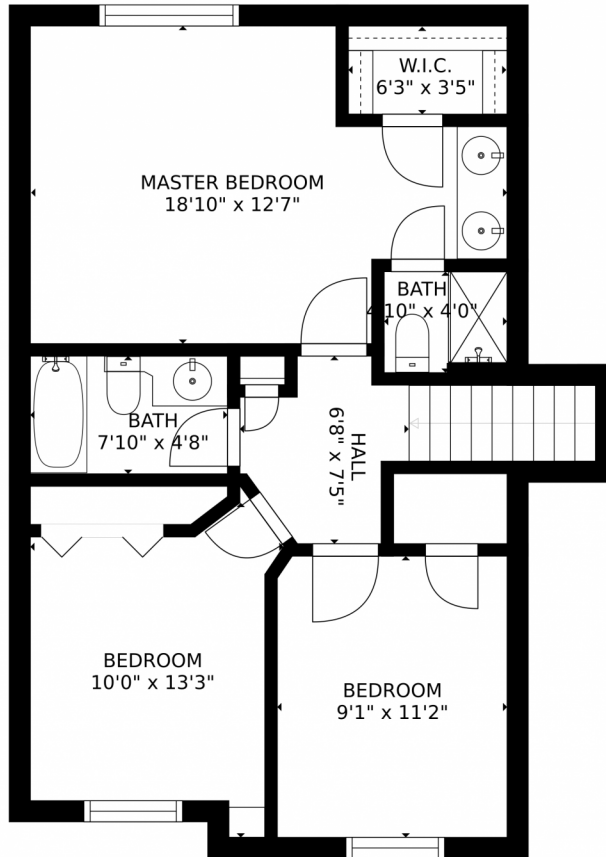


**Taylor Haas**  
303-665-7368  
taylorh@coloradorpm.com  
<https://www.coloradorpm.com/available-rental-properties-denver>



Scan code  
for more  
property  
details

11405 King Way, Westminster, CO 80031 – 2nd Level



GROSS INTERNAL AREA  
FLOOR 1: 598 sq. ft. FLOOR 2: 798 sq. ft.  
FLOOR 3: 605 sq. ft. EXCLUDED AREAS:  
DECK: 189 sq. ft. PORCH: 54 sq. ft.  
GARAGE: 357 sq. ft.  
TOTAL: 2001 sq. ft.  
SIZES AND DIMENSIONS ARE APPROXIMATE, ACTUAL MAY VARY.

Disclaimer: Sizes and Dimensions are Approximate, Actual May Vary.



**Taylor Haas**  
303-665-7368  
taylorh@coloradorpm.com  
<https://www.coloradorpm.com/available-rental-properties-denver>

