



 Single Family  1788 SQFT  3 Beds  2 Baths  1 Car

PROPERTY DETAILS

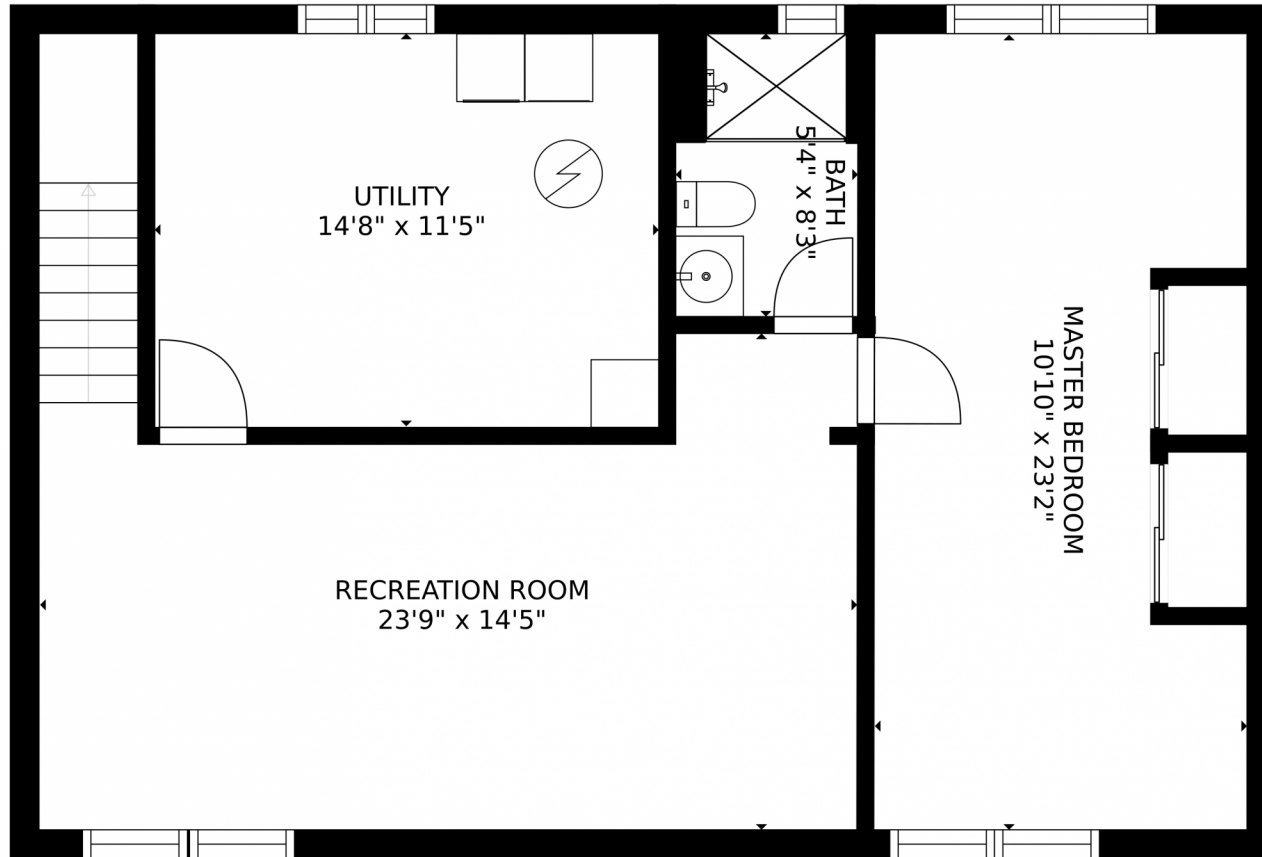
Welcome to this well-maintained home! This Bi-Level has an open concept floorplan with a breakfast bar, great for entertaining. Well-appointed and thoughtfully updated, the home features wood floors and ceramic tile throughout. The main-level master makes single-floor living a breeze, with a full bathroom and additional bedroom also on the main floor. Step down from the kitchen into the basement to find a spacious family room and a third oversized bedroom with an accompanying 3/4 bath. The laundry is also conveniently located on this level, along with an updated storage room that could easily be converted into an office or additional room. Through the one-car garage is a walkout to a large covered patio leading to a sizeable backyard. The lot offers an oasis perfect for an evening escape and has an excess of storage space with two outdoor sheds. Schedule a visit to see your future home today!



Amy J Garcia
719-216-8224
ajgarciaarea@gmail.com



1630 Saratoga Drive, Colorado Springs, CO 80910 – Lower Level



GROSS INTERNAL AREA
FLOOR 1: 814 sq. ft, FLOOR 2: 980 sq. ft
EXCLUDED AREAS: , PATIO: 455 sq. ft
PORCH: 17 sq. ft, GARAGE: 232 sq. ft
TOTAL: 1793 sq. ft
SIZES AND DIMENSIONS ARE APPROXIMATE, ACTUAL MAY VARY.

Disclaimer: Sizes and Dimensions are Approximate, Actual May Vary.

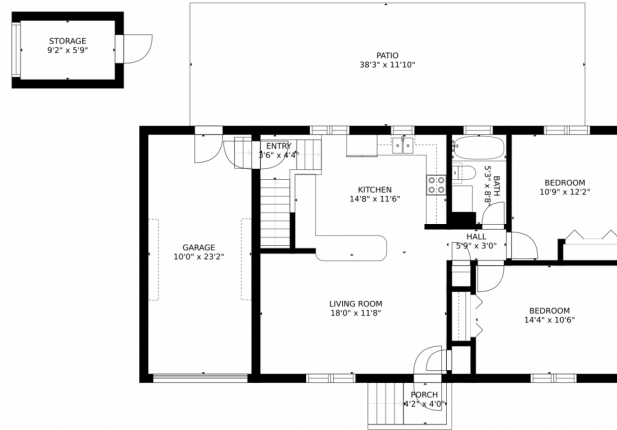


Amy J Garcia
719-216-8224
ajgarciaarea@gmail.com



Scan code
for more
property
details

1630 Saratoga Drive, Colorado Springs, CO 80910 – Main Level



GROSS INTERNAL AREA
FLOOR 1: 814 sq. ft, FLOOR 2: 980 sq. ft
EXCLUDED AREAS: , PATIO: 455 sq. ft
PORCH: 17 sq. ft, GARAGE: 232 sq. ft
TOTAL: 1793 sq. ft
SIZES AND DIMENSIONS ARE APPROXIMATE, ACTUAL MAY VARY.

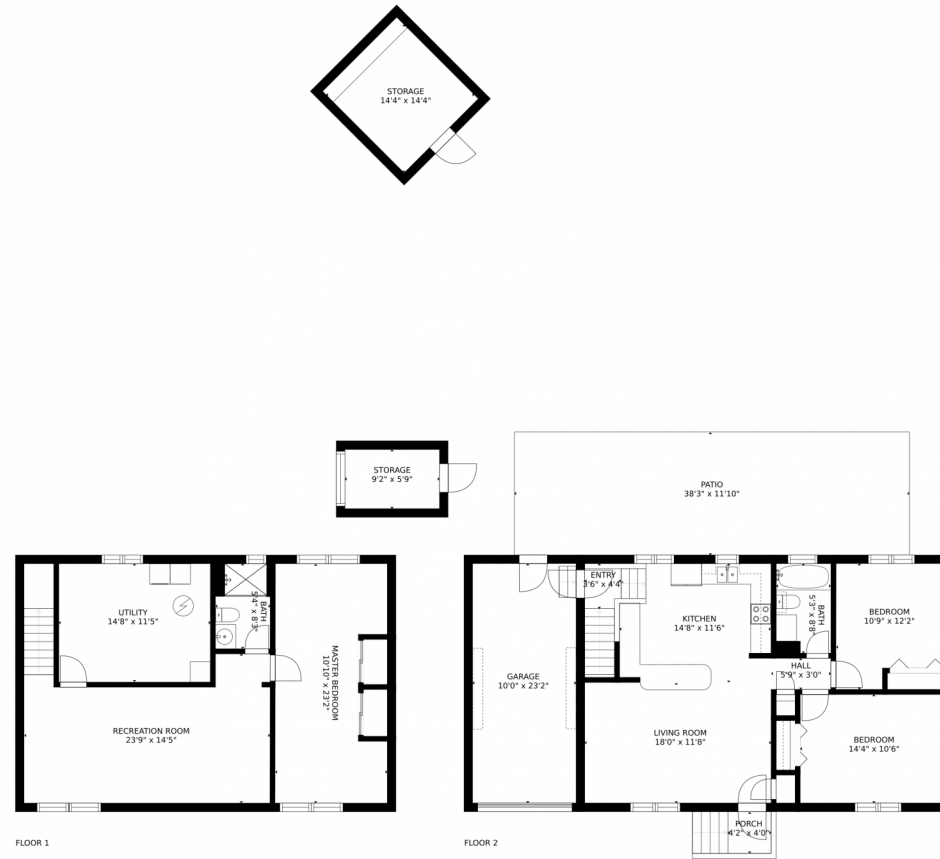
Disclaimer: Sizes and Dimensions are Approximate, Actual May Vary.



Amy J Garcia
719-216-8224
ajgarciaarea@gmail.com



1630 Saratoga Drive, Colorado Springs, CO 80910 – All Levels



GROSS INTERNAL AREA
FLOOR 1: 814 sq. ft, FLOOR 2: 980 sq. ft
EXCLUDED AREAS: , PATIO: 455 sq. ft
PORCH: 17 sq. ft, GARAGE: 232 sq. ft
TOTAL: 1793 sq. ft
SIZES AND DIMENSIONS ARE APPROXIMATE, ACTUAL MAY VARY.

Disclaimer: Sizes and Dimensions are Approximate, Actual May Vary.



Amy J Garcia
719-216-8224
ajgarciaarea@gmail.com

