




 Single Family
  2377 SQFT
  4 Beds
  2/1 Baths
  2 Car
  0.16 Acre

## PROPERTY DETAILS

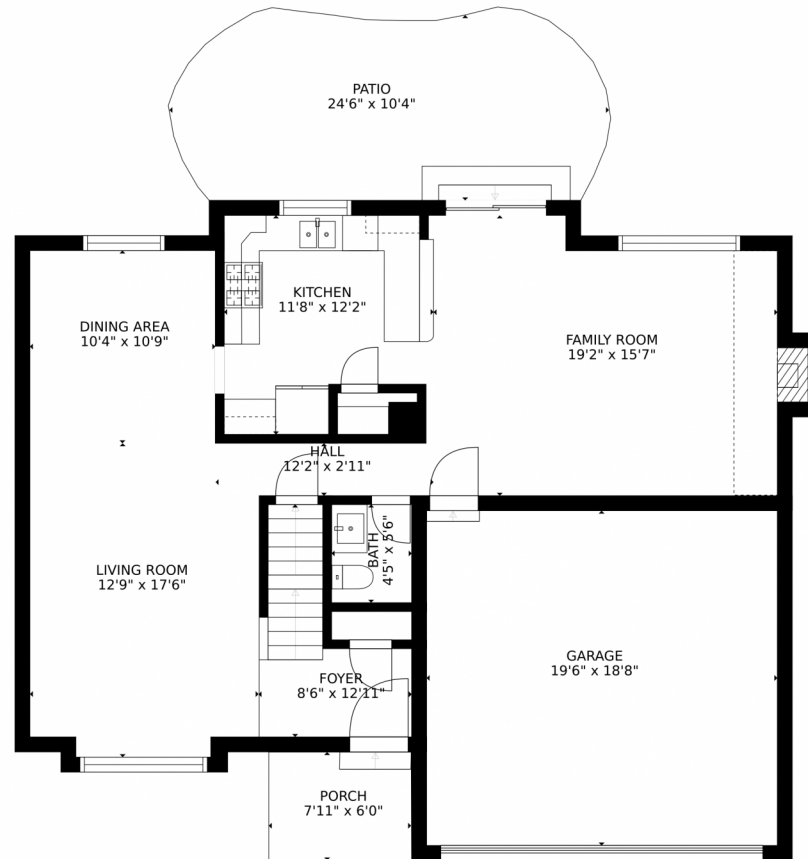
Traditional 2 story home with attached 2 car garage and RV storage. No HOA! Highly sought after floor plan with newer roof in 2018! Spacious home with a very inviting main floor that includes spacious foyer with coat closet formal living room, formal dining room and gorgeous light fixture, kitchen with large pantry, family room features vaulted ceilings and skylights with cozy gas fireplace and sliding glass door that leads to back yard and powder bathroom with farm house appeal and entrance from attached 2 car garage. Upstairs has 2 bedrooms and a master suite and ensuite bathroom along with a full bathroom. Basement boasts 2nd family room the 4th bedroom with egress window and 3/4 bath, laundry room with utility sink and crawl space for storage. Basement would make an ideal dream teen space or a perfect guest suite! Backyard with spacious flagstone patio and plenty of perennials fully fenced. This home is within walking distance of Robert A Easton Regional Park. Location is amazing this home will not last long do not let your Buyers miss out! Home has newer flooring and updates.

All offers Sunday evening 7 pm and a decision to be made by Monday at 2 pm - Sellers reserve the right to accept an offer at anytime.



**Tonie Benetti**  
303-210-7336  
tonie@tbkrealstate.com  
<https://www.tbkrealstate.com>





GROSS INTERNAL AREA  
FLOOR 1: 576 sq. ft. FLOOR 2: 905 sq. ft.  
FLOOR 3: 826 sq. ft. EXCLUDED AREAS:  
PATIO: 232 sq. ft. PORCH: 48 sq. ft.  
GARAGE: 364 sq. ft.  
TOTAL: 2307 sq. ft.  
SIZES AND DIMENSIONS ARE APPROXIMATE, ACTUAL MAY VARY.

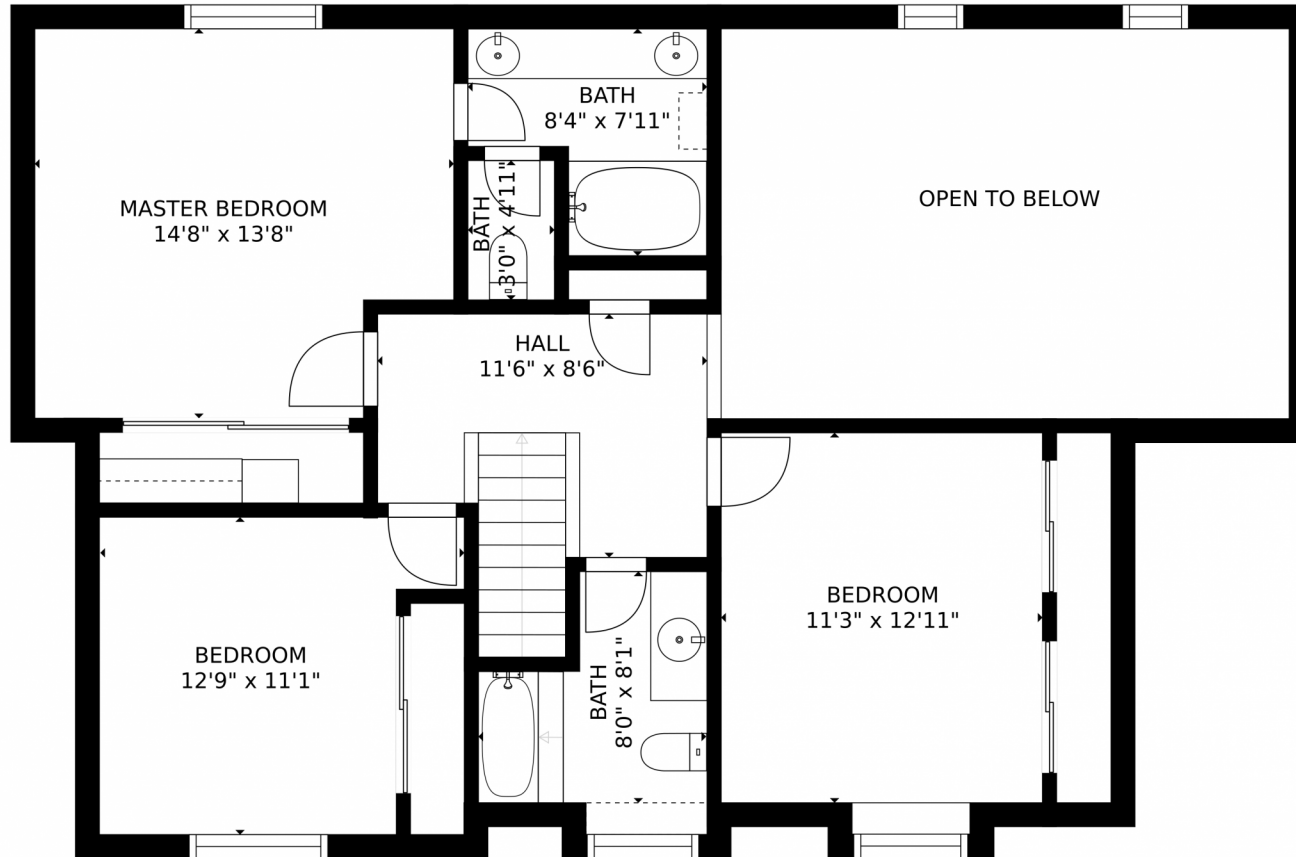
Disclaimer: Sizes and Dimensions are Approximate, Actual May Vary.



**Tonie Benetti**  
303-210-7336  
tonie@tbkrealstate.com  
<https://www.tbkrealstate.com>



6019 S Van Gordon Street, Littleton, CO 80127 – 2nd Level



GROSS INTERNAL AREA  
FLOOR 1: 576 sq. ft. FLOOR 2: 905 sq. ft.  
FLOOR 3: 826 sq. ft. EXCLUDED AREAS:  
PATIO: 232 sq. ft. PORCH: 48 sq. ft.  
GARAGE: 364 sq. ft.  
TOTAL: 2307 sq. ft.  
SIZES AND DIMENSIONS ARE APPROXIMATE, ACTUAL MAY VARY.

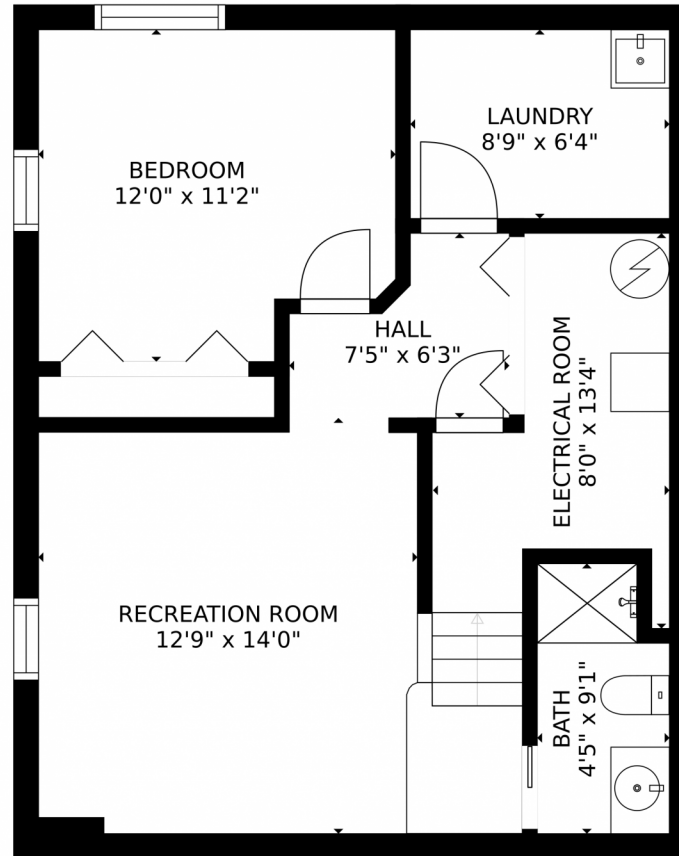
Disclaimer: Sizes and Dimensions are Approximate, Actual May Vary.



**Tonie Benetti**  
303-210-7336  
tonie@tbkrealstate.com  
<https://www.tbkrealstate.com>



6019 S Van Gordon Street, Littleton, CO 80127 – Lower Level



GROSS INTERNAL AREA  
FLOOR 1: 576 sq. ft. FLOOR 2: 905 sq. ft.  
FLOOR 3: 826 sq. ft. EXCLUDED AREAS:  
PATIO: 232 sq. ft. PORCH: 48 sq. ft.  
GARAGE: 364 sq. ft.  
TOTAL: 2307 sq. ft.  
SIZES AND DIMENSIONS ARE APPROXIMATE, ACTUAL MAY VARY.

Disclaimer: Sizes and Dimensions are Approximate, Actual May Vary.



**Tonie Benetti**  
303-210-7336  
tonie@tbkrealstate.com  
<https://www.tbkrealstate.com>



# 6019 S Van Gordon Street, Littleton, CO 80127 – All Levels



GROSS INTERNAL AREA  
FLOOR 1: 576 sq. ft. FLOOR 2: 905 sq. ft.  
FLOOR 3: 826 sq. ft. EXCLUDED AREAS:  
PATIO: 232 sq. ft. PORCH: 48 sq. ft.  
GARAGE: 364 sq. ft.  
TOTAL: 2307 sq. ft.  
SIZES AND DIMENSIONS ARE APPROXIMATE, ACTUAL MAY VARY.

Disclaimer: Sizes and Dimensions are Approximate, Actual May Vary.



**Tonie Benetti**  
303-210-7336  
tonie@tbkrealstate.com  
<https://www.tbkrealstate.com>

