



770 Panorama Court
 Boulder, CO 80303
 COMMUNITY: Panorama Park - Top of Spanish Hills

MLS # 941903

PRICE
 \$2,700,000

Gorgeous home with 10+ car detached shop

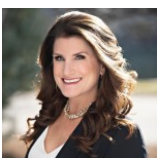


Single Family 6323 SQFT 5 Beds 5/1 Baths 10+ Car 0.89 Acre

PROPERTY DETAILS

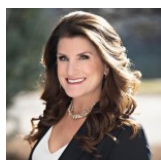
Homes of this magnitude don't come on the market frequently, and when they do, they garner attention. This beautiful home is adjacent to the Davidson Mesa Open Space, atop the desirable Panorama Park neighborhood. Enjoy a spectacular indoor-outdoor lifestyle as the main level living spaces spill out onto a covered patio overlooking the beautiful, mature landscaping, while relaxing to the sound of your own water feature. Situated on just under an acre, the backyard is its' own oasis of serenity and privacy, with direct access to the adjacent trails. The house is warm and rich with an abundance of natural light, walls of windows that invite the outside in, generous hardwood flooring, and views from the master bedroom. The functional floorplan lends itself perfectly to everyday living as well as entertaining, with a large, eat-in kitchen overlooking the gathering room with a beautiful stone fireplace, and multiple doors leading to the outside. With cherry cabinetry, abundant storage, multiple prep spaces, an oversized walk-in pantry, and high end appliances, the kitchen will definitely be the heart of the home. The basement is fully finished with a recreation area, wine room, wet bar.

At 2100 finished square feet, the detached shop is really the crown jewel of this property. Perfect for the car collector, hobbyist or for a home-based business, this fully heated shop has 220 volt outlet with 200 amp service, custom cabinetry, and room for 10 cars. A shop of this size and build quality is next to impossible to build today. This shop is in addition to the oversized 3 car garage attached to the house.

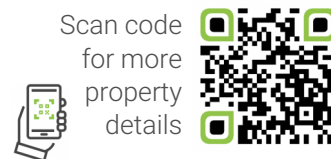


Julie Berghoff
 303-641-0389
 julieb1@remax.net



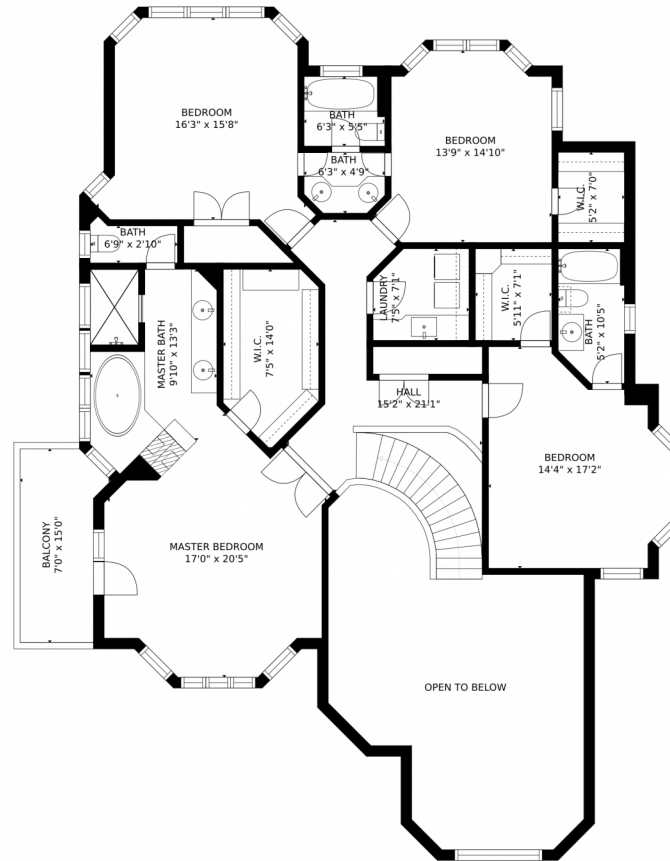


Julie Berghoff
303-641-0389
julieb1@remax.net



Scan code
for more
property
details

770 Panorama Court, Boulder, CO 80303 – 2nd Floor



GROSS INTERNAL AREA
FLOOR 1: 1981 sq. ft. FLOOR 2: 2080 sq. ft
FLOOR 3: 1718 sq. ft. EXCLUDED AREAS:
DECK: 217 sq. ft. PATIO: 2885 sq. ft
PORCH: 153 sq. ft. GARAGE: 2640 sq. ft
BALCONY: 87 sq. ft
TOTAL: 5779 sq. ft
SIZES AND DIMENSIONS ARE APPROXIMATE, ACTUAL MAY VARY.

Disclaimer: Sizes and Dimensions are Approximate, Actual May Vary.

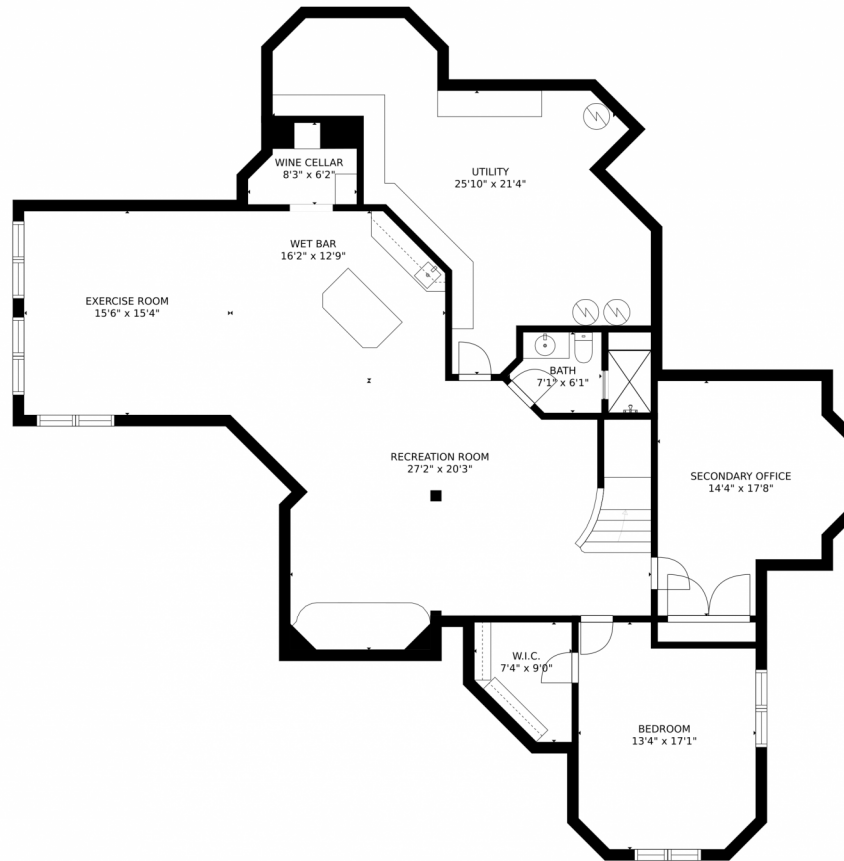


Julie Berghoff
303-641-0389
julieb1@remax.net



Scan code
for more
property
details

770 Panorama Court, Boulder, CO 80303 – Lower Level



GROSS INTERNAL AREA
FLOOR 1: 1981 sq. ft. FLOOR 2: 2080 sq. ft.
FLOOR 3: 1718 sq. ft. EXCLUDED AREAS:
DECK: 217 sq. ft. PATIO: 2885 sq. ft.
PORCH: 153 sq. ft. GARAGE: 2640 sq. ft.
BALCONY: 87 sq. ft.
TOTAL: 5779 sq. ft.
SIZES AND DIMENSIONS ARE APPROXIMATE, ACTUAL MAY VARY.

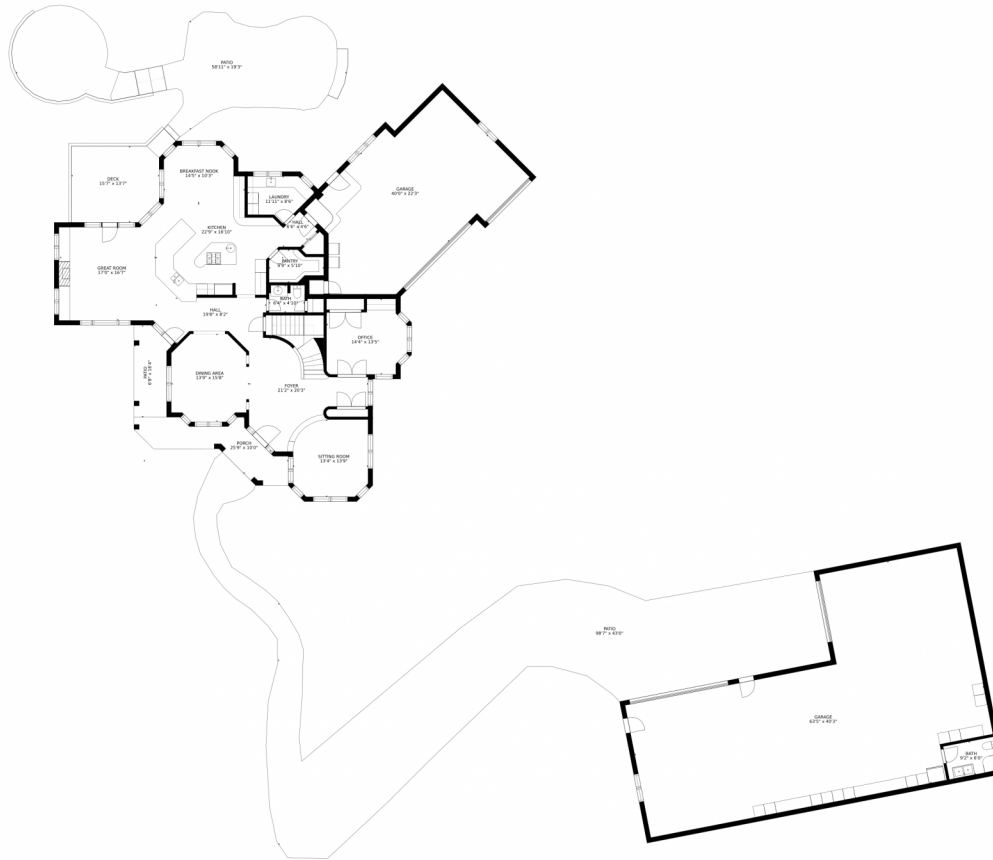
Disclaimer: Sizes and Dimensions are Approximate, Actual May Vary.



Julie Berghoff
303-641-0389
julieb1@remax.net



770 Panorama Court, Boulder, CO 80303 – Main Floor



GROSS INTERNAL AREA
FLOOR 1: 1981 sq. ft. FLOOR 2: 2080 sq. ft.
FLOOR 3: 1718 sq. ft. EXCLUDED AREAS:
DECK: 217 sq. ft. PATIO: 2885 sq. ft.
PORCH: 153 sq. ft. GARAGE: 2640 sq. ft.
BALCONY: 87 sq. ft.
TOTAL: 5779 sq. ft.
SIZES AND DIMENSIONS ARE APPROXIMATE, ACTUAL MAY VARY.

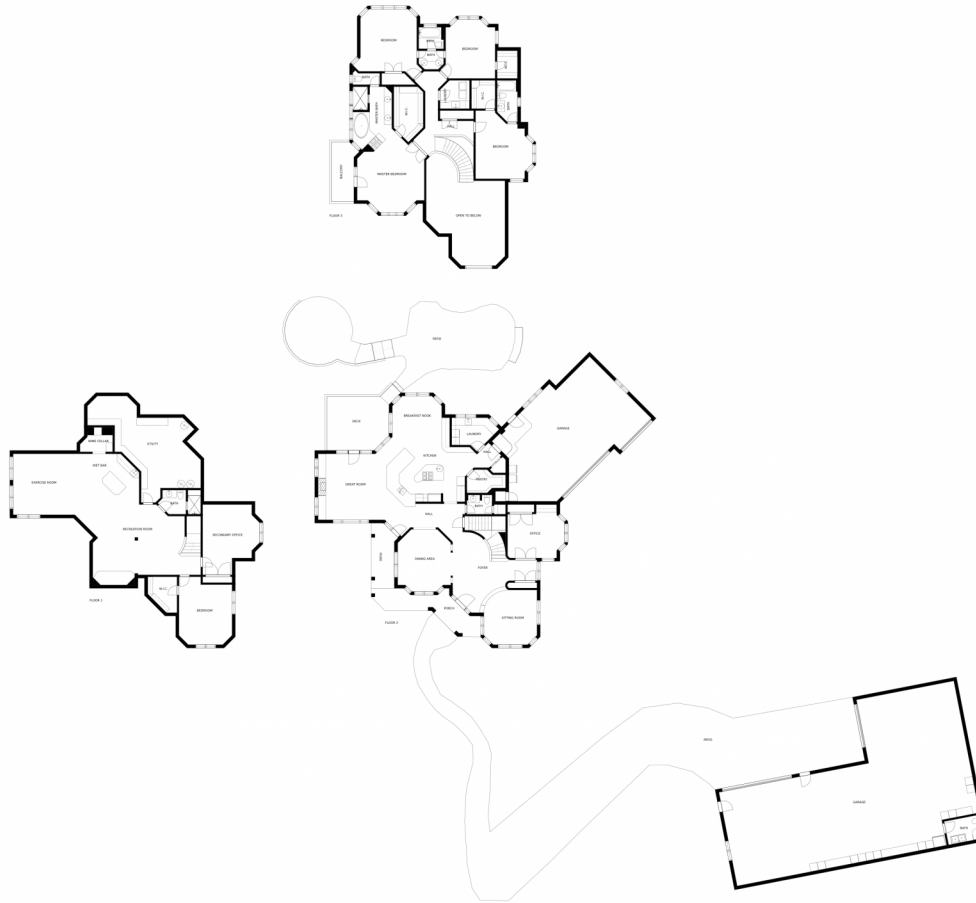
Disclaimer: Sizes and Dimensions are Approximate, Actual May Vary.



Julie Berghoff
303-641-0389
julieb1@remax.net



770 Panorama Court, Boulder, CO 80303 – All Floors



SIZES AND DIMENSIONS ARE APPROXIMATE, ACTUAL MAY VARY.

Disclaimer: Sizes and Dimensions are Approximate, Actual May Vary.



Julie Berghoff
303-641-0389
julieb1@remax.net

