

Single Family



1610 SQFT



Taylor Haas

303-665-7368

taylorh@coloradorpm.com

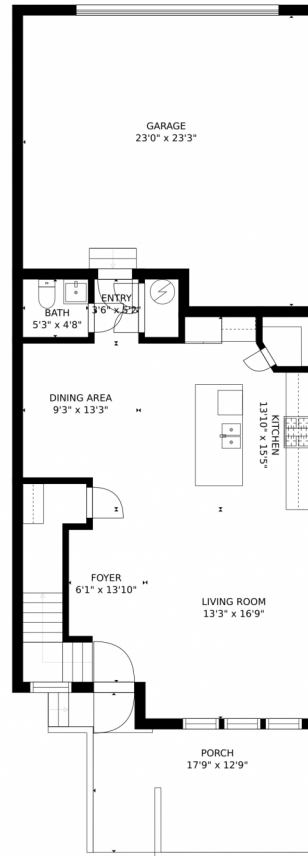
<https://www.coloradorpm.com/available-rental-properties-denver>



Scan code
for more
property
details



4793 Memphis Street, Denver, CO 80239 – Main Level



GROSS INTERNAL AREA
FLOOR 1: 750 sq. ft, FLOOR 2: 869 sq. ft
EXCLUDED AREAS: , PORCH: 195 sq. ft
GARAGE: 497 sq. ft
TOTAL: 1620 sq. ft
SIZES AND DIMENSIONS ARE APPROXIMATE, ACTUAL MAY VARY.

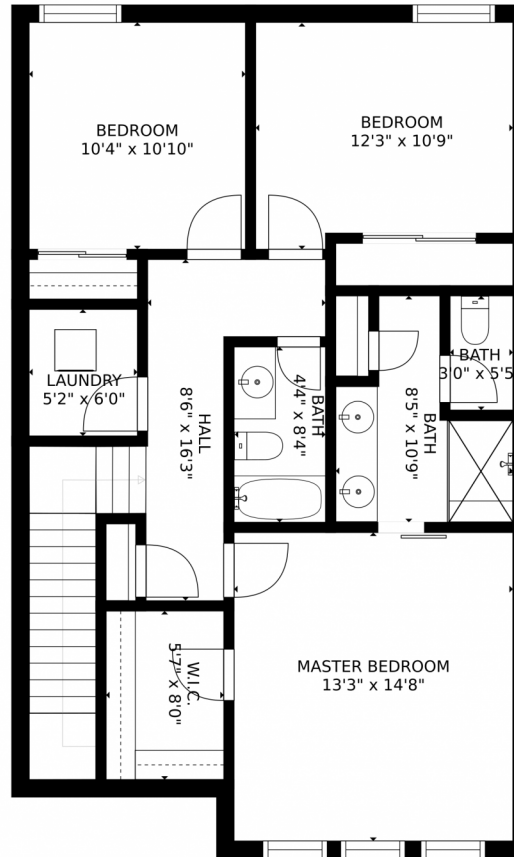
Disclaimer: Sizes and Dimensions are Approximate, Actual May Vary.



Taylor Haas
303-665-7368
taylorh@coloradorpm.com
<https://www.coloradorpm.com/available-rental-properties-denv>



4793 Memphis Street, Denver, CO 80239 – 2nd Level



GROSS INTERNAL AREA
FLOOR 1: 750 sq. ft, FLOOR 2: 869 sq. ft
EXCLUDED AREAS: , PORCH: 195 sq. ft
GARAGE: 497 sq. ft
TOTAL: 1620 sq. ft
SIZES AND DIMENSIONS ARE APPROXIMATE, ACTUAL MAY VARY.

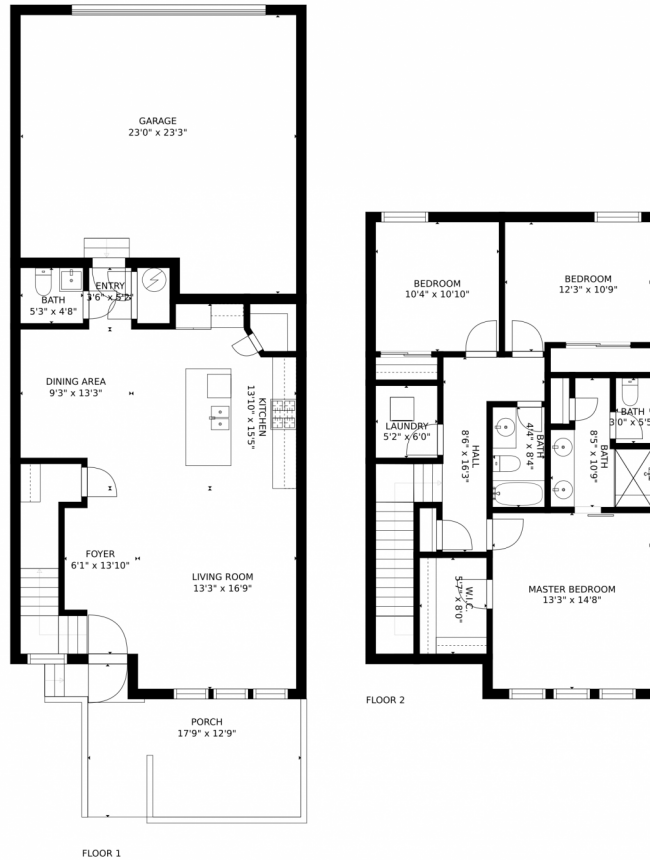
Disclaimer: Sizes and Dimensions are Approximate, Actual May Vary.



Taylor Haas
303-665-7368
taylorh@coloradorpm.com
<https://www.coloradorpm.com/available-rental-properties-denver>



4793 Memphis Street, Denver, CO 80239 – All Levels



GROSS INTERNAL AREA
FLOOR 1: 750 sq. ft, FLOOR 2: 869 sq. ft
EXCLUDED AREAS: , PORCH: 195 sq. ft
GARAGE: 497 sq. ft
TOTAL: 1620 sq. ft
SIZES AND DIMENSIONS ARE APPROXIMATE, ACTUAL MAY VARY.

Disclaimer: Sizes and Dimensions are Approximate, Actual May Vary.



Taylor Haas
303-665-7368
taylorh@coloradorpm.com
<https://www.coloradorpm.com/available-rental-properties-denv>



Scan code
for more
property
details