



12142 Bannock Circle
 Westminster, CO 80234
COMMUNITY: The Meadows at Timberlake

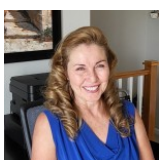
MLS # 2148031
 PRICE \$335,000



Condominium 2042 SQFT 3 Beds 3 Baths 2 Car

PROPERTY DETAILS

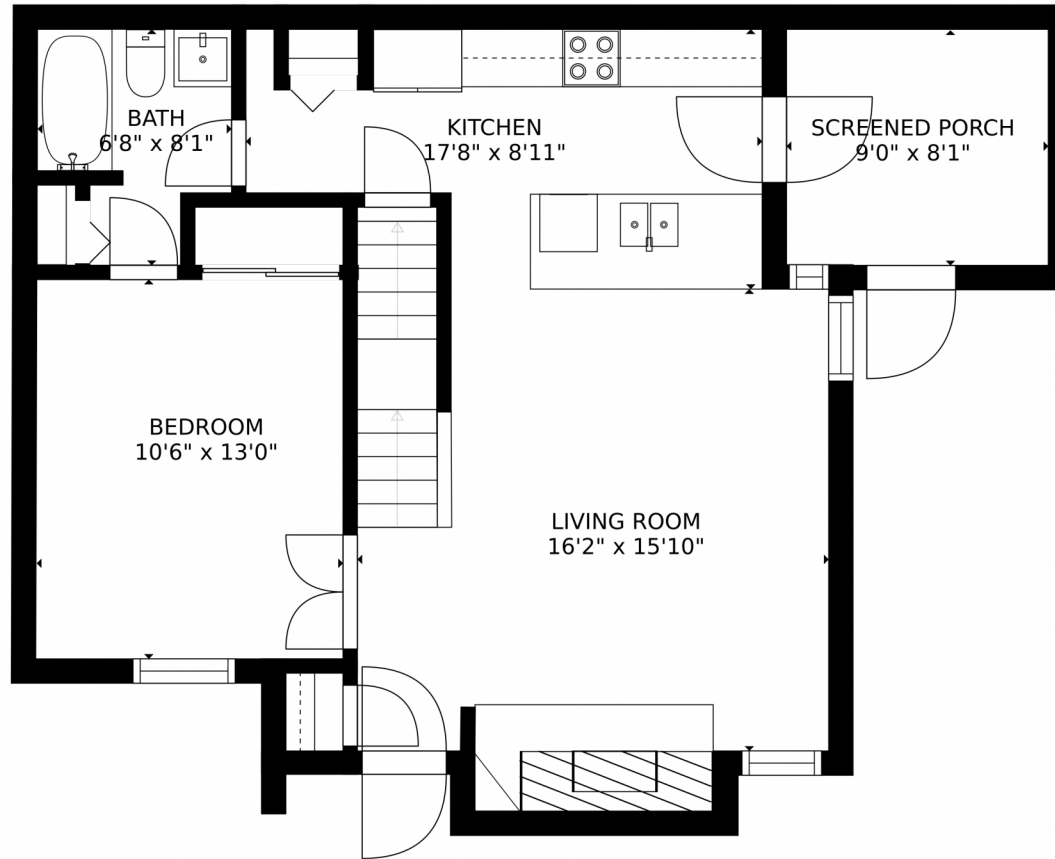
Stunning condo with 3 levels of well-appointed living space that lives like a townhome. Rare 2-car garage End Unit w 3 Bedrooms and 3 full bathrooms. From the minute you walk in the door you will fall in love and want to call this home. Vaulted ceiling and large windows allow natural light to fill the two-story open space that incorporates the living room and updated kitchen with granite counters and SS appliances. Adjacent to the living room is a main floor bedroom with full bathroom. The living room includes an electric fireplace that is perfect for Colorado's chilly nights and having the ability to adjust the heat and flame via remote control. The backdoor from the kitchen leads to your private outdoor fenced patio that is perfect for grilling or just hanging out. Upstairs has an open loft area with custom Alfa shelving – a \$2K upgrade that is very versatile. The upstairs bedroom and full bath complete the second story. Need more space, the fully finished basement features a spacious family/game room, private bedroom w custom closet inserts and private full bath. Plus, a laundry room with storage. Low HOA is \$246/mo.



Joline Andasola
 720-936-2824
 joline@co-mire.com
<https://www.facebook.com/coloradomoveinrealestate>



12142 Bannock Circle, Westminster, CO 80234 – Main Level



GROSS INTERNAL AREA
FLOOR 1: 581 sq. ft. FLOOR 2: 640 sq. ft.
FLOOR 3: 360 sq. ft.
TOTAL: 1580 sq. ft.
SIZES AND DIMENSIONS ARE APPROXIMATE, ACTUAL MAY VARY.

Disclaimer: Sizes and Dimensions are Approximate, Actual May Vary.



Joline Andasola

720-936-2824

joline@co-mire.com

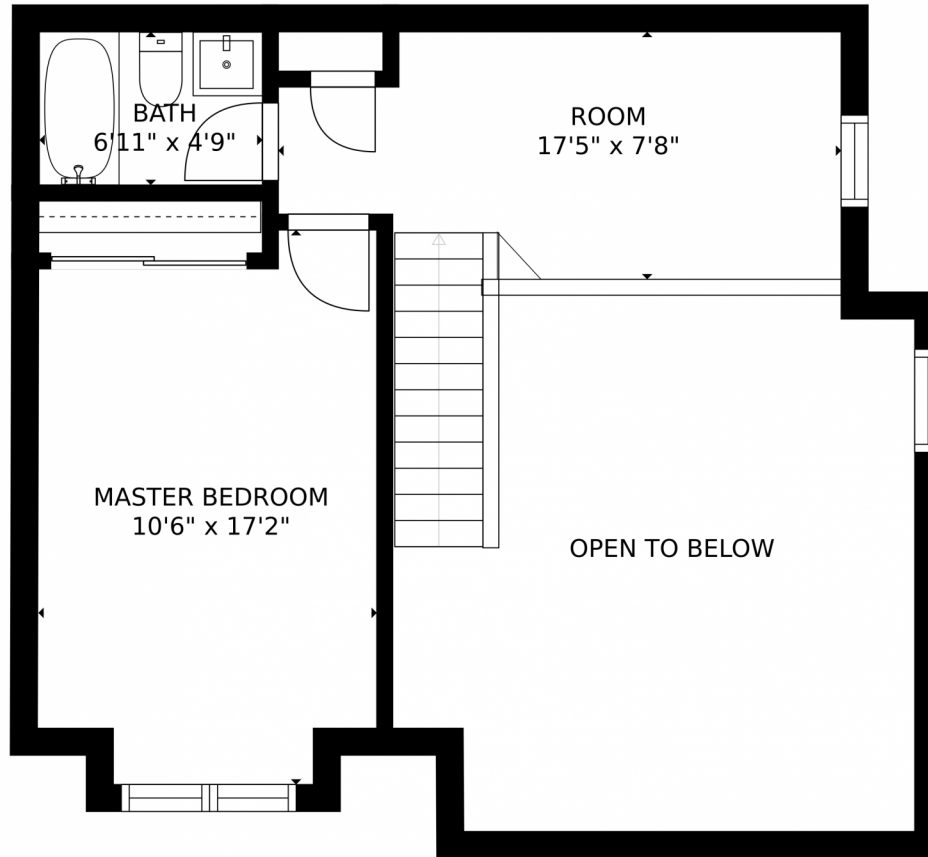
<https://www.facebook.com/coloradomoveinrealestate>



Scan code
for more
property
details



12142 Bannock Circle, Westminster, CO 80234 – 2nd Level



GROSS INTERNAL AREA
FLOOR 1: 581 sq. ft. FLOOR 2: 640 sq. ft.
FLOOR 3: 360 sq. ft.
TOTAL: 1580 sq. ft.
SIZES AND DIMENSIONS ARE APPROXIMATE, ACTUAL MAY VARY.

Disclaimer: Sizes and Dimensions are Approximate, Actual May Vary.



Joline Andasola

720-936-2824

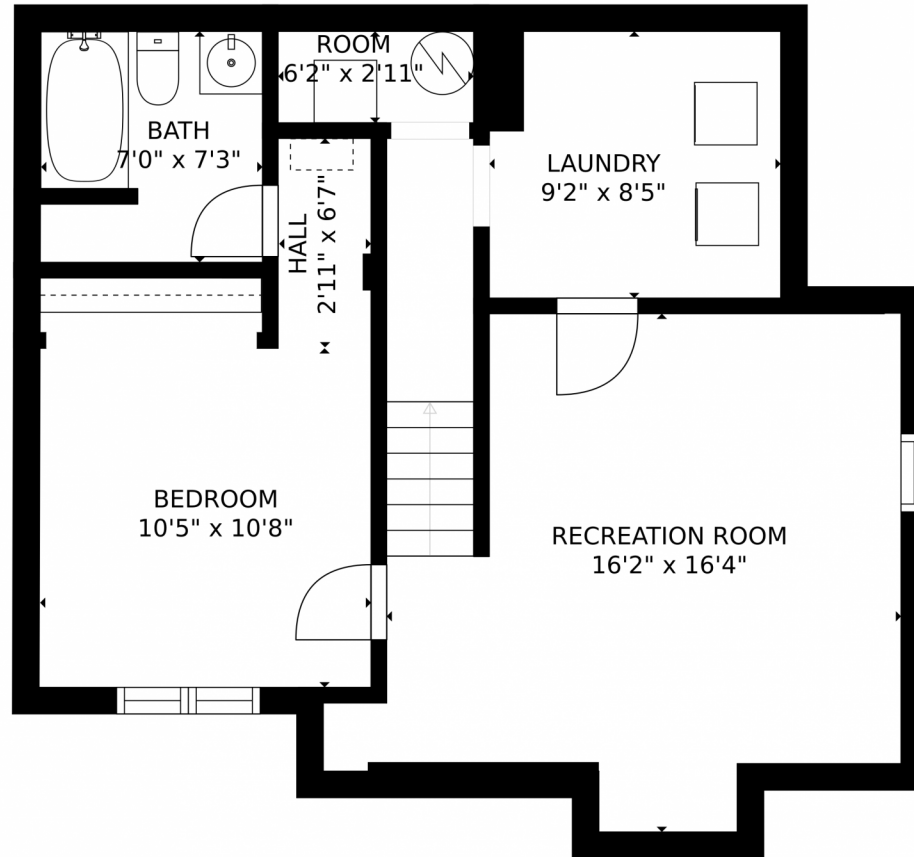
joline@co-mire.com

<https://www.facebook.com/coloradomoveinrealestate>



Scan code
for more
property
details





GROSS INTERNAL AREA
FLOOR 1: 581 sq. ft. FLOOR 2: 640 sq. ft.
FLOOR 3: 360 sq. ft.
TOTAL: 1580 sq. ft.
SIZES AND DIMENSIONS ARE APPROXIMATE, ACTUAL MAY VARY.

Disclaimer: Sizes and Dimensions are Approximate, Actual May Vary.



Joline Andasola

720-936-2824

joline@co-mire.com

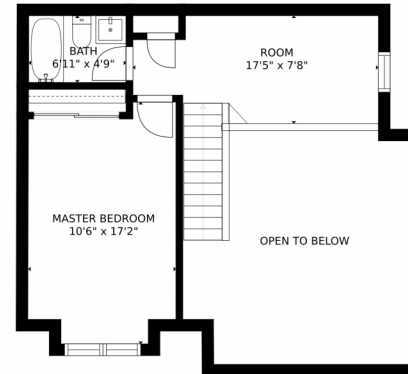
<https://www.facebook.com/coloradomoveinrealestate>



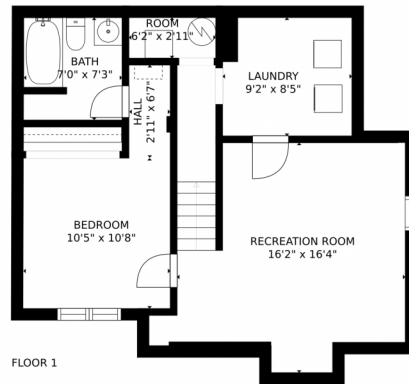
Scan code
for more
property
details



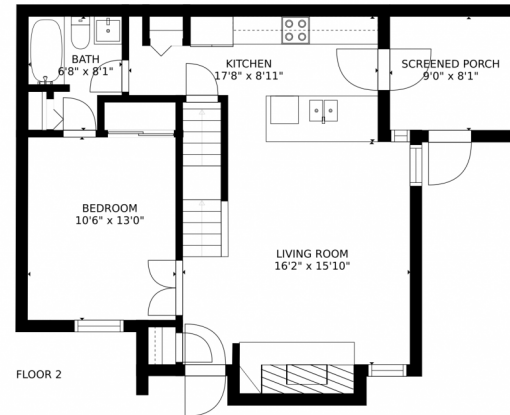
12142 Bannock Circle, Westminster, CO 80234 – All Levels



FLOOR 3



FLOOR 1



FLOOR 2

GROSS INTERNAL AREA
FLOOR 1: 581 sq. ft. FLOOR 2: 640 sq. ft.
FLOOR 3: 360 sq. ft.
TOTAL: 1580 sq. ft.
SIZES AND DIMENSIONS ARE APPROXIMATE, ACTUAL MAY VARY.

Disclaimer: Sizes and Dimensions are Approximate, Actual May Vary.



Joline Andasola

720-936-2824

joline@co-mire.com

<https://www.facebook.com/coloradomoveinrealestate>

