



Single Family



1901 SQFT



**Taylor Haas**

303-665-7368

taylorh@coloradorpm.com

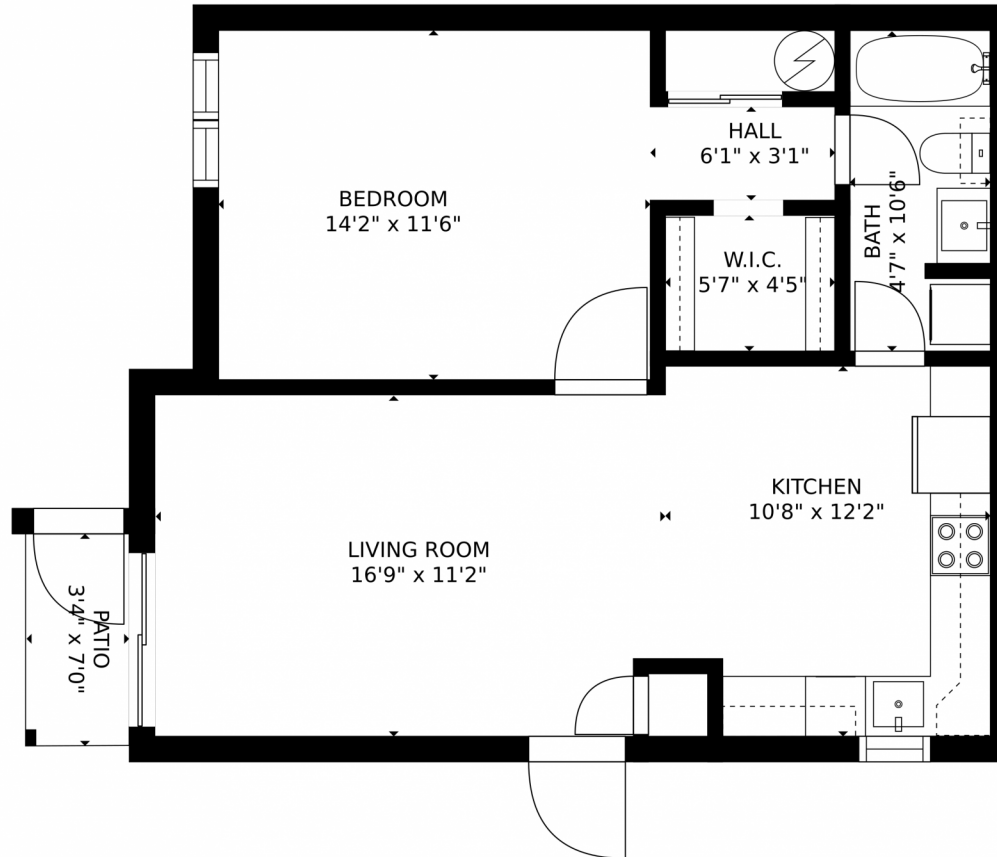
<https://www.coloradorpm.com/available-rental-properties-denver>



Scan code  
for more  
property  
details



3600 South Pierce Street, Lakewood, CO 80235 – Main Level



GROSS INTERNAL AREA  
FLOOR 1: 610 sq. ft. EXCLUDED AREAS:  
PATIO: 24 sq. ft  
TOTAL: 610 sq. ft  
SIZES AND DIMENSIONS ARE APPROXIMATE, ACTUAL MAY VARY.

Disclaimer: Sizes and Dimensions are Approximate, Actual May Vary.



**Taylor Haas**  
303-665-7368  
taylorh@coloradorpm.com  
<https://www.coloradorpm.com/available-rental-properties-denver>

