

1094 McIntosh Avenue
Broomfield, CO 80020
COMMUNITY: Highland Park

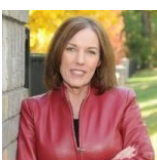
MLS # 4359775
PRICE \$700,000



 Single Family  3777 SQFT  4 Beds  4/1 Baths  3 Car

PROPERTY DETAILS

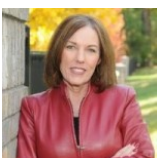
Truly Amazing Two-Story Home in highly sought after Highland Park South with Main Floor Master. Huge Finished Walk-out Basement opens to nicely landscaped private yard with Mountain Views! Highland Park is a Non-HOA Neighborhood within Walking Distance of Stores, Restaurants, Batting Cages, Skate Park, Tennis Courts, Soccer Fields, Bay Swimming Pool, New Recreation Center and Library! These are all walkable without going onto a street! Huge Greenspace behind home with extensive Walking Paths with new Solar Lighting that continues for Miles. Home is Beautifully Updated with Wide Plank Hardwood throughout the Main Floor. Updated Kitchen has Gas Stove, Stainless Appliances, Bosch Refrigerator, Granite Counters, Tile Floor, Desk Area and Updated LED Lighting throughout Home. Off the kitchen, you will find a large covered deck perfect for entertaining. The Large Main Floor Master has Vaulted Ceiling, Large Private 5 Piece Master Bath with Double Sinks and Walk-in Closet! Upstairs you will find 3 large Bedrooms all with Walk-in Closets. The upstairs Bath is Updated with Custom Tile and Double sinks. Electrolux Washer and Dryer Stay! Walk-out Basement has Huge Family Room with Built-in Entertainment Center, Surround Sound and Custom Built Bar with Sink and Mini-Refrigerator. Downstairs Bedroom is framed with electrical and just needs your finishing touches - it also has a large Walk-in Closet. Large 3/4 Bathroom in Basement



Carolyn Tracy
720-495-9229
caroltracy105@hotmail.com



Conveniently located off Family Room. Huge Workshop/Storeroom in Basement with Pantry and Built-in Shelves provide Plenty of Storage. Neighborhood has very little traffic as the streets only service this neighborhood. Walk to King Soopers, Home Depot, many Stores and Restaurants. Whole Foods, Starbucks and Sprouts are close and Public Transportation is just Blocks Away. Gate in Backyard leads to Walking Path that goes for Miles in Both Directions.



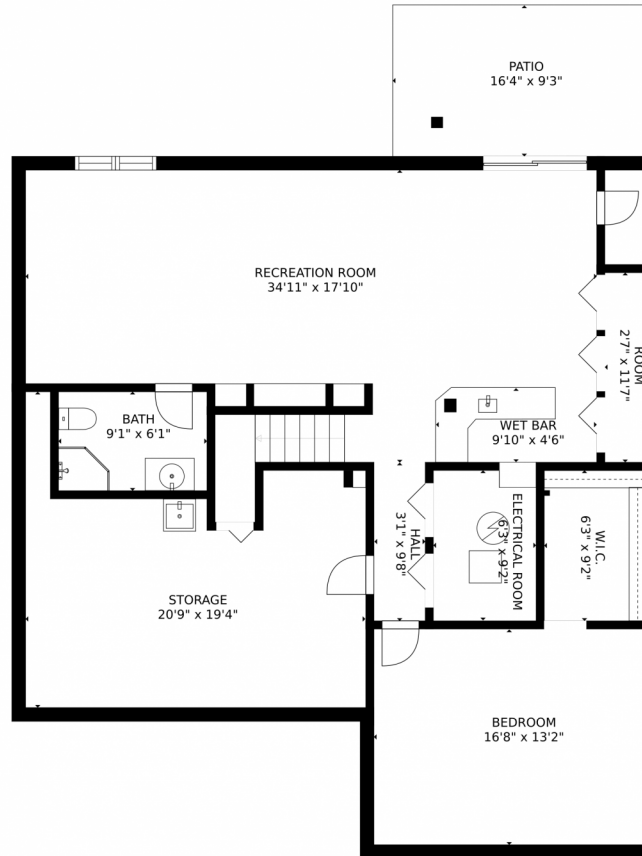
Carolyn Tracy
720-495-9229
caroltracy105@hotmail.com



Scan code
for more
property
details



1094 McIntosh Avenue, Broomfield, CO 80020 – Lower Level



GROSS INTERNAL AREA
FLOOR 1: 1385 sq. ft. FLOOR 2: 1470 sq. ft.
FLOOR 3: 712 sq. ft. EXCLUDED AREAS:
PATIO: 151 sq. ft. DECK: 234 sq. ft.
PORCH: 39 sq. ft. GARAGE: 555 sq. ft.
TOTAL: 3567 sq. ft.
SIZES AND DIMENSIONS ARE APPROXIMATE, ACTUAL MAY VARY.

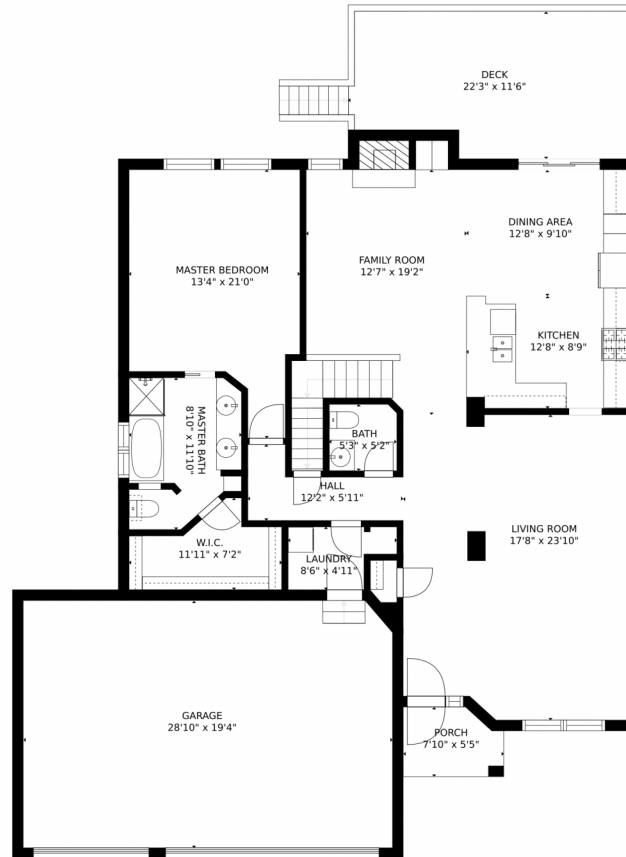
Disclaimer: Sizes and Dimensions are Approximate, Actual May Vary.



Carolyn Tracy
720-495-9229
caroltracy105@hotmail.com



1094 McIntosh Avenue, Broomfield, CO 80020 – Main Level



GROSS INTERNAL AREA
FLOOR 1: 1385 sq. ft. FLOOR 2: 1470 sq. ft.
FLOOR 3: 712 sq. ft. EXCLUDED AREAS:
PATIO: 151 sq. ft. DECK: 234 sq. ft.
PORCH: 39 sq. ft. GARAGE: 555 sq. ft.
TOTAL: 3567 sq. ft.
SIZES AND DIMENSIONS ARE APPROXIMATE, ACTUAL MAY VARY.

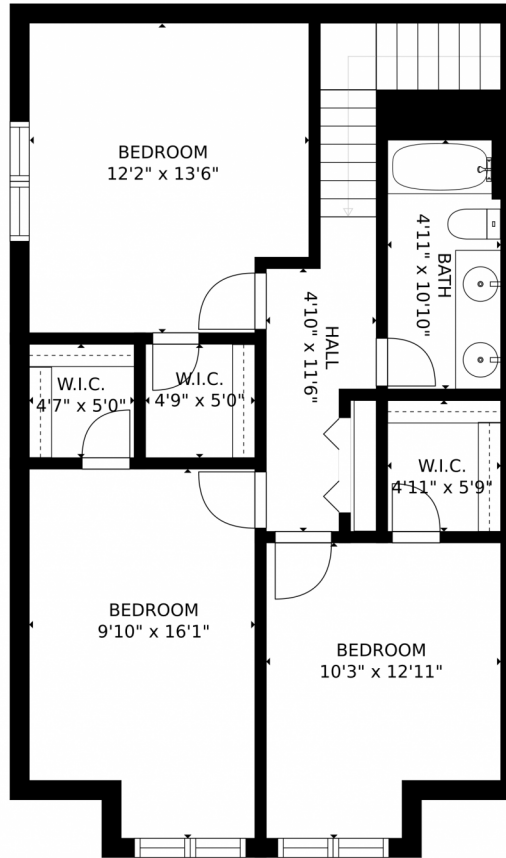
Disclaimer: Sizes and Dimensions are Approximate, Actual May Vary.



Carolyn Tracy
720-495-9229
caroltracy105@hotmail.com



1094 McIntosh Avenue, Broomfield, CO 80020 – 2nd Story



GROSS INTERNAL AREA
FLOOR 1: 1385 sq. ft, FLOOR 2: 1470 sq. ft
FLOOR 3: 712 sq. ft, EXCLUDED AREAS:
PATIO: 151 sq. ft, DECK: 234 sq. ft
PORCH: 39 sq. ft, GARAGE: 555 sq. ft
TOTAL: 3567 sq. ft
SIZES AND DIMENSIONS ARE APPROXIMATE, ACTUAL MAY VARY.

Disclaimer: Sizes and Dimensions are Approximate, Actual May Vary.



Carolyn Tracy
720-495-9229
caroltracy105@hotmail.com



1094 McIntosh Avenue, Broomfield, CO 80020 – All Floors



SIZES AND DIMENSIONS ARE APPROXIMATE, ACTUAL MAY VARY.

Disclaimer: Sizes and Dimensions are Approximate, Actual May Vary.



Carolyn Tracy
720-495-9229
caroltracy105@hotmail.com



Scan code
for more
property
details