



9622 West 69th Place  
Arvada, CO 80004



Single Family



3000 SQFT



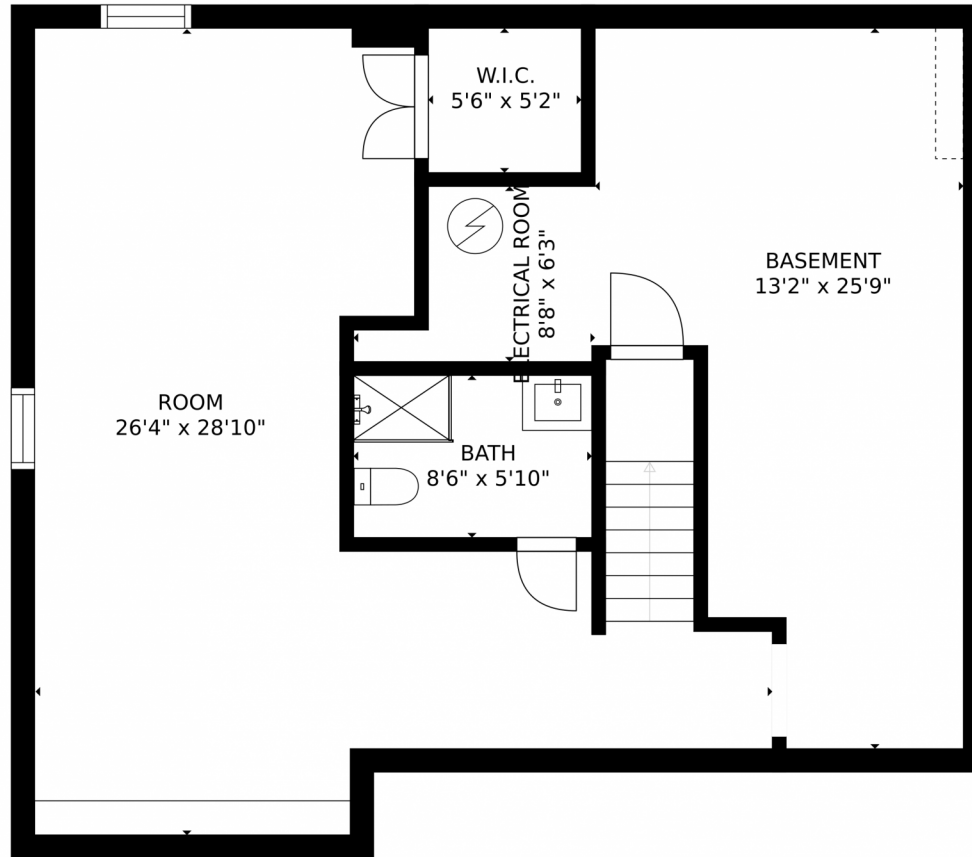
**Robbin Merta**  
303-917-7143  
robbin@elevatedrealestate.com



Scan code  
for more  
property  
details



9622 West 69th Place, Arvada, CO 80004 – Lower Level



GROSS INTERNAL AREA  
FLOOR 1: 890 sq. ft, FLOOR 2: 1227 sq. ft  
FLOOR 3: 1004 sq. ft, EXCLUDED AREAS:  
PATIO: 1096 sq. ft, PORCH: 96 sq. ft  
GARAGE: 391 sq. ft  
TOTAL: 3122 sq. ft  
SIZES AND DIMENSIONS ARE APPROXIMATE, ACTUAL MAY VARY.

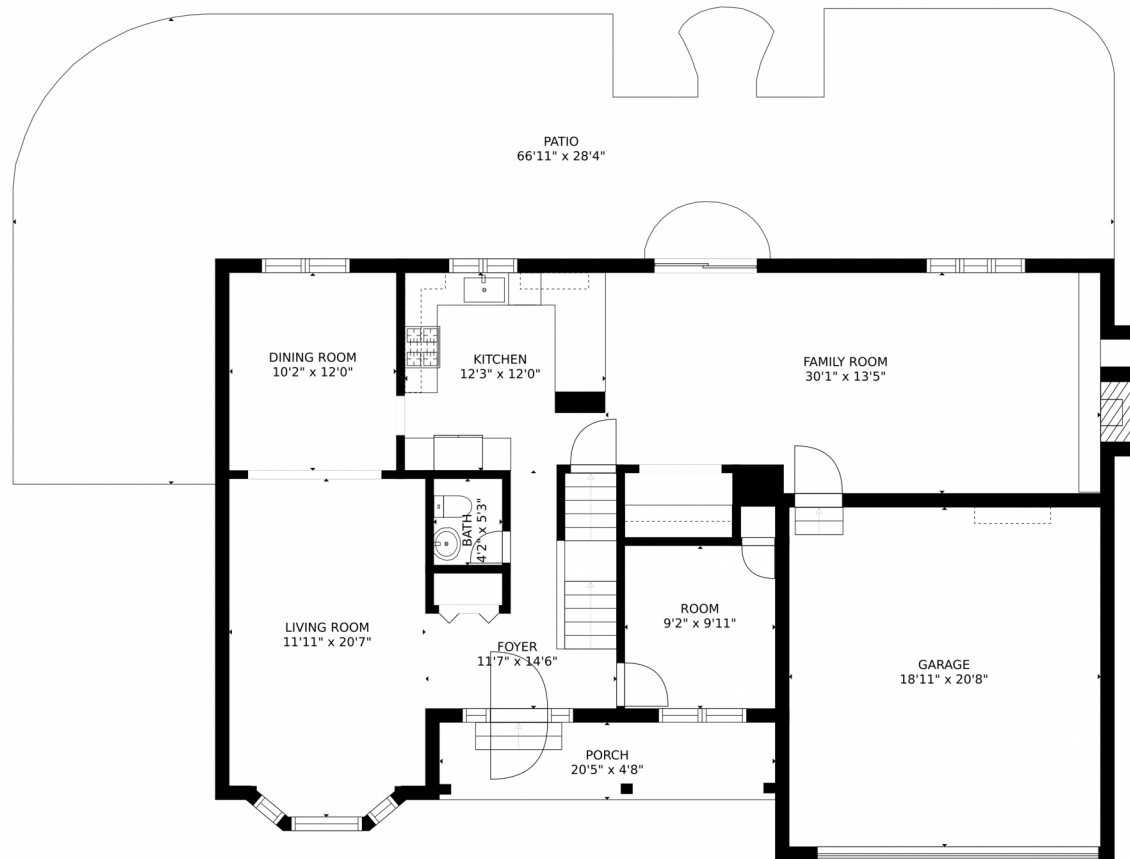
Disclaimer: Sizes and Dimensions are Approximate, Actual May Vary.



**Robbin Merta**  
303-917-7143  
robbin@elevatedrealestate.com



# 9622 West 69th Place, Arvada, CO 80004 – Main Level



GROSS INTERNAL AREA  
FLOOR 1: 890 sq. ft, FLOOR 2: 1227 sq. ft  
FLOOR 3: 1004 sq. ft, EXCLUDED AREAS:  
PATIO: 1096 sq. ft, PORCH: 96 sq. ft  
GARAGE: 391 sq. ft  
TOTAL: 3122 sq. ft  
SIZES AND DIMENSIONS ARE APPROXIMATE, ACTUAL MAY VARY.

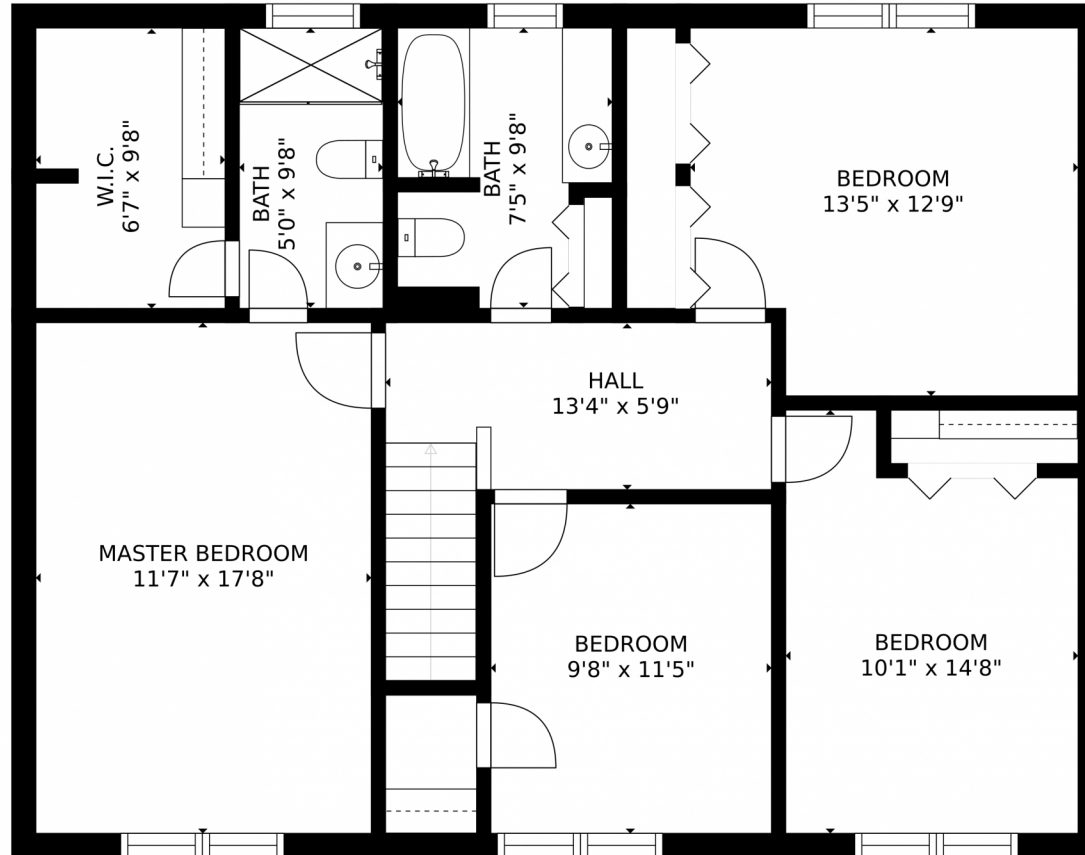
Disclaimer: Sizes and Dimensions are Approximate, Actual May Vary.



**Robbin Merta**  
303-917-7143  
robbin@elevatedrealestate.com



9622 West 69th Place, Arvada, CO 80004 – 2nd Story



GROSS INTERNAL AREA  
FLOOR 1: 890 sq. ft, FLOOR 2: 1227 sq. ft  
FLOOR 3: 1004 sq. ft, EXCLUDED AREAS:  
PATIO: 1096 sq. ft, PORCH: 96 sq. ft  
GARAGE: 391 sq. ft  
TOTAL: 3122 sq. ft  
SIZES AND DIMENSIONS ARE APPROXIMATE, ACTUAL MAY VARY.

Disclaimer: Sizes and Dimensions are Approximate, Actual May Vary.



**Robbin Merta**  
303-917-7143  
robbin@elevatedrealestate.com



# 9622 West 69th Place, Arvada, CO 80004 – All Floors



SIZES AND DIMENSIONS ARE APPROXIMATE, ACTUAL MAY VARY.

Disclaimer: Sizes and Dimensions are Approximate, Actual May Vary.



**Robbin Merta**  
303-917-7143  
robbin@elevatedrealestate.com

