



8180 Garland Drive  
Arvada, CO 80005

PRICE \$615,000

8180 Garland Avenue, Arvada



Single Family



2164 SQFT



4 Beds



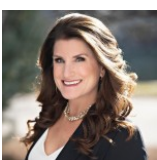
2/1 Baths



2 Car

## PROPERTY DETAILS

This is the house you've been waiting for! Move-in ready with a gorgeous, over-sized and private back yard, filled with mature landscaping, numerous fruit trees and no rear neighbors. Plenty of room for your toys with RV parking in addition to the epoxy-coated, two car garage with newer garage door, and two detached storage sheds for more storage and/or garden supplies. The home is filled with light and walls of windows, and features a large, functional kitchen overlooking one of the many backyard patios, including a covered patio to enjoy those Colorado evenings. Newer carpeting in the main living areas, an efficient gas fireplace, and updated bathrooms make this home move-in ready. Homeowners have lovingly cared for this home, and it is neat as a pin.

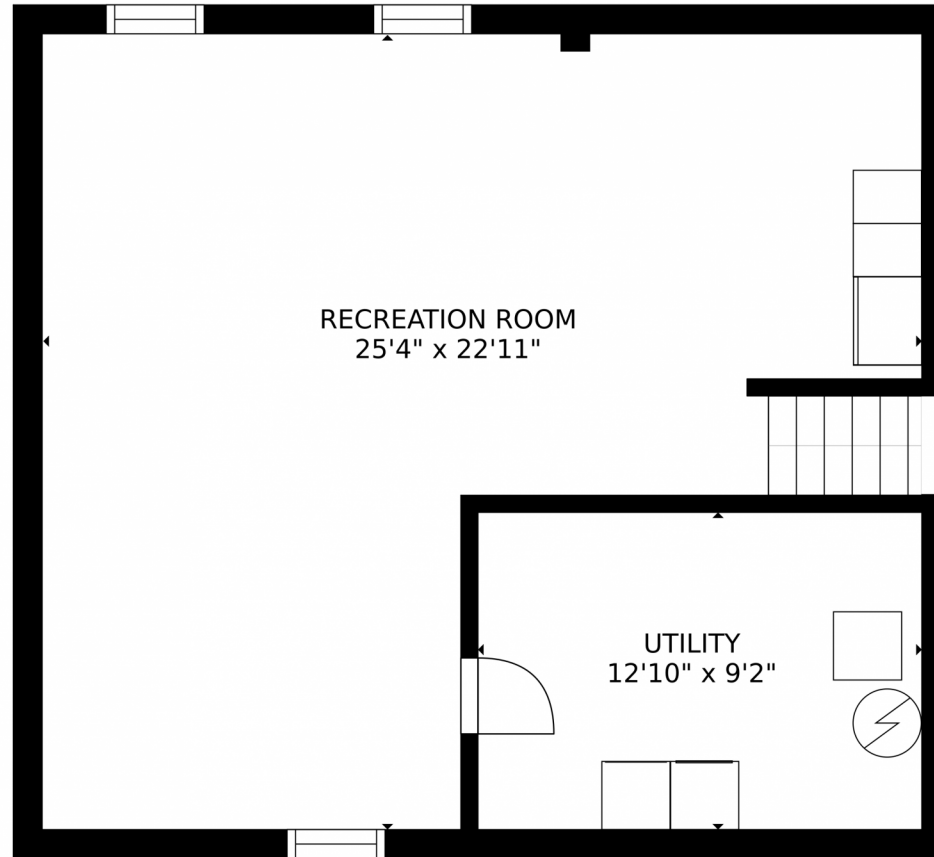


**Julie Berghoff**  
303-641-0389  
julieb1@remax.net



Scan code  
for more  
property  
details





GROSS INTERNAL AREA  
FLOOR 1: 586 sq. ft, FLOOR 2: 1021 sq. ft  
FLOOR 3: 932 sq. ft, EXCLUDED AREAS:  
PATIO: 1047 sq. ft, GARAGE: 407 sq. ft  
TOTAL: 2539 sq. ft  
SIZES AND DIMENSIONS ARE APPROXIMATE, ACTUAL MAY VARY.

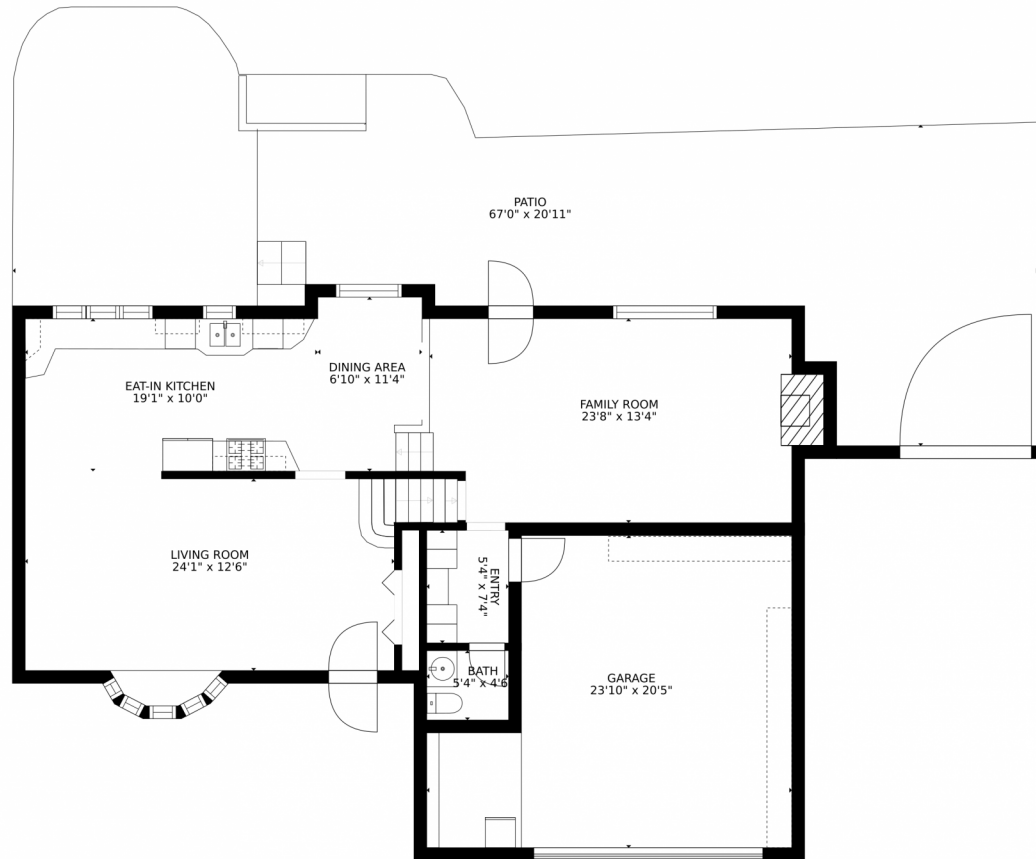
Disclaimer: Sizes and Dimensions are Approximate, Actual May Vary.



**Julie Berghoff**  
303-641-0389  
julieb1@remax.net



8180 Garland Drive, Arvada, CO 80005 – Main Floor



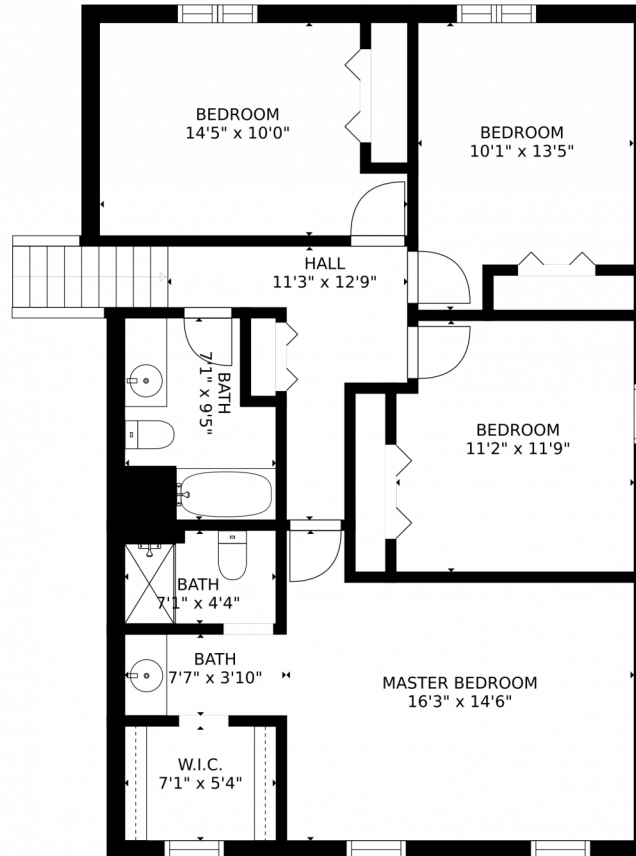
GROSS INTERNAL AREA  
FLOOR 1: 586 sq. ft, FLOOR 2: 1021 sq. ft  
FLOOR 3: 932 sq. ft, EXCLUDED AREAS:  
PATIO: 1047 sq. ft, GARAGE: 407 sq. ft  
TOTAL: 2539 sq. ft  
SIZES AND DIMENSIONS ARE APPROXIMATE, ACTUAL MAY VARY.

Disclaimer: Sizes and Dimensions are Approximate, Actual May Vary.



**Julie Berghoff**  
303-641-0389  
julieb1@remax.net





GROSS INTERNAL AREA  
FLOOR 1: 586 sq. ft, FLOOR 2: 1021 sq. ft  
FLOOR 3: 932 sq. ft, EXCLUDED AREAS:  
PATIO: 1047 sq. ft, GARAGE: 407 sq. ft  
TOTAL: 2539 sq. ft  
SIZES AND DIMENSIONS ARE APPROXIMATE, ACTUAL MAY VARY.

Disclaimer: Sizes and Dimensions are Approximate, Actual May Vary.

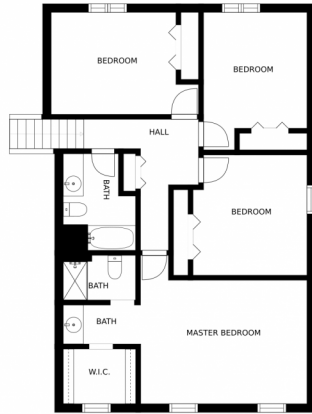


**Julie Berghoff**  
303-641-0389  
julieb1@remax.net

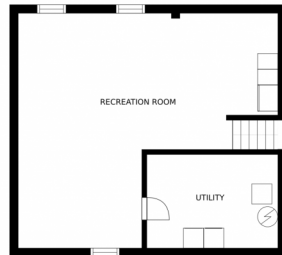


Scan code  
for more  
property  
details

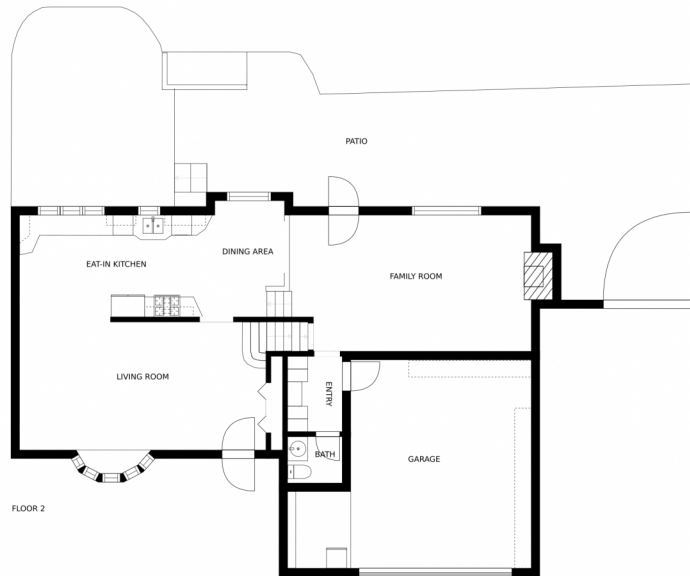
# 8180 Garland Drive, Arvada, CO 80005 – All Floors



FLOOR 3



FLOOR 1



FLOOR 2

SIZES AND DIMENSIONS ARE APPROXIMATE, ACTUAL MAY VARY.

Disclaimer: Sizes and Dimensions are Approximate, Actual May Vary.



**Julie Berghoff**  
303-641-0389  
julieb1@remax.net



Scan code  
for more  
property  
details