



5627 S Ireland Way  
 Centennial, CO 80015  
 COMMUNITY: Park View Commons

MLS # 5198391  
 PRICE \$450,000



Single Family   1959 SQFT   4 Beds   2/1 Baths   2 Car   0.11 Acre

## PROPERTY DETAILS

Welcome Home to Park View Commons and this immaculate 2-story beauty is arguably the most turnkey-ready home listed. New flooring throughout the main level! New interior and exterior paint! New Deck! All appliances are included, even the washer and dryer! A thoughtfully designed main level greets you to the cheerful formal living room further leading to an open concept, great room style connected kitchen, eat-in dining area, and family room making this space an entertainer's paradise. Upstairs an expansive owner's suite awaits boasting plenty of room for many furniture design options along with a private ensuite bath. Two generously sized additional bedrooms and a secondary full bath complete the upper level of this introspective layout. The basement is partially finished offering a fourth bedroom and tons of storage space. You will love entertaining in the backyard and outdoor living space complete with a dual-level deck offering tons of space for any patio furniture imaginable along with a firepit area toward the corner of the yard and plenty of grassed space for lounge or play. Park View Community has it all just minutes from E-470, Southlands Mall, Aurora Reservoir, and the Saddle Rock Golf Course are all practically in your backyard! Miles and miles of trails intertwine connecting you to your neighborhood and beyond, opting outside is never a problem in Park View. Cool off during the Summer at Lookout Swimming Pool or get in some playtime at the park. Park View



**Tatyana Sturm**  
 720-350-5909  
 tatyana@exitrealttydtc.com  
 https://thestorckteam.com



is also home to a community-only pool along with the award-winning education system of Cherry Creek Schools. Enjoy endless dining, shopping, and entertainment options in the Southlands Outdoor Retail District featuring a full AMC Dine-In Movie Theater, abundant casual dining options along with higher-end restaurant options as well, and so many shopping choices. The Southlands Mall also features a robust courtyard area with a mini splash park in the Summer and a skating rink in the Winter.

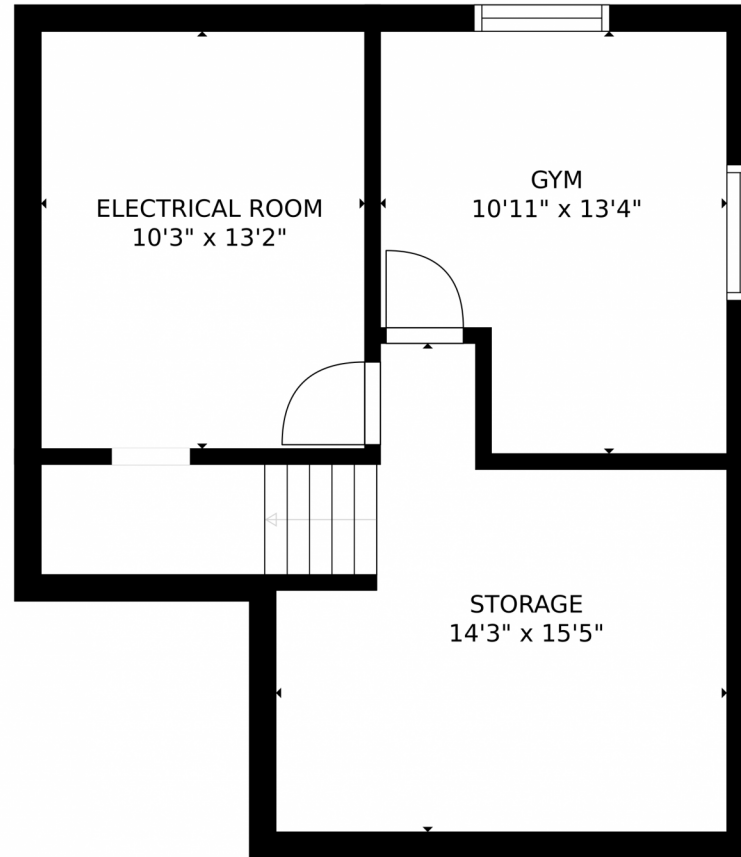


**Tatyana Sturm**  
720-350-5909  
tatyana@exitrealtydtc.com  
<https://thestorckteam.com>



Scan code  
for more  
property  
details





GROSS INTERNAL AREA  
FLOOR 1: 487 sq. ft. FLOOR 2: 786 sq. ft.  
FLOOR 3: 700 sq. ft. EXCLUDED AREAS:  
DECK: 204 sq. ft. PORCH: 12 sq. ft.  
GARAGE: 394 sq. ft.  
TOTAL: 1973 sq. ft.  
SIZES AND DIMENSIONS ARE APPROXIMATE, ACTUAL MAY VARY.

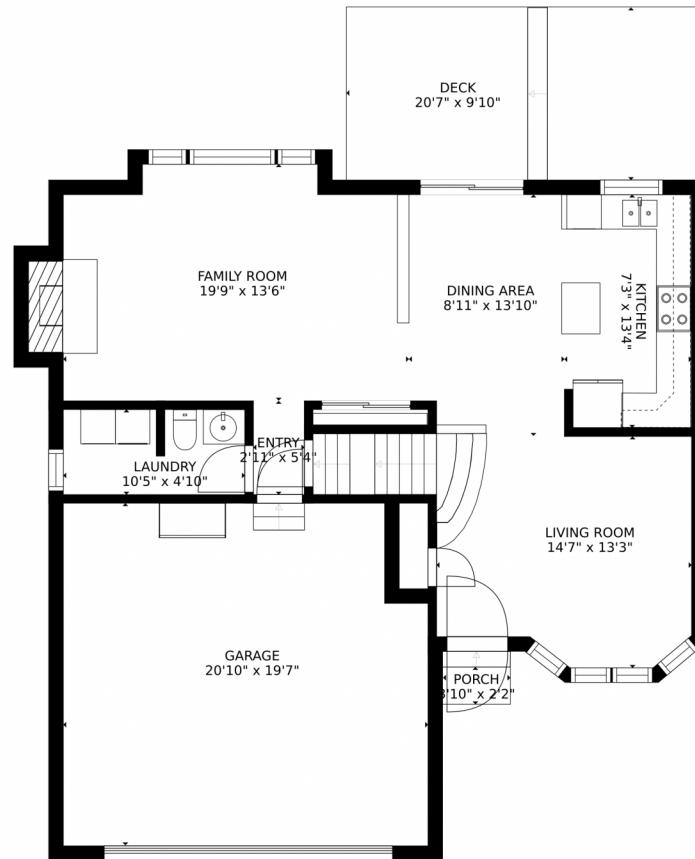
Disclaimer: Sizes and Dimensions are Approximate, Actual May Vary.



**Tatyana Sturm**  
720-350-5909  
tatyana@exitrealtydtc.com  
<https://thestorckteam.com>



# 5627 S Ireland Way, Centennial, CO 80015 – Main Level



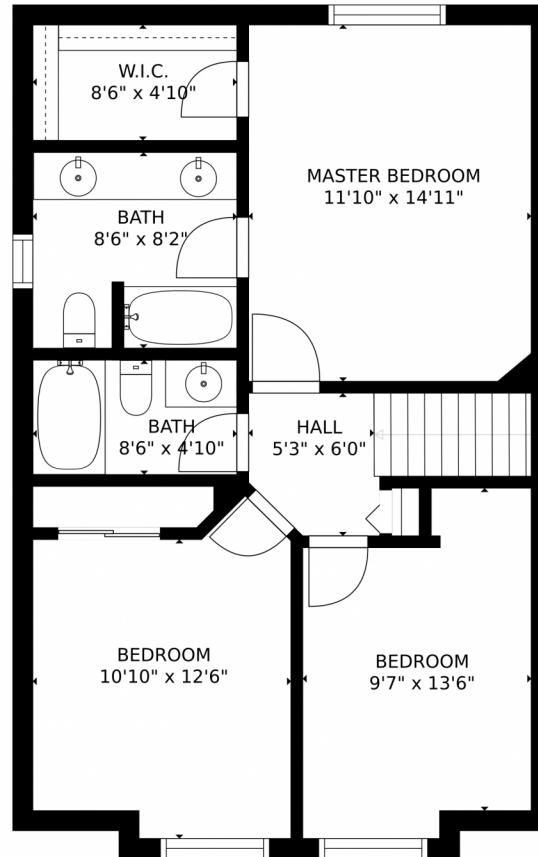
GROSS INTERNAL AREA  
FLOOR 1: 487 sq. ft. FLOOR 2: 786 sq. ft.  
FLOOR 3: 700 sq. ft. EXCLUDED AREAS:  
DECK: 204 sq. ft. PORCH: 12 sq. ft.  
GARAGE: 394 sq. ft.  
TOTAL: 1973 sq. ft.  
SIZES AND DIMENSIONS ARE APPROXIMATE, ACTUAL MAY VARY.

Disclaimer: Sizes and Dimensions are Approximate, Actual May Vary.



**Tatyana Sturm**  
720-350-5909  
tatyana@exitrealttydc.com  
<https://thestorckteam.com>





GROSS INTERNAL AREA  
FLOOR 1: 487 sq. ft. FLOOR 2: 786 sq. ft.  
FLOOR 3: 700 sq. ft. EXCLUDED AREAS:  
DECK: 204 sq. ft. PORCH: 12 sq. ft.  
GARAGE: 394 sq. ft.  
TOTAL: 1973 sq. ft.  
SIZES AND DIMENSIONS ARE APPROXIMATE, ACTUAL MAY VARY.

Disclaimer: Sizes and Dimensions are Approximate, Actual May Vary.



**Tatyana Sturm**  
720-350-5909  
tatyana@exitrealtydtc.com  
<https://thestorckteam.com>





SIZES AND DIMENSIONS ARE APPROXIMATE, ACTUAL MAY VARY.

Disclaimer: Sizes and Dimensions are Approximate, Actual May Vary.



**Tatyana Sturm**  
720-350-5909  
tatyana@exitrealtydtc.com  
<https://thestorckteam.com>



Scan code  
for more  
property  
details