



5312 S Danube Court  
Centennial, CO 80015

MLS # 6983631  
PRICE \$500,000



Single Family



2299 SQFT



4 Beds



2/1 Baths



2 Car



0.11 Acre

## PROPERTY DETAILS

An expansive covered front porch greets you upon arrival to this 4 bedroom home complete with a finished basement and nearly 2,200 square feet of living space. The open and inviting layout boasts new carpet throughout and laminate flooring on the main level, a new stainless dishwasher and stove, updated bathrooms, and interior paint that has been completely refreshed! The roof and furnace are also just a few years old! A welcoming main level showcases not one but two spacious living spaces along with a formal dining area and breakfast nook making with floor plan an entertainer's dream. Upstairs you will find an expansive owner's retreat complete with a newly remastered private bath and generously sized walk-in closet for your every storage need. Two additional bedrooms and a secondary full bath finish the upper level of this thoughtfully planned home. The backyard and outdoor living space are truly an entertainer's paradise showcasing an expansive dual-level deck with plenty of space for any patio furniture imaginable along with a sizable grassed yard perfect for lounge or play. You will love living in Jackson Farm with easy access to all major highways via Parker Road making any commute whether Downtown or into the DTC a breeze along with Southlands Mall, both Aurora and Cherry Creek Reservoirs, also within walking distance to the Smoky Hill Public Library. Residents of Jackson Farm enjoy the award-winning education system of Cherry Creek School District including Peakview Elementary which is centrally located within the community and within a 6-minute walk from the



**Tatyana Sturm**

720-350-5909

tatyana@exitrealtydtc.com

<https://thestorckteam.com>



Scan code  
for more  
property  
details



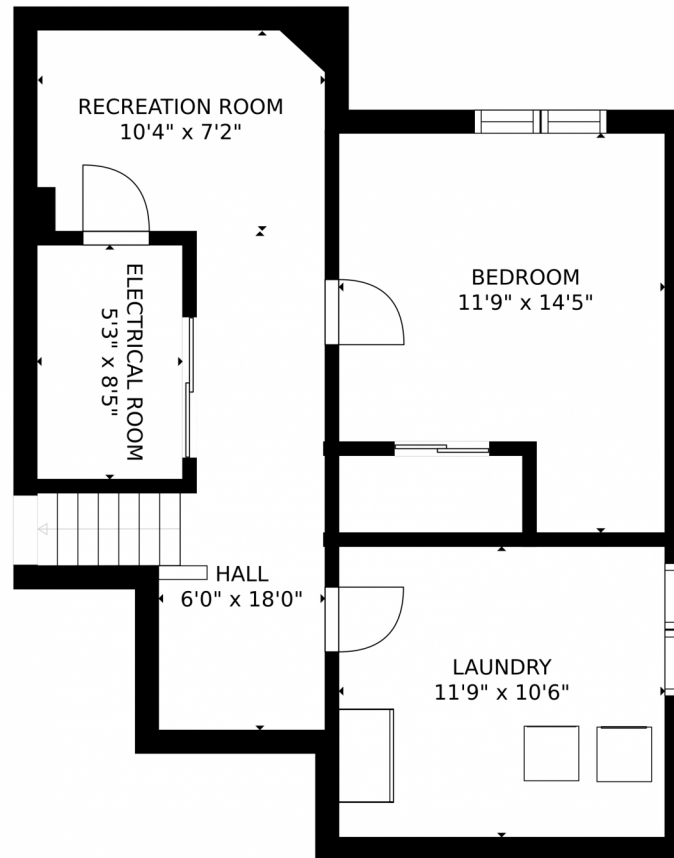
home. Enjoy endless dining, shopping, and entertainment options in the Southlands Outdoor Retail District featuring a full AMC Dine-In Movie Theater, abundant casual dining options along with higher-end restaurant options as well, and so many shopping choices. The Southlands Mall also features a robust courtyard area with a mini splash park in the Summer and a skating rink in the Winter.



**Tatyana Sturm**  
720-350-5909  
tatyana@exitrealtydtc.com  
<https://thestorckteam.com>



Scan code  
for more  
property  
details



GROSS INTERNAL AREA  
FLOOR 1: 546 sq. ft. FLOOR 2: 894 sq. ft.  
FLOOR 3: 821 sq. ft. EXCLUDED AREAS:  
GARAGE: 380 sq. ft.  
TOTAL: 2261 sq. ft.  
SIZES AND DIMENSIONS ARE APPROXIMATE, ACTUAL MAY VARY.

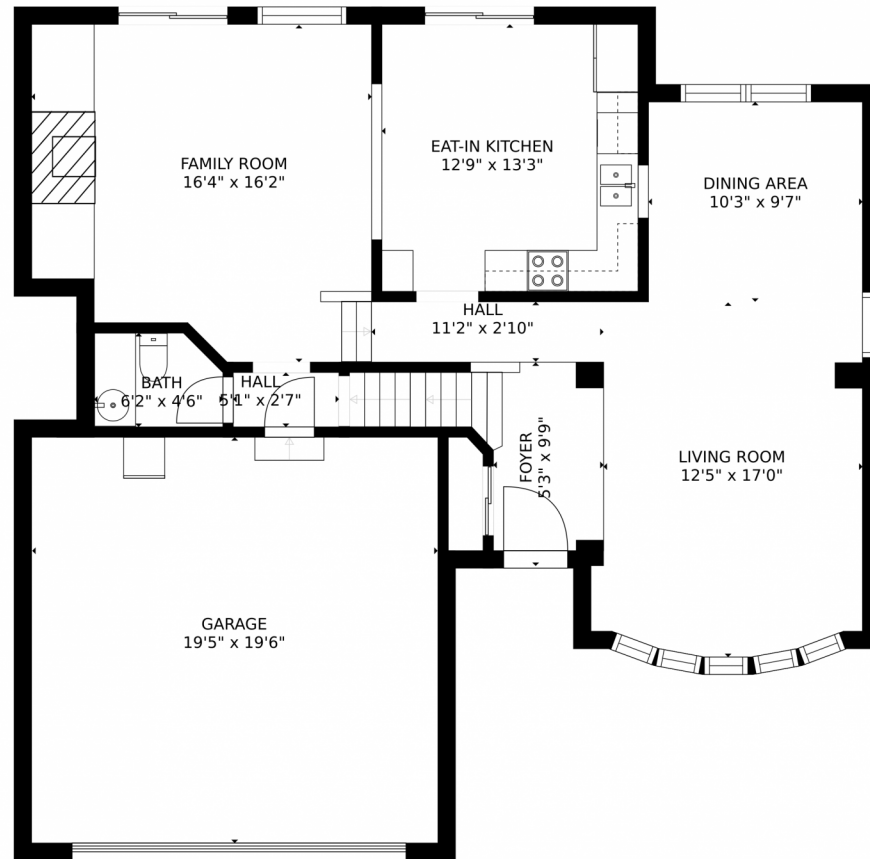
Disclaimer: Sizes and Dimensions are Approximate, Actual May Vary.



**Tatyana Sturm**  
720-350-5909  
tatyana@exitrealtydtc.com  
<https://thestorckteam.com>



# 5312 S Danube Court, Centennial, CO 80015 – Main Floor



GROSS INTERNAL AREA  
FLOOR 1: 546 sq. ft. FLOOR 2: 894 sq. ft.  
FLOOR 3: 821 sq. ft. EXCLUDED AREAS:  
GARAGE: 380 sq. ft.  
TOTAL: 2261 sq. ft.  
SIZES AND DIMENSIONS ARE APPROXIMATE, ACTUAL MAY VARY.

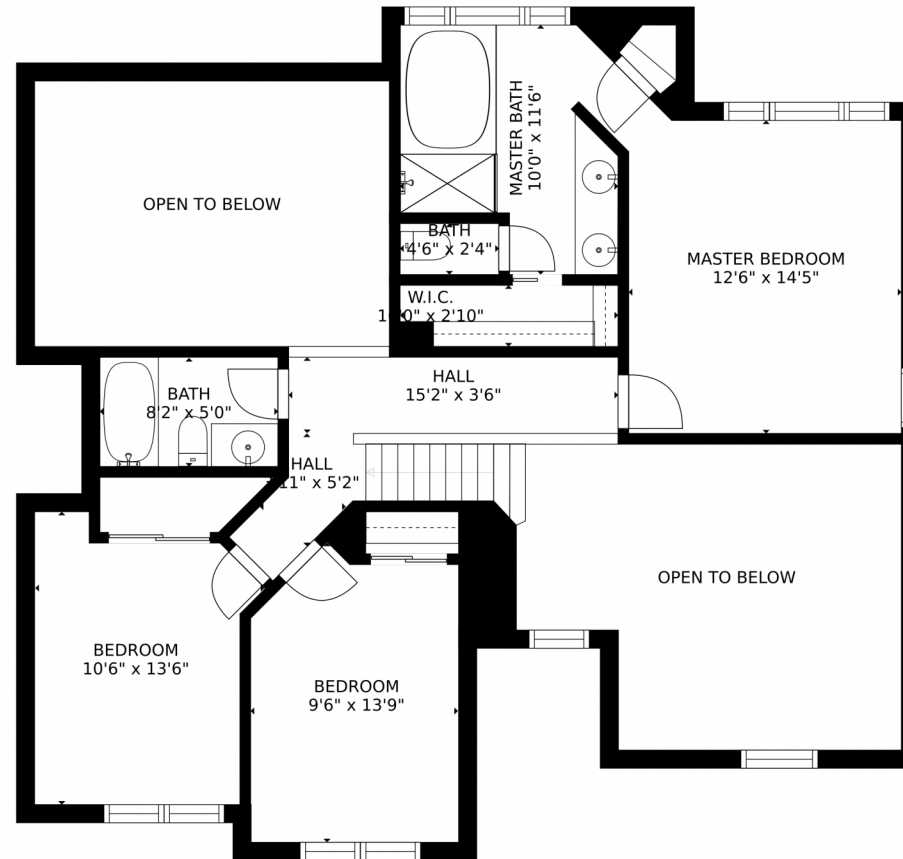
Disclaimer: Sizes and Dimensions are Approximate, Actual May Vary.



**Tatyana Sturm**  
720-350-5909  
tatyana@exitrealttydc.com  
<https://thestorckteam.com>



5312 S Danube Court, Centennial, CO 80015 – Second Floor



GROSS INTERNAL AREA  
FLOOR 1: 546 sq. ft. FLOOR 2: 894 sq. ft.  
FLOOR 3: 821 sq. ft. EXCLUDED AREAS:  
GARAGE: 380 sq. ft.  
TOTAL: 2261 sq. ft.  
SIZES AND DIMENSIONS ARE APPROXIMATE, ACTUAL MAY VARY.

Disclaimer: Sizes and Dimensions are Approximate, Actual May Vary.



**Tatyana Sturm**  
720-350-5909  
tatyana@exitrealtydc.com  
<https://thestorckteam.com>



# 5312 S Danube Court, Centennial, CO 80015 – All Floors



GROSS INTERNAL AREA  
FLOOR 1: 546 sq. ft, FLOOR 2: 894 sq. ft  
FLOOR 3: 821 sq. ft, EXCLUDED AREAS:  
GARAGE: 380 sq. ft  
TOTAL: 2261 sq. ft

SIZES AND DIMENSIONS ARE APPROXIMATE, ACTUAL MAY VARY.

Disclaimer: Sizes and Dimensions are Approximate, Actual May Vary.



**Tatyana Sturm**  
720-350-5909  
tatyana@exitrealtydtc.com  
<https://thestorckteam.com>

