



3840 Jebel Street
Denver, CO 80249

MLS # 5056383
PRICE \$500,000



Single Family



2647 SQFT



4 Beds



2/1 Baths



3 Car



0.23 Acre

PROPERTY DETAILS

Located upon a quiet cul-de-sac in the Southeastern corner of Green Valley Ranch, this glorious 2-story abode sparkles at every turn with brand new carpet and interior paint throughout! A massive formal living room greets you showcasing 2-story cathedral ceilings gently transitioning into the formal dining area. An open great room concept kitchen and family room are beautifully connected making this space fantastic for entertaining. The laundry and a half bath are perfectly placed just inside of the garage entry. Upstairs you will find your personal tranquil oasis in the owner's suite complete with a private 5-piece bath and over-sized walk-in closet. Three additional bedrooms including a home office style bedroom with glass French-door entry and a secondary full bath finalize the upper level of this thoughtfully planned layout. Your next Summer BBQ with family and friends is guaranteed to be a success in this large backyard and outdoor living space complete with an expansive flagstone patio and tons of space for lounge or play. Have it all in Green Valley Ranch starting with an easy commute no matter if you're headed Downtown or to the DTC via I-70, and DIA is even just a short 20-minute drive. A multitude of community parks is found in Green Valley Ranch along with miles upon miles of trails for the biker and the hiker in your home. Enjoy a day of golf at the Green Valley Ranch Golf Club or endless recreation at the Rec Center offering an indoor pool, group fitness classes, and a massive fitness center. The South entrance to the Rocky Mountain Arsenal National Wildlife Refuge is also just minutes



Tatyana Sturm

720-350-5909

tatyana@exitrealttydtc.com

<https://thestorckteam.com>



Scan code
for more
property
details



away where you can enjoy award-winning fishing, 10 miles of hiking and biking trails, and driving tracks where you can view many of America's most famous prairie wildlife including bison, deer, and many species of birds. Any commute is a snap with easy accessibility to Pena Blvd and I-70, whether you are working at DIA or Downtown you can get there worry-free.



Tatyana Sturm

720-350-5909

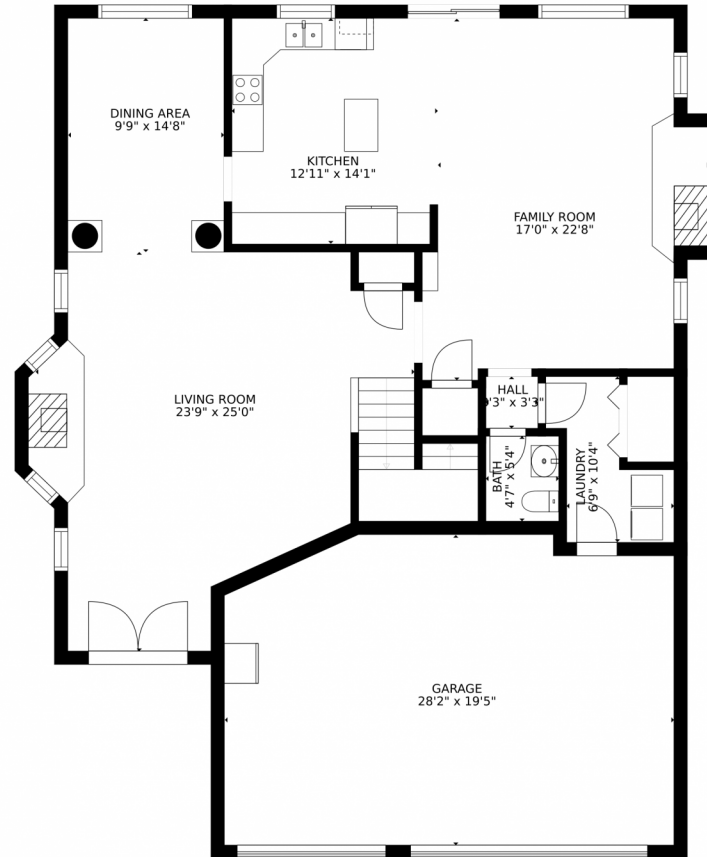
tatyana@exitrealtydtc.com

<https://thestorckteam.com>



Scan code
for more
property
details

3840 Jebel Street, Denver, CO 80249 – Main Floor



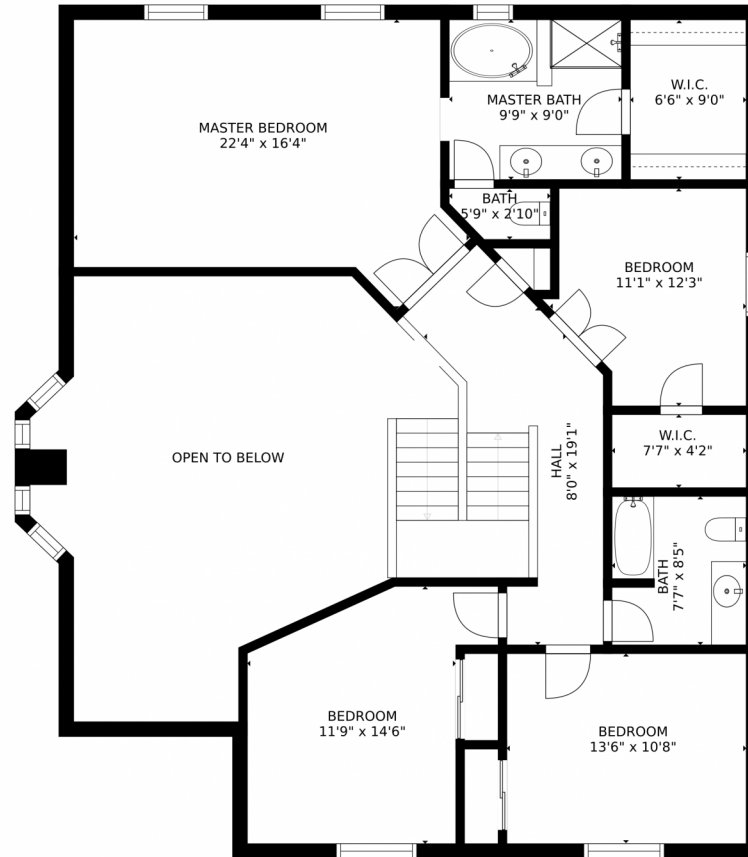
GROSS INTERNAL AREA
FLOOR 1: 1333 sq. ft, FLOOR 2: 1291 sq. ft
EXCLUDED AREAS: , GARAGE: 522 sq. ft
TOTAL: 2624 sq. ft
SIZES AND DIMENSIONS ARE APPROXIMATE, ACTUAL MAY VARY.

Disclaimer: Sizes and Dimensions are Approximate, Actual May Vary.



Tatyana Sturm
720-350-5909
tatyana@exitrealttydc.com
<https://thestorckteam.com>





GROSS INTERNAL AREA
FLOOR 1: 1333 sq. ft, FLOOR 2: 1291 sq. ft
EXCLUDED AREAS: , GARAGE: 522 sq. ft
TOTAL: 2624 sq. ft
SIZES AND DIMENSIONS ARE APPROXIMATE, ACTUAL MAY VARY.

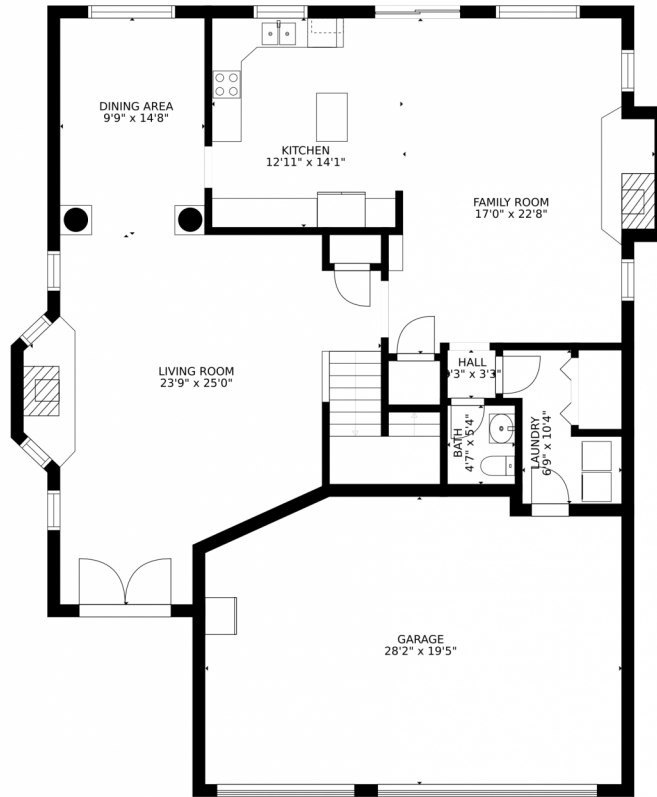
Disclaimer: Sizes and Dimensions are Approximate, Actual May Vary.



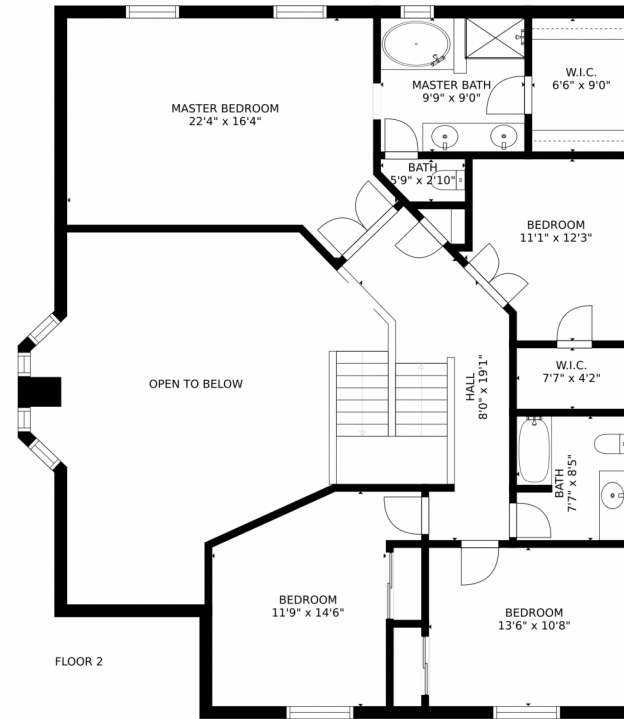
Tatyana Sturm
720-350-5909
tatyana@exitrealtydtc.com
<https://thestorckteam.com>



3840 Jebel Street, Denver, CO 80249 – All Floors



FLOOR 1



FLOOR 2

GROSS INTERNAL AREA
FLOOR 1: 1333 sq. ft, FLOOR 2: 1291 sq. ft
EXCLUDED AREAS: , GARAGE: 522 sq. ft
TOTAL: 2624 sq. ft
SIZES AND DIMENSIONS ARE APPROXIMATE, ACTUAL MAY VARY.

Disclaimer: Sizes and Dimensions are Approximate, Actual May Vary.



Tatyana Sturm
720-350-5909
tatyana@exitrealttydc.com
<https://thestorckteam.com>



Scan code
for more
property
details

