

Single Family



3900 SQFT

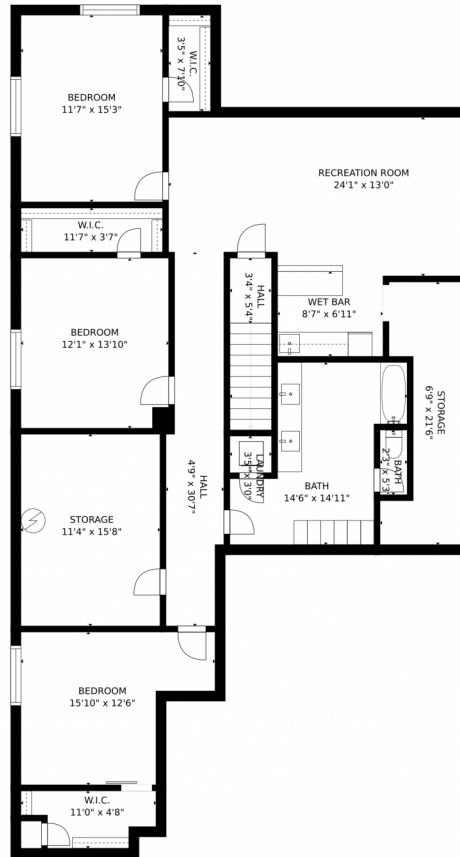
Andrea Green
720-937-8685
andrea.green@exprealty.com



Scan code
for more
property
details



4270 Forever Circle, Castle Rock, CO 80109 – Basement



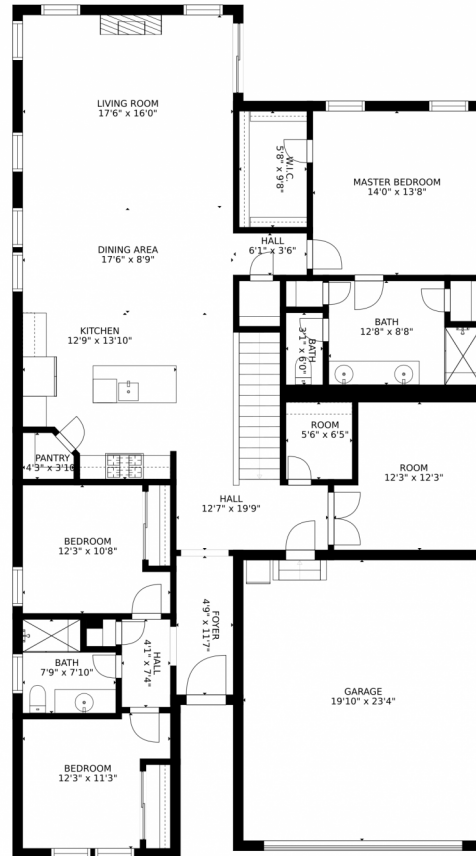
GROSS INTERNAL AREA
FLOOR 1: 1720 sq. ft, FLOOR 2: 1900 sq. ft
EXCLUDED AREAS: , GARAGE: 462 sq. ft
TOTAL: 3620 sq. ft
SIZES AND DIMENSIONS ARE APPROXIMATE, ACTUAL MAY VARY.

Disclaimer: Sizes and Dimensions are Approximate, Actual May Vary.

Andrea Green
720-937-8685
andrea.green@exprealty.com



4270 Forever Circle, Castle Rock, CO 80109 – Main Floor



GROSS INTERNAL AREA
FLOOR 1: 1720 sq. ft, FLOOR 2: 1900 sq. ft
EXCLUDED AREAS: , GARAGE: 462 sq. ft
TOTAL: 3620 sq. ft
SIZES AND DIMENSIONS ARE APPROXIMATE, ACTUAL MAY VARY.

Disclaimer: Sizes and Dimensions are Approximate, Actual May Vary.

Andrea Green
720-937-8685
andrea.green@exprealty.com



4270 Forever Circle, Castle Rock, CO 80109 – All Floors



GROSS INTERNAL AREA
FLOOR 1: 1720 sq. ft, FLOOR 2: 1900 sq. ft
EXCLUDED AREAS: , GARAGE: 462 sq. ft
TOTAL: 3620 sq. ft
SIZES AND DIMENSIONS ARE APPROXIMATE, ACTUAL MAY VARY.

Disclaimer: Sizes and Dimensions are Approximate, Actual May Vary.

Andrea Green
720-937-8685
andrea.green@exprealty.com

