



Single Family



4048 SQFT



4 Beds



3/1 Baths



2 Car



0.14 Acre

PROPERTY DETAILS

Welcome to the best of modern luxury in the heart of Cory-Merrill. No detail has been overlooked in the spacious, light + bright custom home on a corner lot featuring a gourmet kitchen with gleaming quartz counters and Thermador appliances, Kohler bath fixtures, hardwood floors, high ceilings, and architectural touches throughout - open riser white oak staircase highlighted by 2 walls of 2-story windows, custom living room fireplace mantle, the perfect work-from-home office & much more. Upstairs you'll find 3 bedrooms, including a spacious primary suite with vaulted ceiling, 5-piece luxury bath, walk-in closet and mountain views. The designer-finished basement features a spacious family-entertaining room, bedroom, full bath, and 1,150 bottle temperature-controlled wine cellar. As the front overflows with custom landscaped curb appeal, you'll also enjoy the shaded



Jay Kalinski
 303-489-1050
 jaykalinski@gmail.com



Scan code
 for more
 property
 details



SW-facing patio & backyard that are perfect for entertaining. Modern Denver chic at its finest.



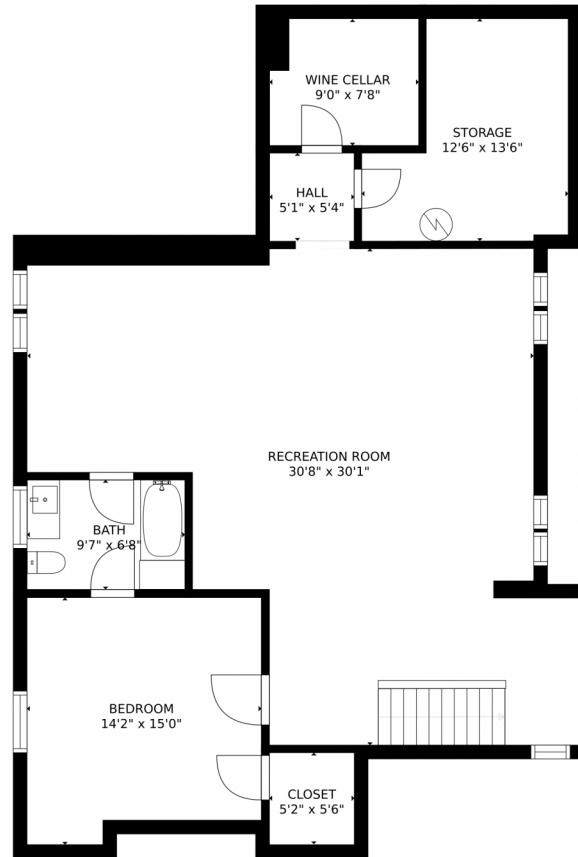
Jay Kalinski
303-489-1050
jaykalinski@gmail.com



Scan code
for more
property
details



1601 S Monroe Street, Denver, CO 80210 – Lower Level



GROSS INTERNAL AREA
FLOOR 1: 1301 sq. ft. FLOOR 2: 1446 sq. ft.
FLOOR 3: 1301 sq. ft. EXCLUDED AREAS:
PATIO: 214 sq. ft. PORCH: 149 sq. ft.
GARAGE: 466 sq. ft.
TOTAL: 4049 sq. ft.
SIZES AND DIMENSIONS ARE APPROXIMATE, ACTUAL MAY VARY.

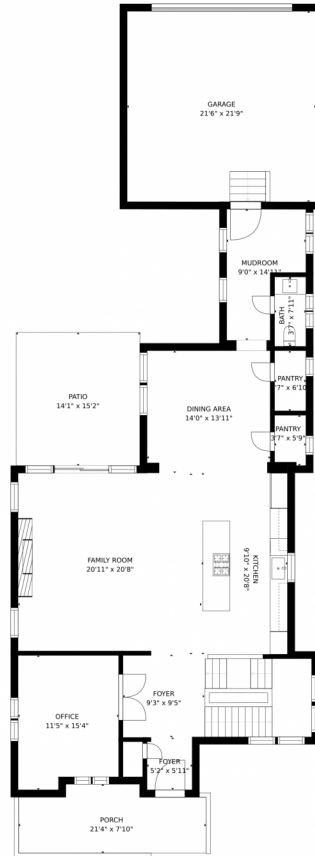
Disclaimer: Sizes and Dimensions are Approximate, Actual May Vary.



Jay Kalinski
303-489-1050
jaykalinski@gmail.com



1601 S Monroe Street, Denver, CO 80210 – Main Level



GROSS INTERNAL AREA
FLOOR 1: 1301 sq. ft, FLOOR 2: 1446 sq. ft
FLOOR 3: 1301 sq. ft, EXCLUDED AREAS:
PATIO: 214 sq. ft, PORCH: 149 sq. ft
GARAGE: 466 sq. ft
TOTAL: 4049 sq. ft
SIZES AND DIMENSIONS ARE APPROXIMATE, ACTUAL MAY VARY.

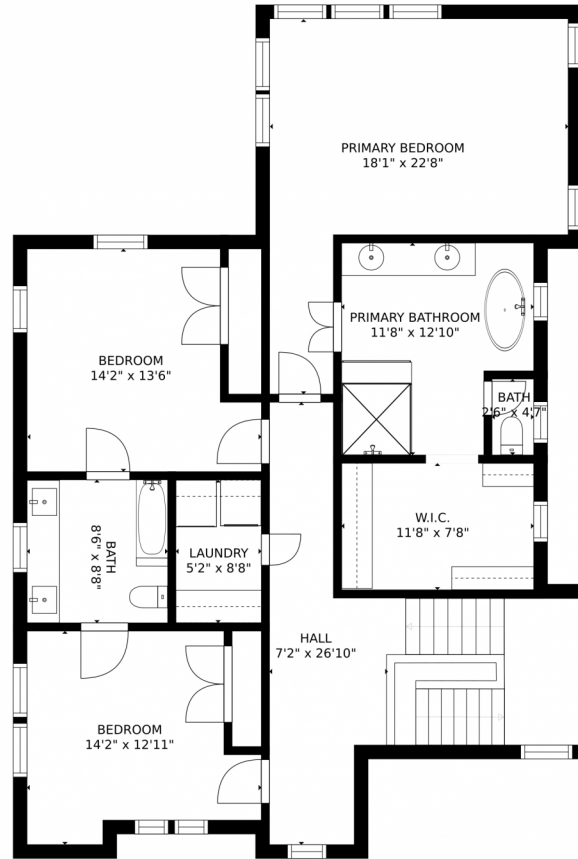
Disclaimer: Sizes and Dimensions are Approximate, Actual May Vary.



Jay Kalinski
303-489-1050
jaykalinski@gmail.com



1601 S Monroe Street, Denver, CO 80210 – 2nd Story



GROSS INTERNAL AREA
FLOOR 1: 1301 sq. ft, FLOOR 2: 1446 sq. ft
FLOOR 3: 1301 sq. ft, EXCLUDED AREAS:
PATIO: 214 sq. ft, PORCH: 149 sq. ft
GARAGE: 466 sq. ft
TOTAL: 4049 sq. ft
SIZES AND DIMENSIONS ARE APPROXIMATE, ACTUAL MAY VARY.

Disclaimer: Sizes and Dimensions are Approximate, Actual May Vary.

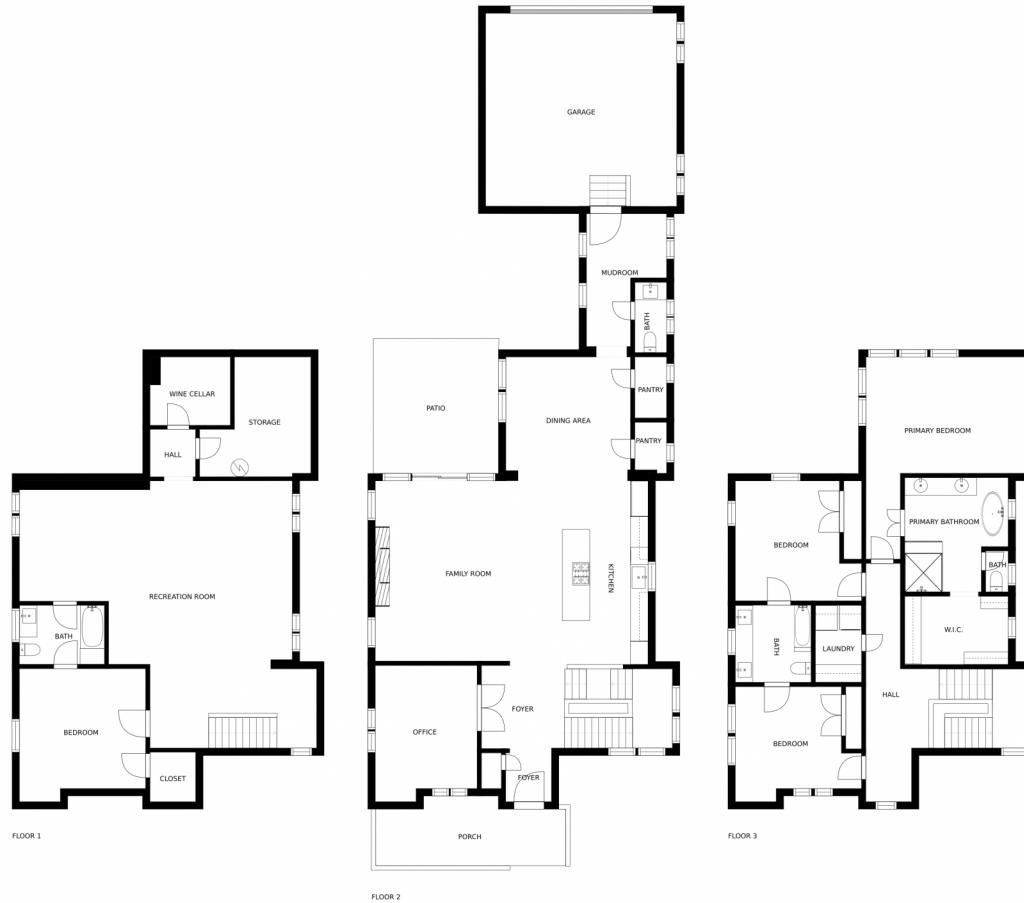


Jay Kalinski
303-489-1050
jaykalinski@gmail.com



Scan code
for more
property
details

1601 S Monroe Street, Denver, CO 80210 – All Floors



SIZES AND DIMENSIONS ARE APPROXIMATE, ACTUAL MAY VARY.

Disclaimer: Sizes and Dimensions are Approximate, Actual May Vary.



Jay Kalinski
303-489-1050
jaykalinski@gmail.com



Scan code
for more
property
details