



 Single Family  3638 SQFT  4 Beds  4/1 Baths  2 Car

## PROPERTY DETAILS

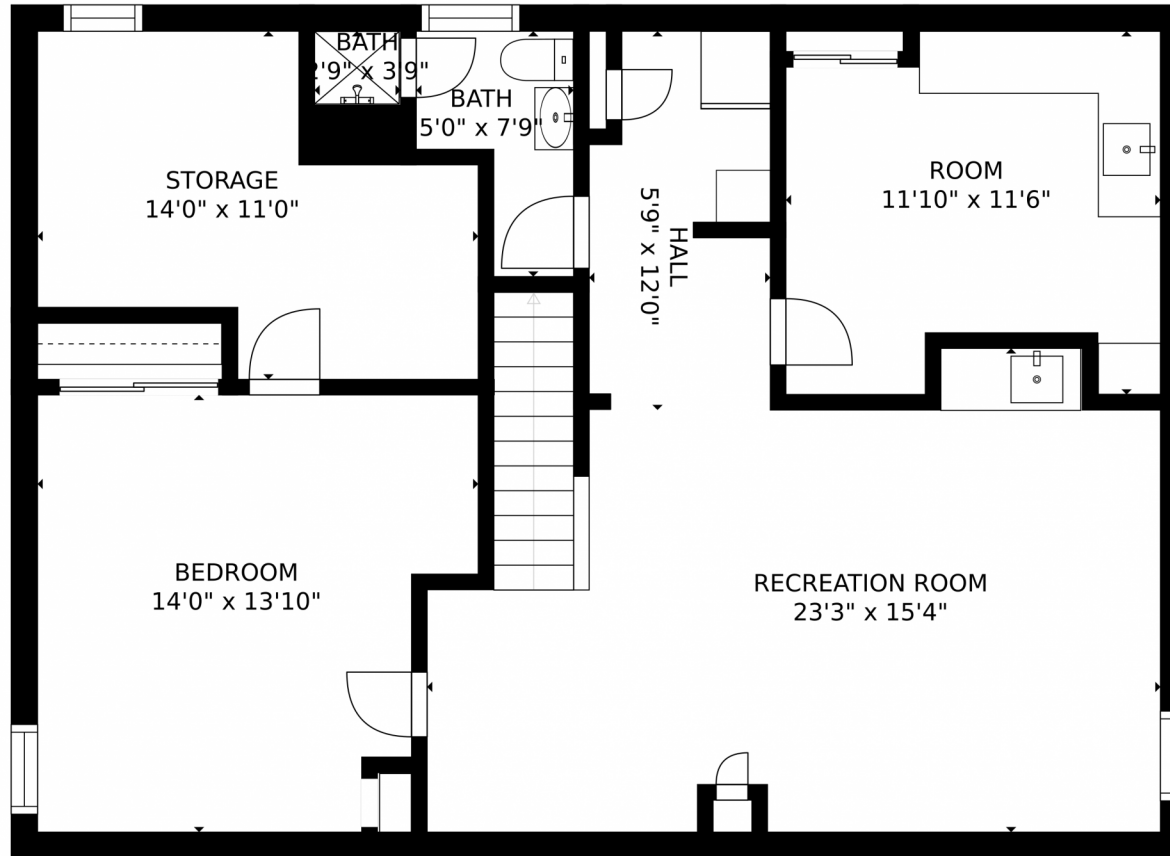
This well loved, bright, beautiful home has plenty of room for the whole family. The remodeled, open kitchen with a connecting side lounging room with the fireplace is the perfect place for entertaining family and friends. The over sized, fenced in back yard with a tree fort brings lots of fun for the kids.



**Renee Ambrose**  
303-704-6289  
reneeambrose@kw.com



3014 East Phillips Drive, Centennial, CO 80122 – Lower Level



GROSS INTERNAL AREA  
FLOOR 1: 903 sq. ft. FLOOR 2: 1271 sq. ft.  
FLOOR 3: 1059 sq. ft. EXCLUDED AREAS:  
PATIO: 527 sq. ft. PORCH: 214 sq. ft.  
GARAGE: 415 sq. ft.  
TOTAL: 3233 sq. ft.  
SIZES AND DIMENSIONS ARE APPROXIMATE, ACTUAL MAY VARY.

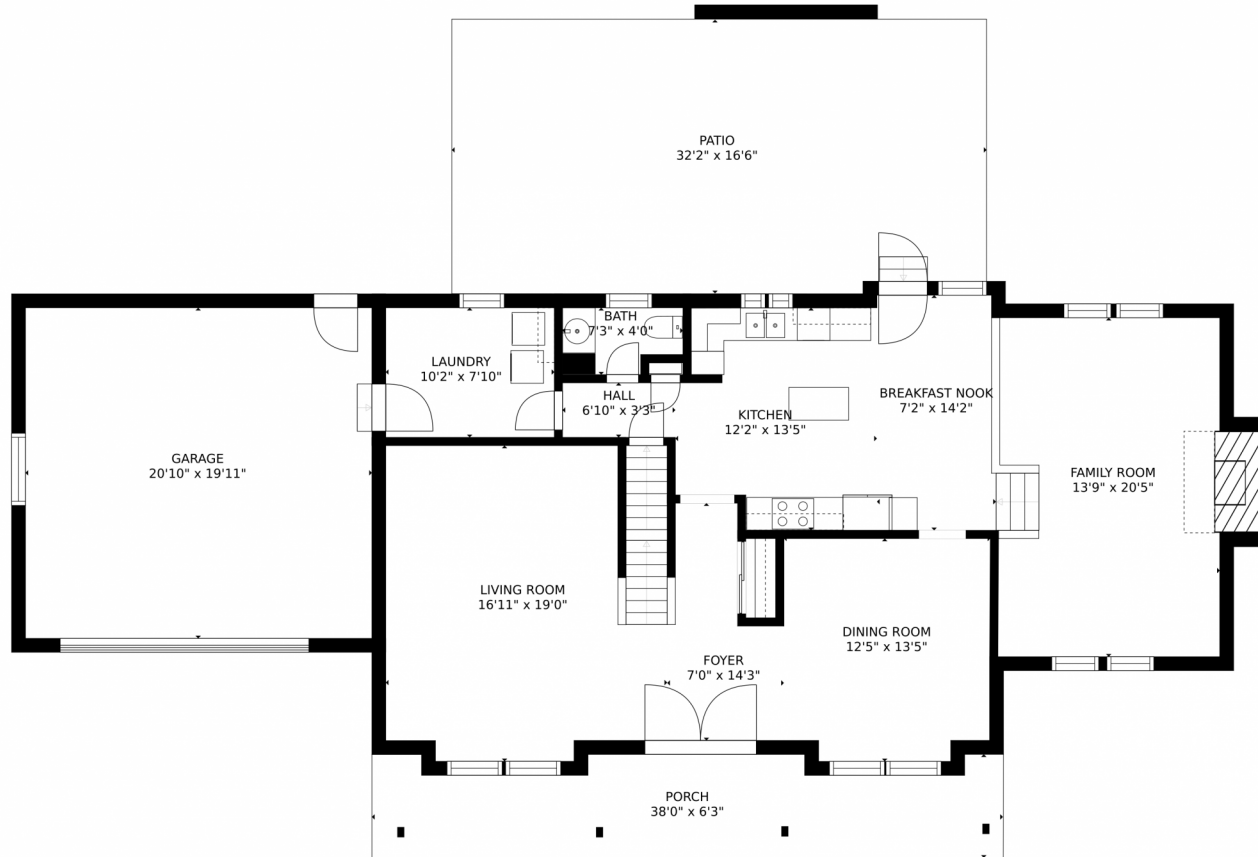
Disclaimer: Sizes and Dimensions are Approximate, Actual May Vary.



**Renee Ambrose**  
303-704-6289  
reneeambrose@kw.com



# 3014 East Phillips Drive, Centennial, CO 80122 – Main Level



GROSS INTERNAL AREA  
FLOOR 1: 903 sq. ft, FLOOR 2: 1271 sq. ft  
FLOOR 3: 1059 sq. ft, EXCLUDED AREAS:  
PATIO: 527 sq. ft, PORCH: 214 sq. ft  
GARAGE: 415 sq. ft  
TOTAL: 3233 sq. ft  
SIZES AND DIMENSIONS ARE APPROXIMATE, ACTUAL MAY VARY.

Disclaimer: Sizes and Dimensions are Approximate, Actual May Vary.

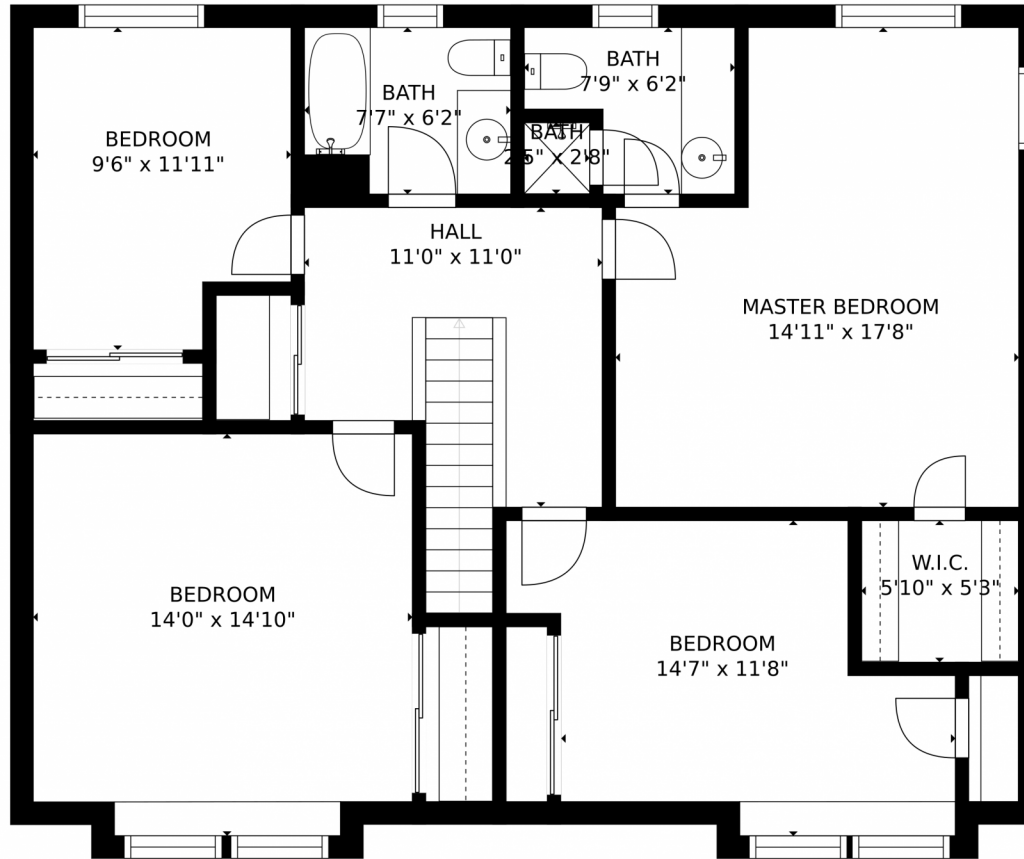


**Renee Ambrose**  
303-704-6289  
reneeambrose@kw.com



Scan code  
for more  
property  
details

3014 East Phillips Drive, Centennial, CO 80122 – 2nd Story



GROSS INTERNAL AREA  
FLOOR 1: 903 sq. ft, FLOOR 2: 1271 sq. ft  
FLOOR 3: 1059 sq. ft, EXCLUDED AREAS:  
PATIO: 527 sq. ft, PORCH: 214 sq. ft  
GARAGE: 415 sq. ft  
TOTAL: 3233 sq. ft  
SIZES AND DIMENSIONS ARE APPROXIMATE, ACTUAL MAY VARY.

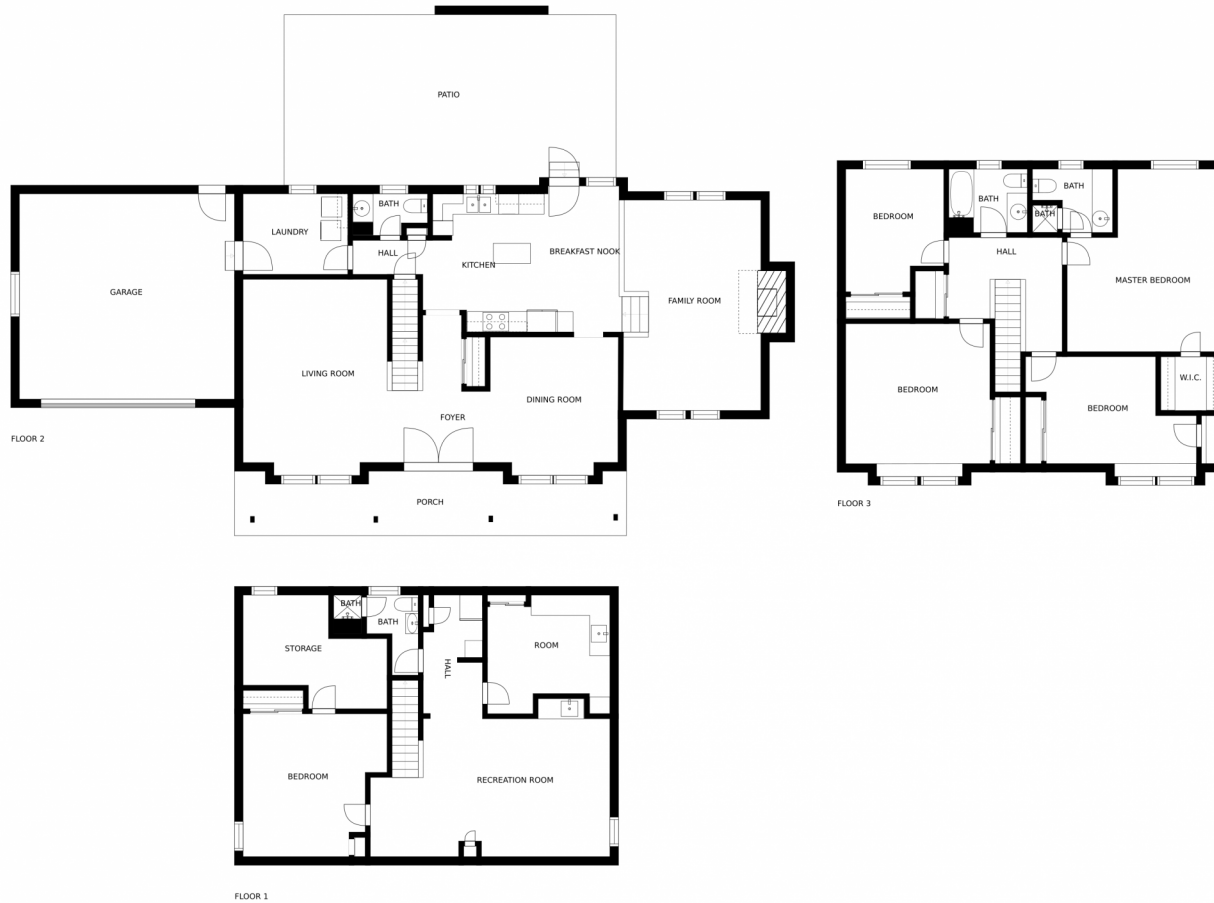
Disclaimer: Sizes and Dimensions are Approximate, Actual May Vary.



Renee Ambrose  
303-704-6289  
reneeambrose@kw.com



# 3014 East Phillips Drive, Centennial, CO 80122 – All Floors



SIZES AND DIMENSIONS ARE APPROXIMATE, ACTUAL MAY VARY.

Disclaimer: Sizes and Dimensions are Approximate, Actual May Vary.



**Renee Ambrose**  
303-704-6289  
reneeambrose@kw.com

